

BUSINESS AVIATION TRAFFIC TRACKER EUROPE

JANUARY 2025



EUROPEAN BUSINESS AVIATION ASSOCIATION



DEPARTURES, ARRIVALS, INTERNALS AND OVERFLIGHTS (DAIO) REPORT

TOTAL BUSINESS AVIATION FLIGHTS



Business Aviation (ECAC Area)

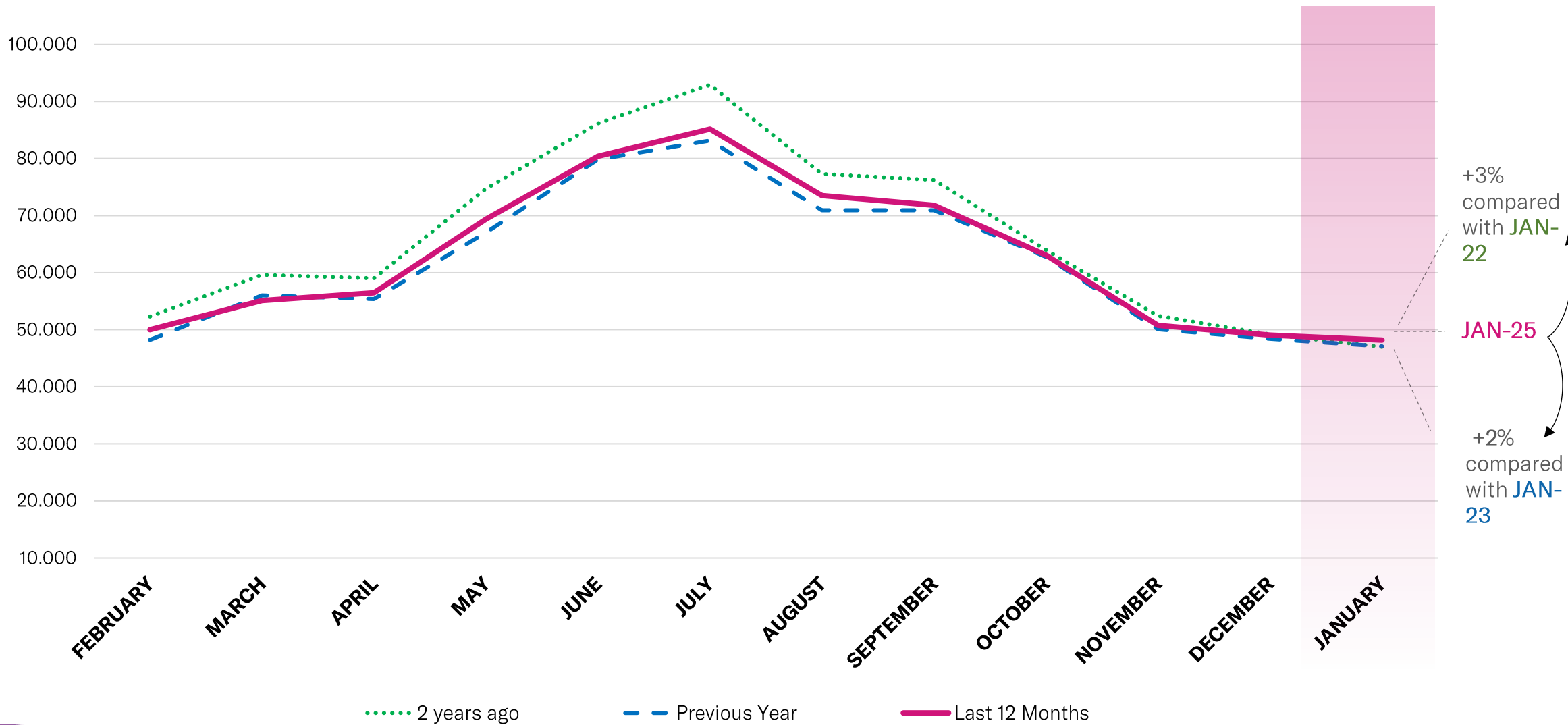
	ARRIVAL			DEPARTURE			INTERNAL			OVERFLIGHT			PREVIOUS YEAR	CURRENT YEAR	GROWTH
	Previous Year	Current Year	Growth	Previous Year	Current Year	Growth	Previous Year	Current Year	Growth	Previous Year	Current Year	Growth			
Feb 2024	2.642	3.025	14,5%	2.578	3.006	16,6%	42.543	43.497	2,2%	379	482	27,2%	48.142	50.010	3,9%
Mar 2024	3.315	3.267	-1,4%	3.257	3.270	0,4%	48.909	48.026	-1,8%	469	541	15,4%	55.950	55.104	-1,5%
Apr 2024	3.232	3.474	7,5%	3.069	3.356	9,4%	48.589	49.083	1,0%	422	553	31,0%	55.312	56.466	2,1%
May 2024	3.610	3.989	10,5%	3.374	3.642	7,9%	59.614	61.167	2,6%	422	581	37,7%	67.020	69.379	3,5%
Jun 2024	4.269	4.407	3,2%	3.922	4.206	7,2%	71.129	71.292	0,2%	333	498	49,5%	79.653	80.403	0,9%
Jul 2024	3.765	4.147	10,1%	3.889	4.142	6,5%	75.177	76.393	1,6%	324	478	47,5%	83.155	85.160	2,4%
Aug 2024	3.486	3.869	11,0%	3.510	4.034	14,9%	63.694	65.185	2,3%	253	433	71,1%	70.943	73.521	3,6%
Sep 2024	3.468	4.026	16,1%	3.416	4.012	17,4%	63.684	63.356	-0,5%	369	425	15,2%	70.937	71.819	1,2%
Oct 2024	3.629	3.776	4,1%	3.744	4.077	8,9%	55.751	54.671	-1,9%	429	526	22,6%	63.553	63.050	-0,8%
Nov 2024	3.072	3.302	7,5%	3.020	3.282	8,7%	43.512	43.605	0,2%	482	547	13,5%	50.086	50.736	1,3%
Dec 2024	2.875	3.202	11,4%	3.023	3.334	10,3%	41.932	41.889	-0,1%	560	614	9,6%	48.390	49.039	1,3%
Jan 2025	3.250	3.416	5,1%	3.041	3.196	5,1%	40.239	40.998	1,9%	556	576	3,6%	47.086	48.186	2,3%
Grand Total	40.613	43.900	8,1%	39.843	43.557	9,3%	654.773	659.162	0,7%	4.998	6.254	25,1%	740.227	752.873	1,7%

DEPARTURES, ARRIVALS, INTERNALS AND OVERFLIGHTS (DAIO) REPORT

TOTAL BUSINESS AVIATION FLIGHTS



EBAA TRAFFIC TRACKER - JANUARY 2025



+3% compared with JAN-22

JAN-25

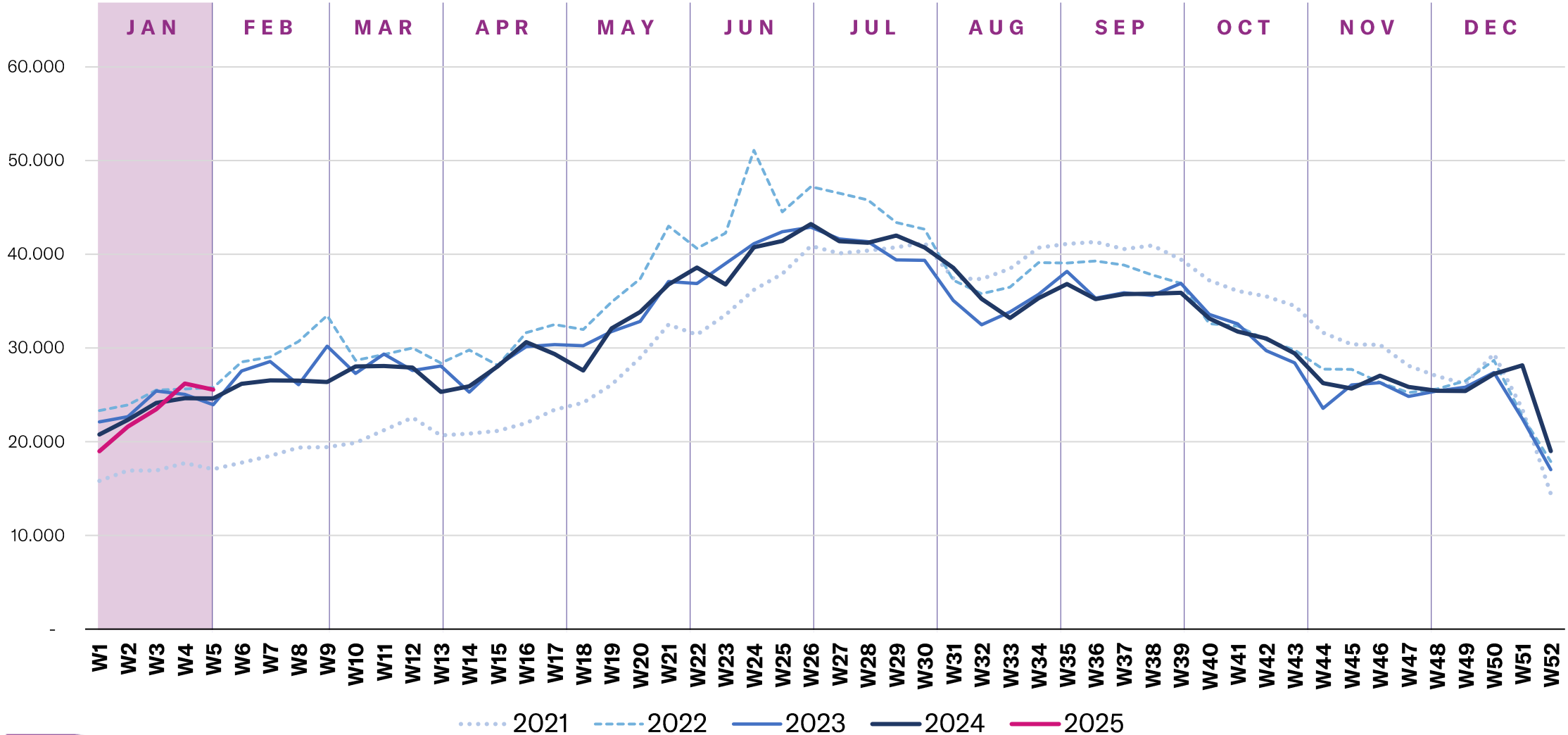
+2% compared with JAN-23

WEEK BY WEEK DETAILS IN EUROPE

BUSINESS AVIATION WEEKLY MOVEMENTS (DEPARTURES + ARRIVALS)



EBAA TRAFFIC TRACKER - JANUARY 2025

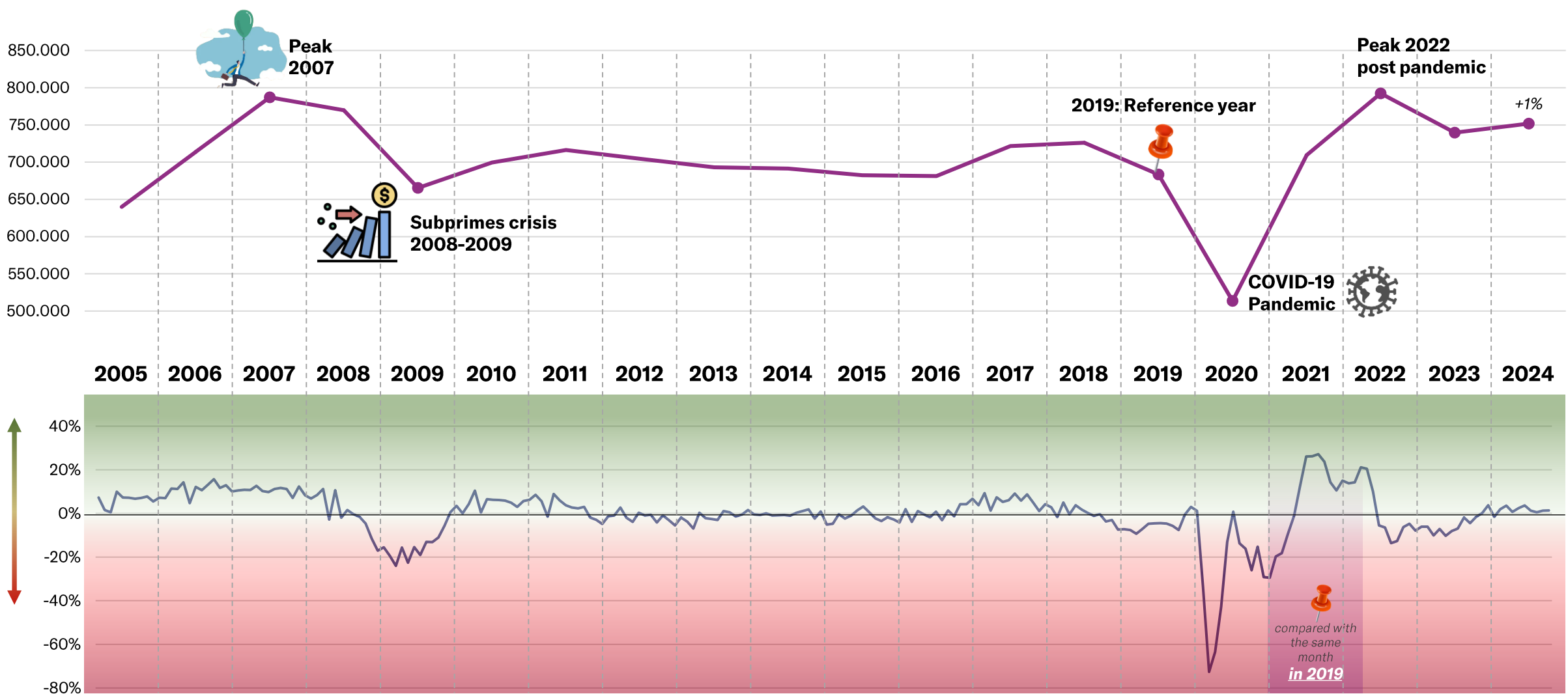


BUSINESS AVIATION IN EUROPE : 2005 – NOW

MONTHLY ACTIVITY AND GROWTH



EBAA TRAFFIC TRACKER - JANUARY 2025



EUROPEAN STATES – STATE OF PLAY

« YEAR-TO-DATE » details in Europe (flights from january onwards)



STATE OF PLAY - YTD (from january onwards)

EBAA TRAFFIC TRACKER - JANUARY 2025

	MONTH CURRENT YEAR	MONTH GROWTH	YTD CURRENT YEAR	YTD GROWTH
FRANCE	15.816	6%	15.816	6%
UNITED KINGDOM	13.907	2%	13.907	2%
GERMANY	11.655	1%	11.655	1%
SWITZERLAND	8.911	0%	8.911	0%
ITALY	7.482	6%	7.482	6%
SPAIN	6.760	1%	6.760	1%
TURKEY	3.443	-1%	3.443	-1%
NORWAY	3.175	4%	3.175	4%
AUSTRIA	3.041	-1%	3.041	-1%
SWEDEN	2.953	1%	2.953	1%
BELGIUM	1.945	8%	1.945	8%
NETHERLANDS	1.696	0%	1.696	0%
POLAND	1.691	22%	1.691	22%
CZECH REPUBLIC	1.242	-10%	1.242	-10%
PORTUGAL	1.225	5%	1.225	5%
GREECE	1.188	-6%	1.188	-6%
ICELAND	1.030	9%	1.030	9%
IRELAND	949	4%	949	4%
DENMARK	942	-5%	942	-5%
FINLAND	939	-8%	939	-8%
ROMANIA	874	-3%	874	-3%
HUNGARY	718	3%	718	3%
CYPRUS	606	14%	606	14%
SERBIA	481	-18%	481	-18%
LUXEMBOURG	458	2%	458	2%
SLOVAKIA	453	-17%	453	-17%
CROATIA	419	6%	419	6%
BULGARIA	405	19%	405	19%
MALTA	381	26%	381	26%
SLOVENIA	266	24%	266	24%
LATVIA	163	8%	163	8%
LITHUANIA	156	-1%	156	-1%
BOSNIA AND HERZEGOVINA	138	30%	138	30%
MONTENEGRO	136	25%	136	25%
ALBANIA	134	29%	134	29%
ESTONIA	117	-31%	117	-31%
MOLDOVA	108	23%	108	23%
MACEDONIA	60	22%	60	22%
UKRAINE				

TOP 10 ACTIVE AIRPORTS – JANUARY 2025

AVERAGE DAILY BUSINESS AVIATION DEPARTURES



EBAA TRAFFIC TRACKER - JANUARY 2025

RANK	ICAO CODE	NAME	MONTH CURRENT YEAR	MONTH GROWTH	YTD CURRENT YEAR	YTD GROWTH
1	LFPB	Paris Le Bourget	61,1	6,6%	61,1	6,6%
2	LSGG	Geneva	40,7	4,2%	40,7	4,2%
3	LSZH	Zurich	34,1	-0,1%	34,1	-0,1%
4	EGLF	Farnborough	29,4	-0,8%	29,4	-0,8%
5	EGGW	London Luton	28,5	7,6%	28,5	7,6%
6	LFMN	Nice	28,3	2,0%	28,3	2,0%
7	LIML	Milan Linate	26,0	15,6%	26,0	15,6%
8	LTBA	Istanbul Ataturk	21,0	3,3%	21,0	3,3%
9	EGKB	London Biggin Hill	20,6	-2,1%	20,6	-2,1%
10	LEMD	Madrid Barajas	17,3	4,3%	17,3	4,3%

TOP 30 AIRPORTS – STATE OF PLAY

« YEAR-TO-DATE » details in Europe (flights from january onwards)

STATE OF PLAY - YTD (from january onwards)

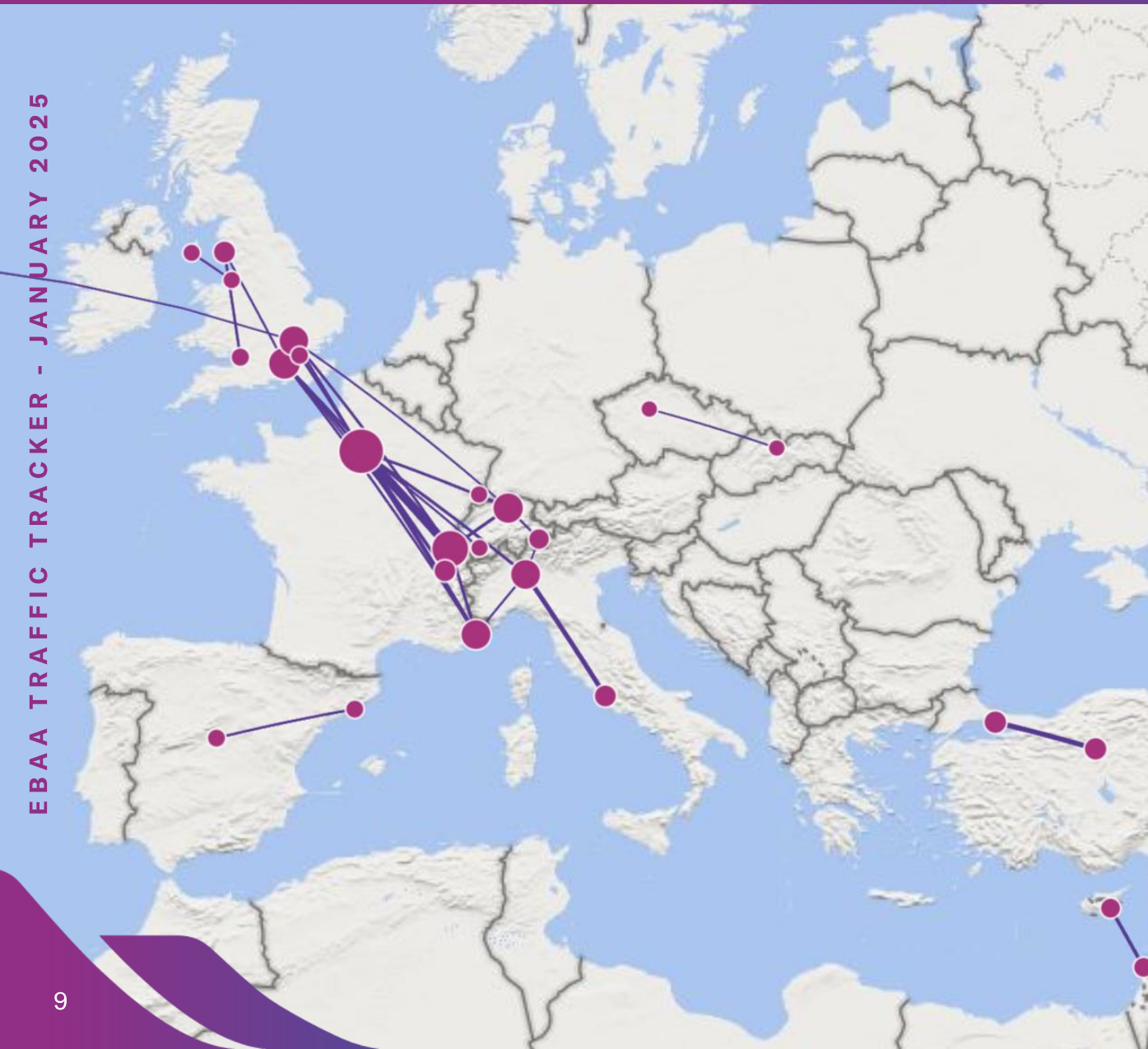
	MONTH CURRENT YEAR	MONTH GROWTH	YTD CURRENT YEAR	YTD GROWTH
🇫🇷 PARIS LE BOURGET	3.971	+7%	3.971	+7%
🇫🇷 GENEVA INTERNATIONAL	2.659	0%	2.659	0%
🇨🇭 ZURICH	2.237	-1%	2.237	-1%
🇬🇧 FARNBOROUGH	1.896	-2%	1.896	-2%
🇬🇧 LONDON LUTON	1.864	+6%	1.864	+6%
🇨🇭 NICE CÔTE D'AZUR	1.830	+4%	1.830	+4%
🇮🇹 MILANO LINATE	1.680	+17%	1.680	+17%
🇬🇧 ISTANBUL ATATÜRK	1.390	6%	1.390	6%
🇹🇷 LONDON BIGGIN HILL	1.316	-3%	1.316	-3%
🇪🇸 MADRID BARAJAS	1.116	+5%	1.116	+5%
🇮🇹 CHAMBERY	1.036	+23%	1.036	+23%
🇪🇸 ROMA CIAMPINO	1.013	-3%	1.013	-3%
🇬🇷 MÜNCHEN	957	+26%	957	+26%
🇷🇺 ENGADIN - ST MORITZ/SAMEDAN	930	+15%	930	+15%
🇪🇸 WIEN SCHWECHAT	923	+4%	923	+4%
🇪🇸 SION	886	+5%	886	+5%
🇩🇪 BARCELONA	867	+34%	867	+34%
🇩🇪 BERLIN SCHÖNEFELD	841	-4%	841	-4%
🇪🇸 PALMA DE MALLORCA	841	+11%	841	+11%
🇪🇸 PRAGUE VACLAV HAVEL	839	-6%	839	-6%
🇳🇱 AMSTERDAM SCHIPHOL	824	-2%	824	-2%
🇫🇷 SALZBURG W. A. MOZART	822	+1%	822	+1%
🇮🇹 MALAGA COSTA DEL SOL	770	-11%	770	-11%
🇬🇧 DUSSELDORF	741	+7%	741	+7%
🇩🇪 LONDON STANSTED	653	-3%	653	-3%
🇩🇪 KÖLN BONN	635	0%	635	0%
🇩🇪 ATHENS INTERNATIONAL	624	-1%	624	-1%
🇦🇹 INNSBRUCK	617	+1%	617	+1%
🇬🇧 RAF NORTHOLT	609	+21%	609	+21%
🇩🇪 ANKARA ESENBOĞA	583	+1%	583	+1%

TOP 30 BUSINESS AVIATION ROUTES – STATE OF PLAY

« YEAR-TO-DATE » details in Europe (flights from january onwards)



EBAA TRAFFIC TRACKER - JANUARY 2025



AIRPORT 1		AIRPORT 2		YTD CURRENT YEAR	YTD GROWTH(*)
🇨🇭 LSGG	Geneva International	🇫🇷 LFPB	Paris Le Bourget	304	-4%
🇹🇷 LTBA	Istanbul Atatürk	🇹🇷 LTAC	Ankara Esenboğa	173	+15%
🇮🇹 LIML	Milano Linate	🇮🇹 LIRA	Roma Ciampino	161	+14%
🇫🇷 LFMN	Nice Côte d'Azur	🇫🇷 LFPB	Paris Le Bourget	139	-4%
🇸🇰 LCLK	Larnaka International	🇮🇱 LLBG	Tel Aviv International	119	-4%
🇨🇭 LSGG	Geneva International	🇨🇭 LSZH	Zurich	108	38%
🇫🇷 LFPB	Paris Le Bourget	🇬🇧 EGLF	Farnborough	104	8%
🇫🇷 LFPB	Paris Le Bourget	🇮🇹 LIML	Milano Linate	102	11%
🇫🇷 LFMN	Nice Côte d'Azur	🇨🇭 LSGG	Geneva International	100	18%
🇫🇷 LFLB	Chambery Savoie	🇫🇷 LFPB	Paris Le Bourget	97	3%
🇫🇷 LFPB	Paris Le Bourget	🇬🇧 EGGW	London Luton	96	-4%
🇫🇷 LFPB	Paris Le Bourget	🇨🇭 LSZH	Zurich	94	8%
🇨🇭 LSGG	Geneva International	🇬🇧 EGGW	London Luton	92	35%
🇬🇧 EGGD	Bristol	🇬🇧 EGNL	Walney Island	89	14%
🇬🇧 EGLF	Farnborough	🇫🇷 LFMN	Nice Côte d'Azur	84	38%
🇪🇸 LEBL	Barcelona	🇪🇸 LEMD	Madrid Barajas	84	20%
🇫🇷 LFPB	Paris Le Bourget	🇬🇧 EGKB	London Biggin Hill	80	-5%
🇬🇧 EGLF	Farnborough	🇨🇭 LSGG	Geneva International	75	-25%
🇬🇧 EGGP	Liverpool International	🇨🇷 EGNS	Ronaldsway	73	7%
🇫🇷 LFSB	Basel-Mulhouse	🇨🇭 LSZH	Zurich	73	-4%
🇨🇭 LSZS	St Moritz - Samedan	🇨🇭 LSZH	Zurich	73	43%
🇫🇷 LFMN	Nice Côte d'Azur	🇮🇹 LIML	Milano Linate	72	33%
🇬🇧 EGNL	Walney Island	🇬🇧 EGLF	Farnborough	72	1%
🇫🇷 LFPB	Paris Le Bourget	🇨🇭 LSGS	Sion	71	6%
🇬🇧 EGGW	London Luton	🇮🇹 EGLF	Farnborough	69	82%
🇬🇧 EGGW	London Luton	🇨🇭 LSZH	Zurich	66	32%
🇬🇧 EGGW	London Luton	🇺🇸 KTEB	Teterboro	62	7%
🇸🇰 LZIB	Bratislava M. R. Stefanika	🇨🇪 LKPR	Prague Vaclav Havel	61	-8%
🇬🇧 EGLF	Farnborough	🇫🇷 LFLB	Chambery Savoie	60	20%
🇮🇹 LIML	Milano Linate	🇨🇭 LSZS	St Moritz - Samedan	59	-2%

TOP 10 FLOWS– JANUARY 2025

AVERAGE DAILY BUSINESS AVIATION FLIGHTS



EBAA TRAFFIC TRACKER - JANUARY 2025

ORIGIN	DESTINATION	MONTH CURRENT YEAR	MONTH GROWTH	YTD CURRENT YEAR	YTD GROWTH
France	France	101,7	6,7%	101,7	6,7%
UK-Continental	UK-Continental	92,0	1,7%	92,0	1,7%
Germany	Germany	76,4	-6,1%	76,4	-6,1%
Norway-Continental	Norway-Continental	43,3	6,9%	43,3	6,9%
Italy	Italy	33,3	0,3%	33,3	0,3%
Sweden	Sweden	33,2	0,8%	33,2	0,8%
Spain-Continental	Spain-Continental	30,9	-13,3%	30,9	-13,3%
France	Switzerland	26,5	1,6%	26,5	1,6%
Switzerland	France	25,8	2,2%	25,8	2,2%
France	UK-Continental	24,6	9,0%	24,6	9,0%

TRAFFIC PER STATE – JANUARY 2025

AVERAGE DAILY BUSINESS AVIATION FLIGHTS – PART 1



EBA A TRAFFIC TRACKER - JANUARY 2025

STATE	MONTH CURRENT YEAR	MONTH PREVIOUS YEAR	MONTH CHANGE	MONTH GROWTH	YTD CURRENT YEAR	YTD PREVIOUS YEAR	YTD CHANGE	YTD GROWTH
NM Area	1.568,8	1.527,8	41,0	2,7%	1.568,8	1.527,8	41,0	2,7%
ECAC	1.554,4	1.518,9	35,5	2,3%	1.554,4	1.518,9	35,5	2,3%
ESRA08	1.523,8	1.488,1	35,7	2,4%	1.523,8	1.488,1	35,7	2,4%
ESRA02	1.517,4	1.482,2	35,1	2,4%	1.517,4	1.482,2	35,1	2,4%
SES-RP2	1.482,4	1.444,5	37,8	2,6%	1.482,4	1.444,5	37,8	2,6%
SES-RP3	1.403,0	1.368,1	35,0	2,6%	1.403,0	1.368,1	35,0	2,6%
EU27	1.353,1	1.320,5	32,6	2,5%	1.353,1	1.320,5	32,6	2,5%
FABEC	1.003,1	979,4	23,7	2,4%	1.003,1	979,4	23,7	2,4%
France	615,5	594,8	20,7	3,5%	615,5	594,8	20,7	3,5%
Germany	427,3	424,0	3,3	0,8%	427,3	424,0	3,3	0,8%
UK-Ireland FAB	375,6	367,5	8,1	2,2%	375,6	367,5	8,1	2,2%
UK-Continental	369,5	361,0	8,5	2,4%	369,5	361,0	8,5	2,4%
Switzerland	346,8	341,5	5,2	1,5%	346,8	341,5	5,2	1,5%
BLUE MED FAB	351,8	328,3	23,5	7,2%	351,8	328,3	23,5	7,2%
FAB CE	294,7	288,3	6,5	2,2%	294,7	288,3	6,5	2,2%
Italy	290,8	274,7	16,1	5,8%	290,8	274,7	16,1	5,8%
South West FAB	214,5	211,4	3,2	1,5%	214,5	211,4	3,2	1,5%
Spain	209,3	206,7	2,5	1,2%	209,3	206,7	2,5	1,2%
Spain-Continental	198,5	197,6	0,8	0,4%	198,5	197,6	0,8	0,4%
Austria	193,5	190,0	3,5	1,8%	193,5	190,0	3,5	1,8%
Belgium/Luxembourg	171,5	167,8	3,7	2,2%	171,5	167,8	3,7	2,2%
Türkiye	119,0	119,4	-0,4	-0,3%	119,0	119,4	-0,4	-0,3%

TRAFFIC PER STATE – JANUARY 2025

AVERAGE DAILY BUSINESS AVIATION FLIGHTS – PART 2



EBA A TRAFFIC TRACKER - JANUARY 2025

STATE	MONTH CURRENT YEAR	MONTH PREVIOUS YEAR	MONTH CHANGE	MONTH GROWTH	YTD CURRENT YEAR	YTD PREVIOUS YEAR	YTD CHANGE	YTD GROWTH
Netherlands	114,0	113,0	1,1	0,9%	114,0	113,0	1,1	0,9%
DK-SE FAB	102,9	101,8	1,1	1,1%	102,9	101,8	1,1	1,1%
Danube FAB	80,0	83,0	-3,1	-3,7%	80,0	83,0	-3,1	-3,7%
NEFAB	83,3	81,3	1,9	2,4%	83,3	81,3	1,9	2,4%
Czech Republic	82,3	80,6	1,6	2,0%	82,3	80,6	1,6	2,0%
Sweden	79,0	77,5	1,5	2,0%	79,0	77,5	1,5	2,0%
Serbia/Montenegro	80,5	75,8	4,7	6,2%	80,5	75,8	4,7	6,2%
Greece	87,3	75,3	12,0	15,9%	87,3	75,3	12,0	15,9%
Croatia	79,8	73,5	6,3	8,6%	79,8	73,5	6,3	8,6%
Hungary	68,1	68,6	-0,5	-0,7%	68,1	68,6	-0,5	-0,7%
Ireland	71,9	67,1	4,8	7,2%	71,9	67,1	4,8	7,2%
Bulgaria	62,5	64,9	-2,4	-3,7%	62,5	64,9	-2,4	-3,7%
Norway-Continental	62,5	59,3	3,2	5,3%	62,5	59,3	3,2	5,3%
Portugal	60,5	53,6	6,9	12,9%	60,5	53,6	6,9	12,9%
Romania	50,6	51,2	-0,5	-1,1%	50,6	51,2	-0,5	-1,1%
Baltic FAB	53,4	49,8	3,6	7,3%	53,4	49,8	3,6	7,3%
Denmark	48,7	48,2	0,5	1,1%	48,7	48,2	0,5	1,1%
Poland	52,3	48,0	4,3	8,9%	52,3	48,0	4,3	8,9%
Slovenia	47,0	44,5	2,5	5,5%	47,0	44,5	2,5	5,5%
Portugal-Continental	45,5	40,2	5,3	13,2%	45,5	40,2	5,3	13,2%
Bosnia and Herzegovina	43,6	39,8	3,7	9,4%	43,6	39,8	3,7	9,4%
Morocco	44,7	39,3	5,5	13,9%	44,7	39,3	5,5	13,9%

TRAFFIC PER STATE – JANUARY 2025

AVERAGE DAILY BUSINESS AVIATION FLIGHTS – PART 3



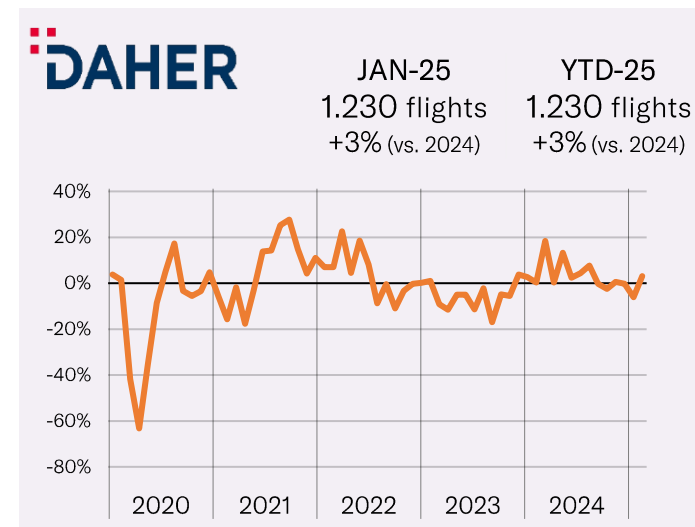
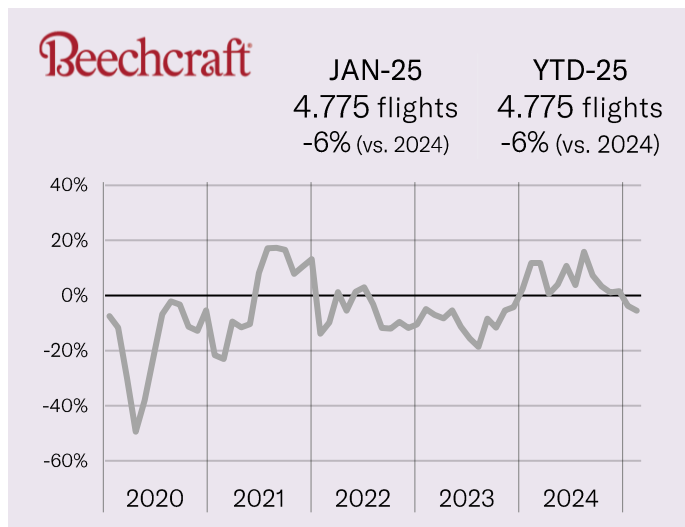
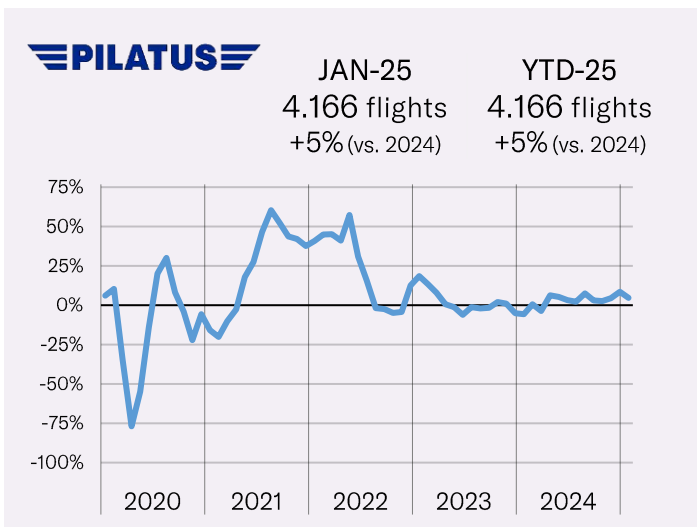
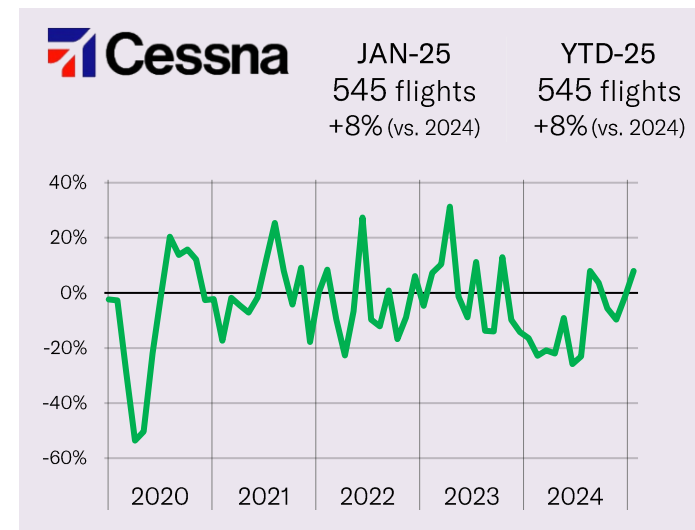
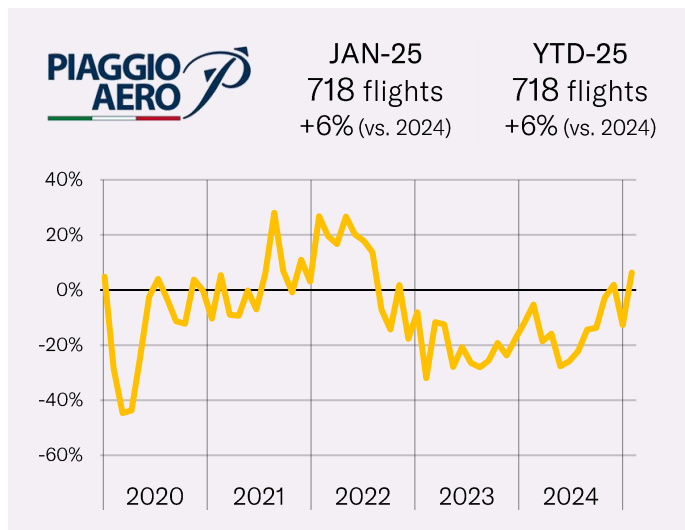
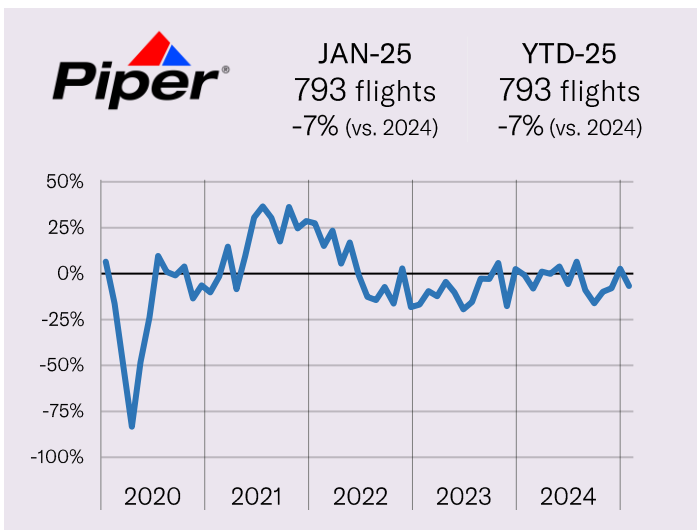
EBA A TRAFFIC TRACKER - JANUARY 2025

STATE	MONTH CURRENT YEAR	MONTH PREVIOUS YEAR	MONTH CHANGE	MONTH GROWTH	YTD CURRENT YEAR	YTD PREVIOUS YEAR	YTD CHANGE	YTD GROWTH
Slovakia	37,4	39,1	-1,8	-4,5%	37,4	39,1	-1,8	-4,5%
Cyprus	40,1	36,5	3,6	9,9%	40,1	36,5	3,6	9,9%
Egypt	43,8	36,1	7,7	21,3%	43,8	36,1	7,7	21,3%
Iceland	30,3	29,8	0,5	1,6%	30,3	29,8	0,5	1,6%
Albania	29,7	21,6	8,1	37,3%	29,7	21,6	8,1	37,3%
Spain-Canaries	24,5	21,6	2,9	13,4%	24,5	21,6	2,9	13,4%
Portugal-SantaMaria	21,5	20,1	1,4	7,1%	21,5	20,2	1,4	6,7%
Azerbaijan	21,3	19,9	1,4	7,0%	21,3	19,9	1,4	7,0%
Malta	20,6	18,2	2,5	13,5%	20,6	18,2	2,5	13,5%
Finland	17,3	17,7	-0,5	-2,6%	17,3	17,7	-0,5	-2,6%
Israel	20,9	17,4	3,5	20,4%	20,9	17,4	3,5	20,4%
North Macedonia	22,3	15,9	6,3	39,7%	22,3	15,9	6,3	39,7%
Georgia	16,2	14,6	1,6	10,8%	16,2	14,6	1,5	10,6%
Latvia	9,1	9,7	-0,6	-6,3%	9,1	9,7	-0,6	-6,3%
Lithuania	8,1	9,2	-1,1	-11,9%	8,1	9,2	-1,1	-11,9%
Tunisia	8,6	8,2	0,4	4,7%	8,6	8,2	0,4	4,7%
Estonia	6,6	7,7	-1,1	-13,9%	6,6	7,7	-1,1	-13,9%
Libya	5,4	4,6	0,7	15,3%	5,4	4,6	0,7	15,3%
Moldova	3,0	2,8	0,2	5,7%	3,0	2,8	0,2	5,7%
Armenia	5,3	2,7	2,6	96,4%	5,3	2,7	2,6	96,4%
Belarus	0,7	0,7	-0,1	-8,7%	0,7	0,7	-0,1	-8,7%
Ukraine	0,0	0,2	-0,2	-83,3%	0,0	0,2	-0,2	-83,3%

TURBOPROPS OEMS – JANUARY 2025

MONTHLY TRAFFIC & MONTHLY GROWTH

EBAA TRAFFIC TRACKER - JANUARY 2025

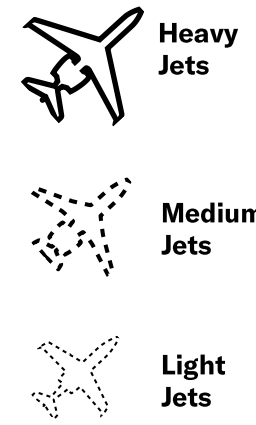
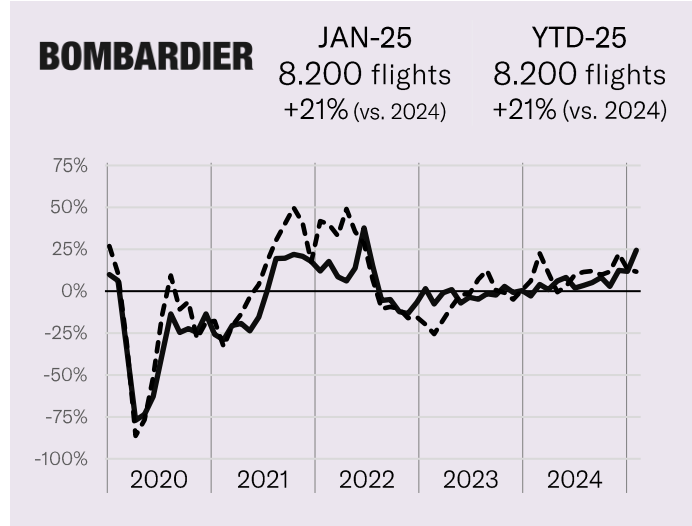
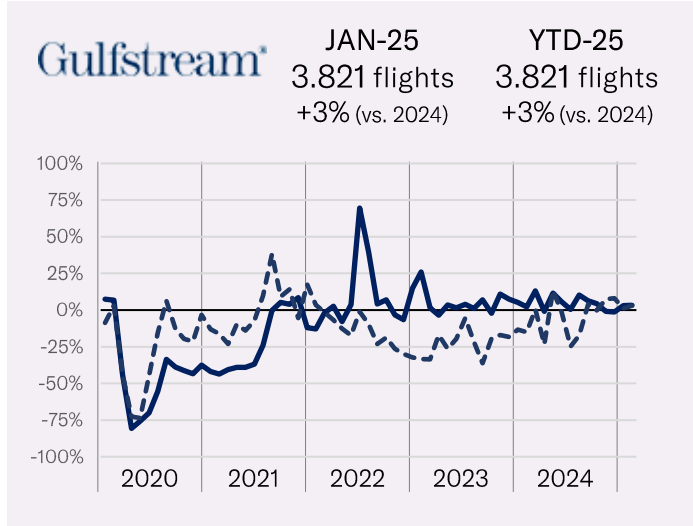
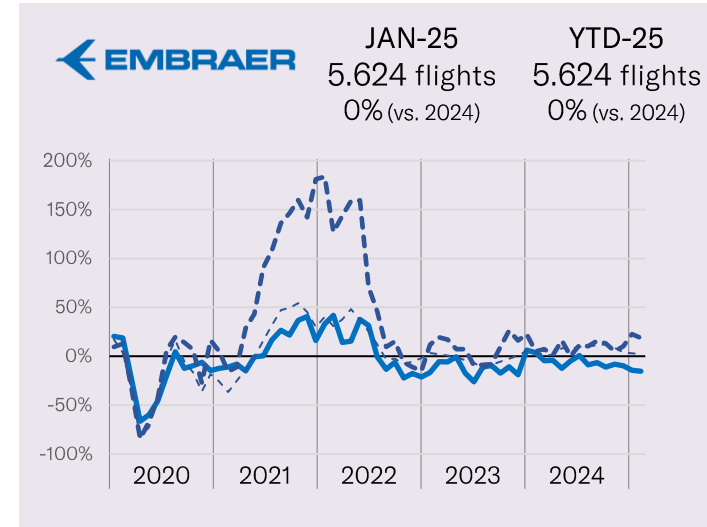
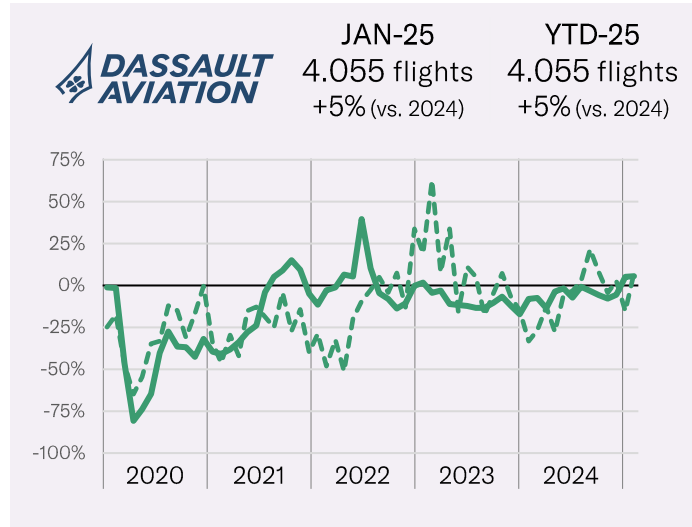
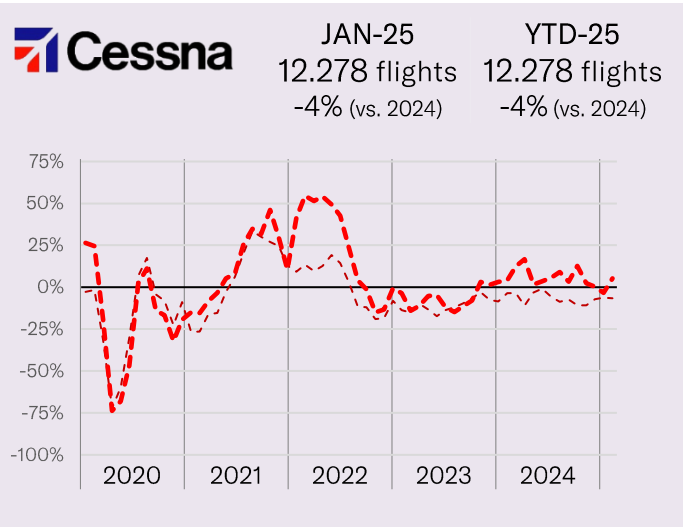


JET OEMS (1/2) – JANUARY 2025

MONTHLY TRAFFIC & MONTHLY GROWTH



EBAA TRAFFIC TRACKER - JANUARY 2025

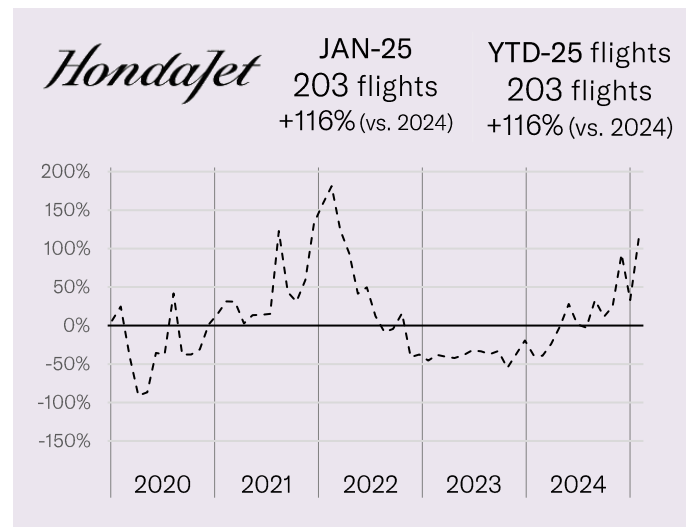
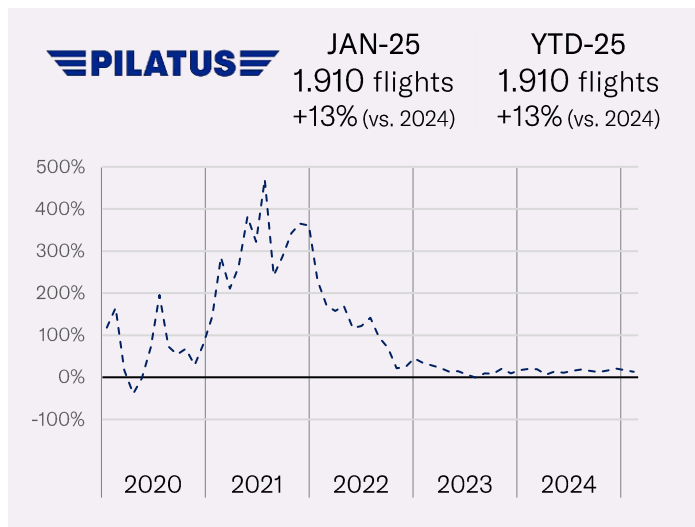
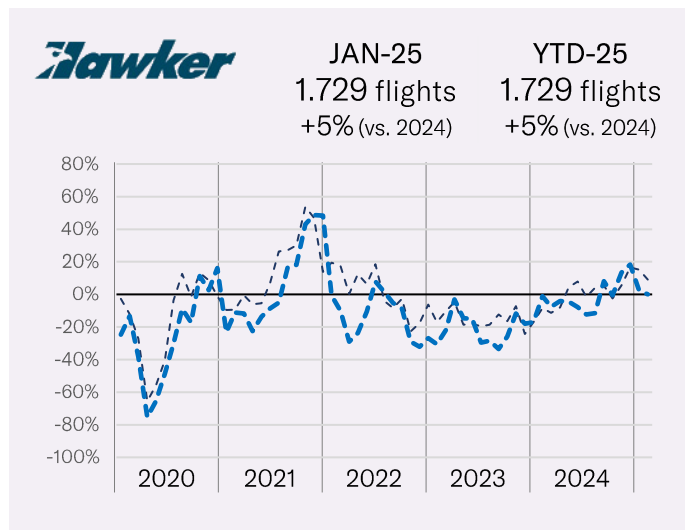
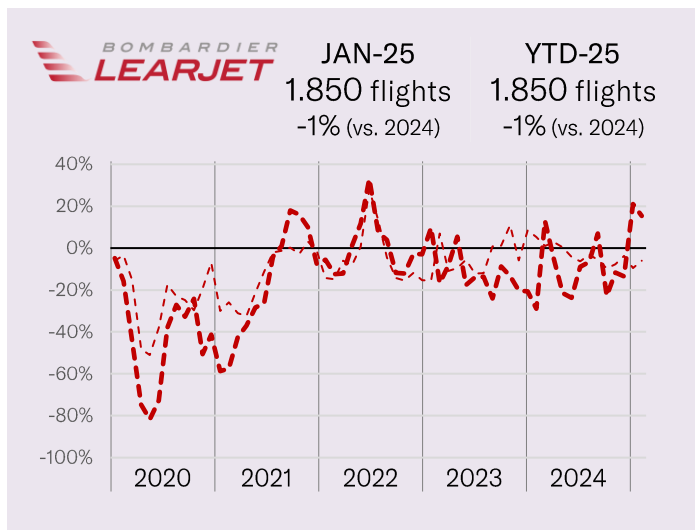


JET OEMS (2/2) – JANUARY 2025

MONTHLY TRAFFIC & MONTHLY GROWTH



EBAA TRAFFIC TRACKER - JANUARY 2025



**Heavy
Jets**



**Medium
Jets**



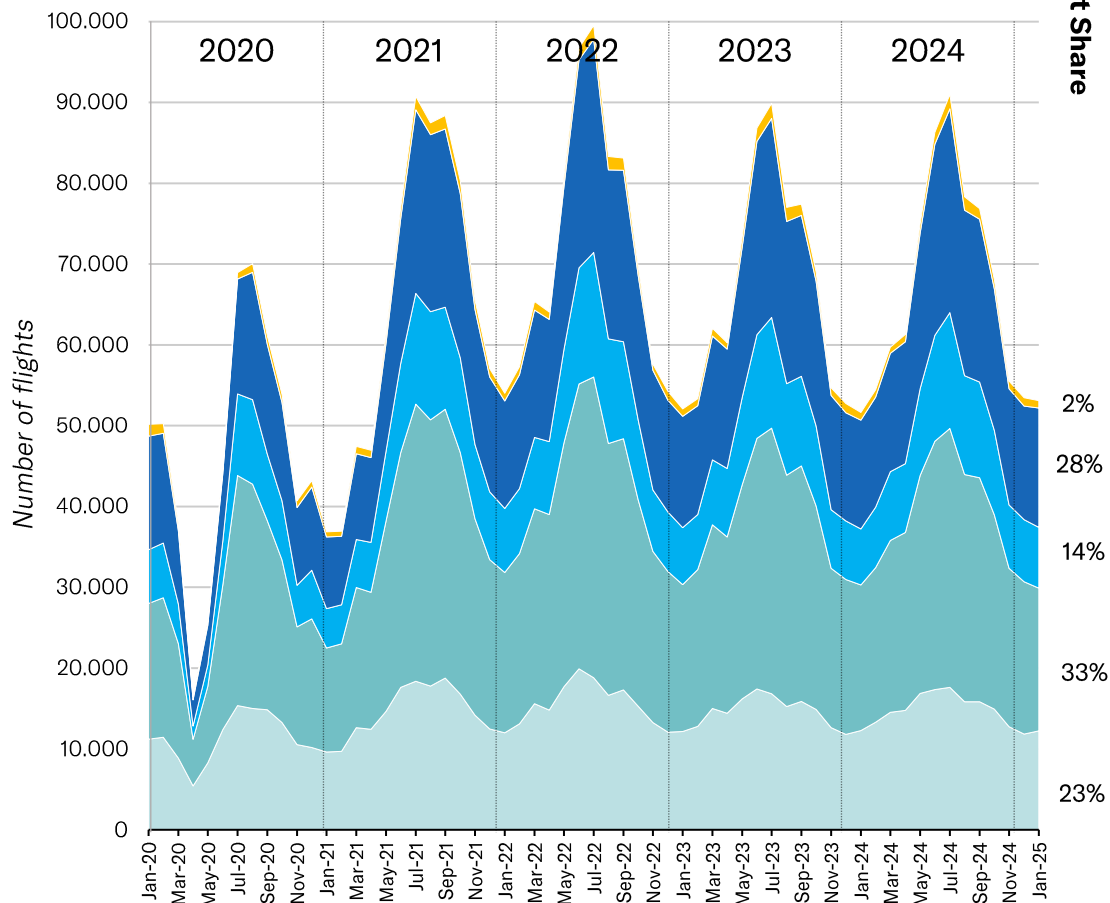
**Light
Jets**

BUSINESS AVIATION AIRPLANES – JANUARY 2025

MONTHLY TRAFFIC & MONTHLY GROWTH

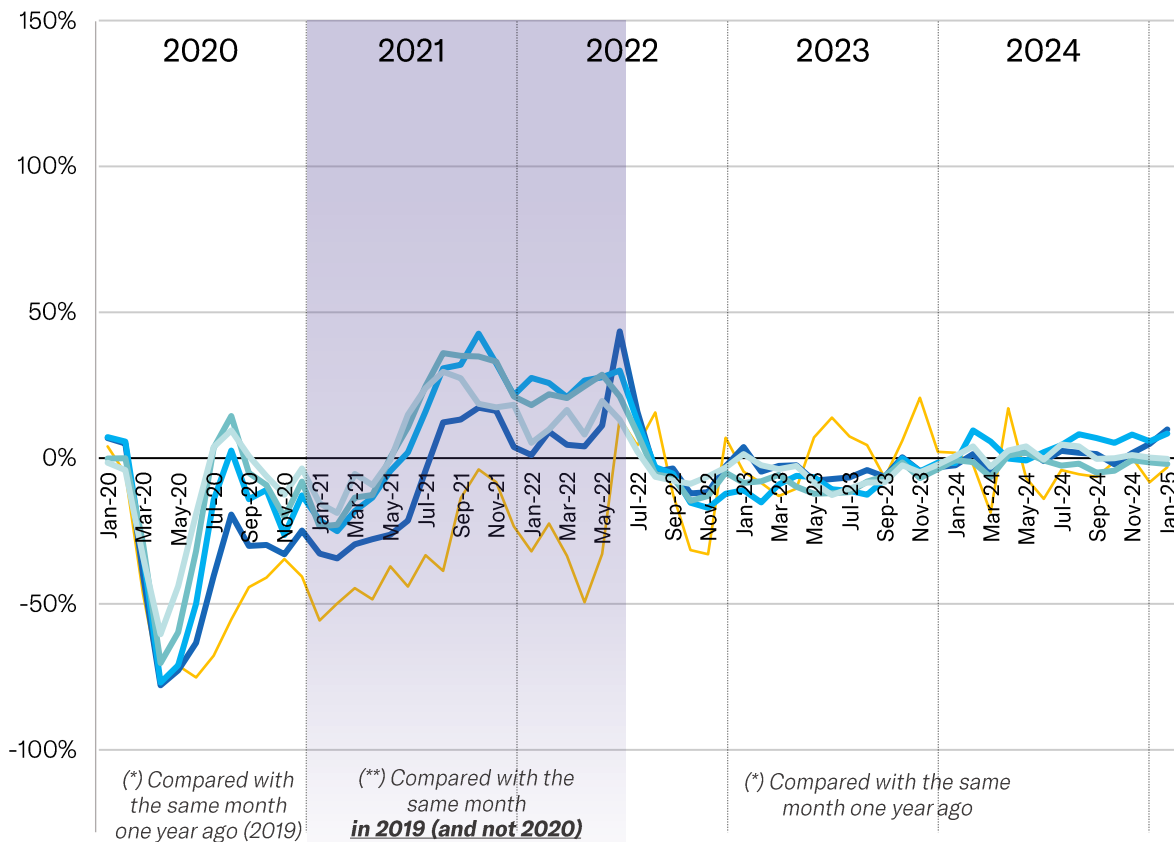
EBAA TRAFFIC TRACKER - JANUARY 2025

Activity per aircraft segment



Market Share

Monthly Growth - compared with */**



TOP 30 ACTIVE AIRCRAFT MODELS – JANUARY 2025

YTD ACTIVITY (FLIGHTS SINCE JAN-1st) & TRAFFIC TYPE



EBA A TRAFFIC TRACKER - JANUARY 2025

				YTD CURRENT YEAR	VS. YTD LAST YEAR
	PC12	Pilatus PC-12	Turboprop	4.166	+5%
	BE20	King Air 200	Turboprop	3.781	-4%
	C56X	Cessna Citation Excel / XLS	Light Jet	3.251	-7%
	E55P	Embraer Phenom 300	Light Jet	2.957	+12%
	GLEX	Global Express / 6000	Heavy Jet	2.376	+20%
	CL60	Challenger 600 series	Heavy Jet	1.926	+36%
	PC24	Pilatus PC24	Light Jet	1.910	+13%
	C68A	Cessna Citation Latitude	Midsize Jet	1.756	+10%
	CL35	Challenger 350	Midsize Jet	1.491	+14%
	F2TH	Dassault Falcon 2000	Heavy Jet	1.445	-4%
	C25A	Cessna Citation CJ2	Light Jet	1.382	-3%
	E35L	Embraer Legacy 600 series	Heavy Jet	1.256	-12%
	C510	Cessna Citation Mustang	Light Jet	1.175	-7%
	GLF6	Gulfstream G600/650	Heavy Jet	1.142	0%
	GLF5	Gulfstream G500/550	Heavy Jet	1.061	-7%

				YTD CURRENT YEAR	VS. YTD LAST YEAR
	FA7X	Dassault Falcon 7X	Heavy Jet	982	+2%
	E550	Embraer Legacy 500	Midsize Jet	977	+17%
	LJ45	Learjet 45	Light Jet	896	-1%
	C525	Cessna Citation CJ1	Light Jet	847	-18%
	GL7T	Global 7000/7500	Heavy Jet	773	+23%
	B350	King Air 350	Turboprop	727	0%
	GL5T	Global 5000	Heavy Jet	722	+19%
	P180	Piaggio P180 Avanti	Turboprop	718	+6%
	C25B	Cessna Citation CJ3	Light Jet	710	+2%
	H25B	Hawker 700-900	Midsize Jet	710	+2%
	F900	Dassault Falcon 900	Heavy Jet	685	+17%
	GLF4	Gulfstream G300/450	Heavy Jet	627	+8%
	BE40	Hawker Beechjet 400	Light Jet	612	+23%
	C25C	Cessna Citation CJ4	Light Jet	580	-10%
	CRJ2	Challenger 800-850	Heavy Jet	562	+20%



Commercial



Non-commercial



State/Diplomatic



Medical/Special

This report is made possible thanks to
EUROCONTROL and WINGX ADVANCE -
www.ebaa.org

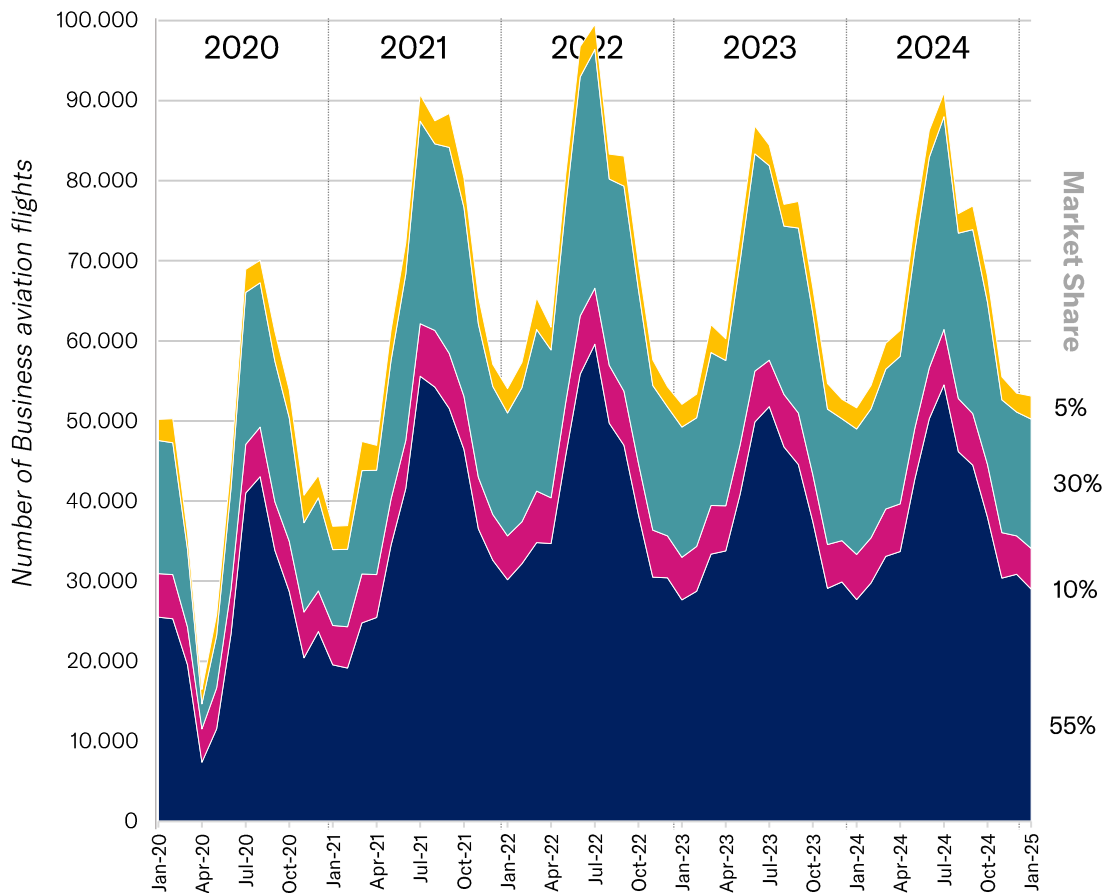
BUSINESS AVIATION MISSIONS – JANUARY 2025

MONTHLY TRAFFIC & MONTHLY GROWTH



EBAA TRAFFIC TRACKER - JANUARY 2025

Activity in per mission type



Commercial



Non-commercial

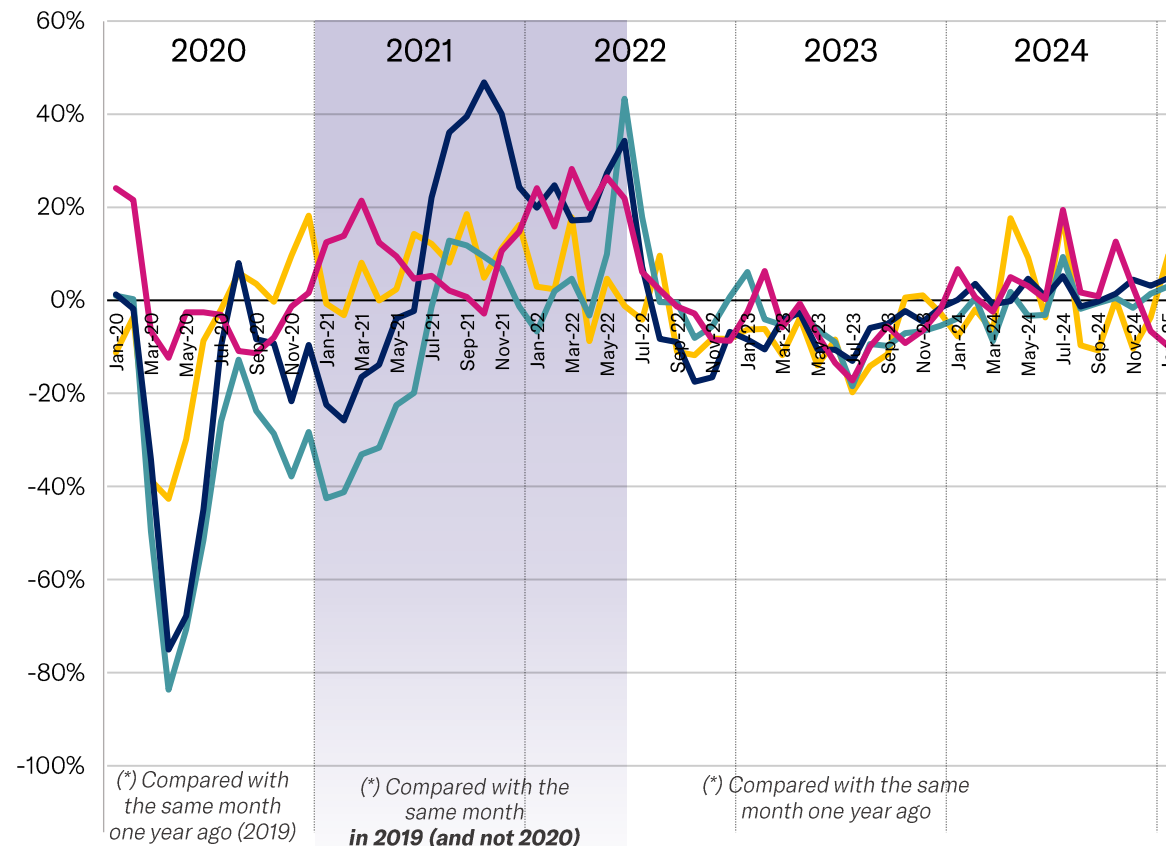


State/Diplomatic



Medical/Special

Monthly Growth - compared with */**



(*) Compared with the same month one year ago (2019)

(*) Compared with the same month in 2019 (and not 2020)

(*) Compared with the same month one year ago

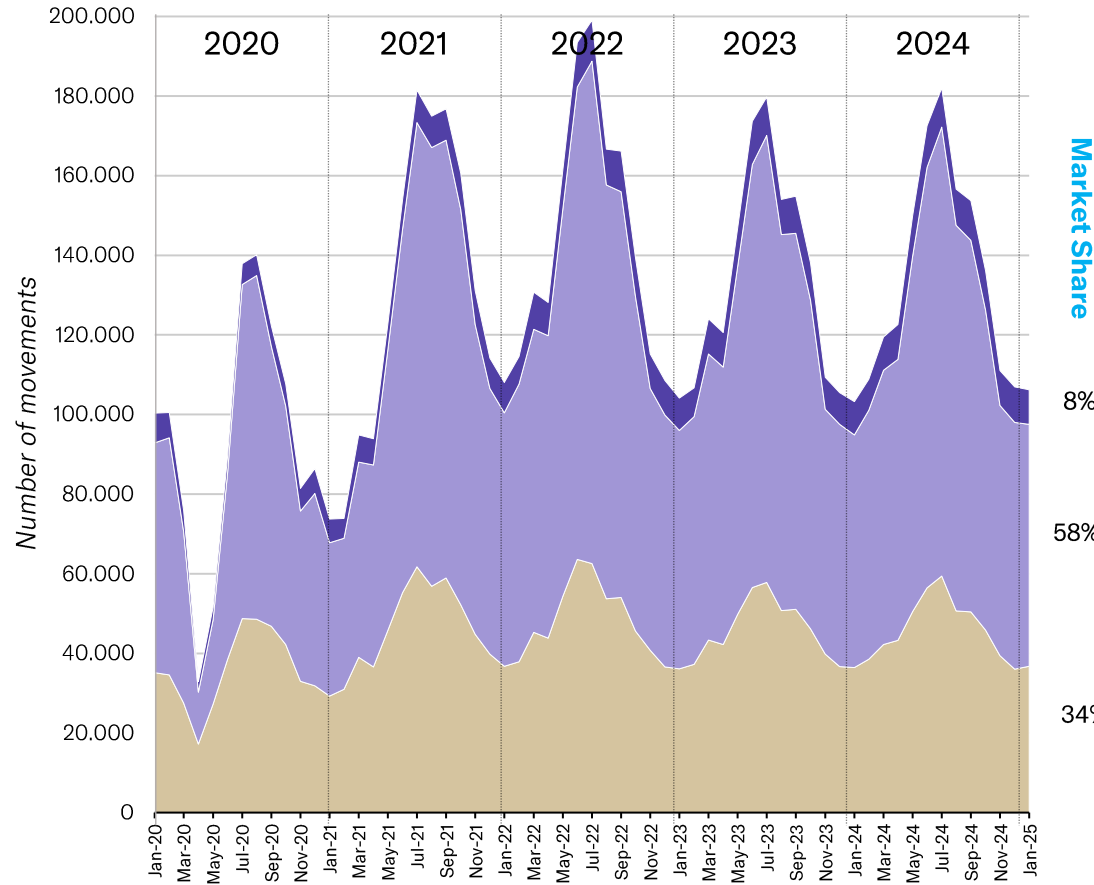
BUSINESS AVIATION ORIGINS & DESTINATIONS – JANUARY 2025

MONTHLY TRAFFIC & MONTHLY GROWTH

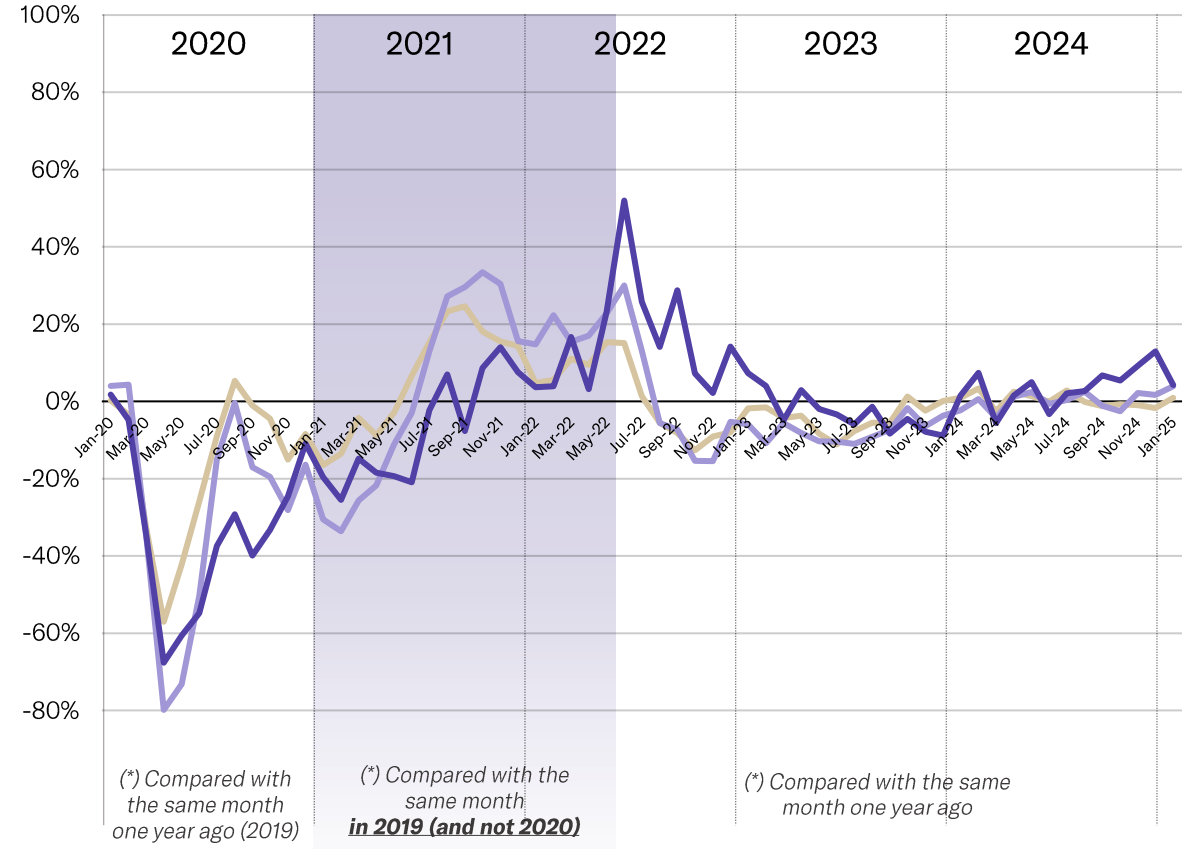


EBAA TRAFFIC TRACKER - JANUARY 2025

Activity per Origin-Destination



Monthly Growth - compared with */**



(*) Compared with the same month one year ago (2019)

(*) Compared with the same month in 2019 (and not 2020)

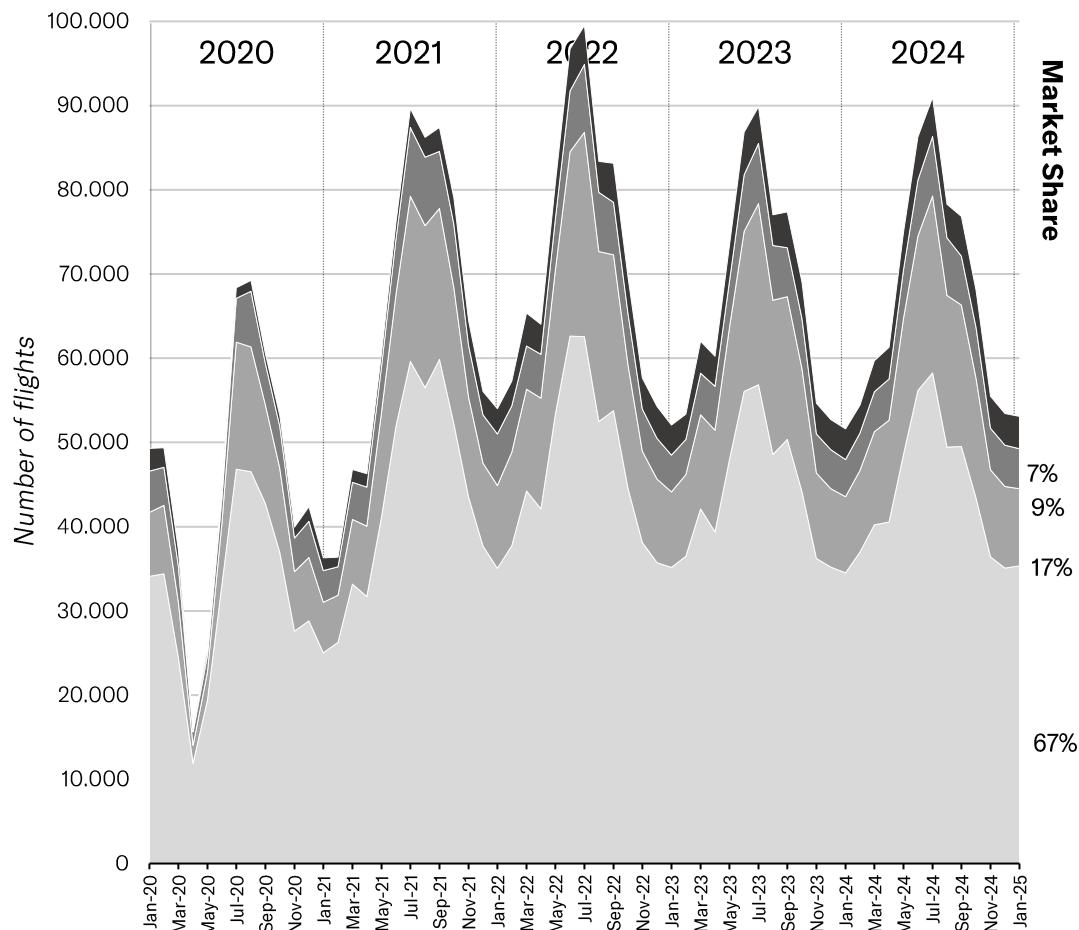
(*) Compared with the same month one year ago

BUSINESS AVIATION FLIGHT SECTOR – JANUARY 2025

MONTHLY TRAFFIC & MONTHLY GROWTH



Activity per flight sector



Short Haul
(below 500nm / 1000km)



Short Haul
(below 1000nm / 2000km)

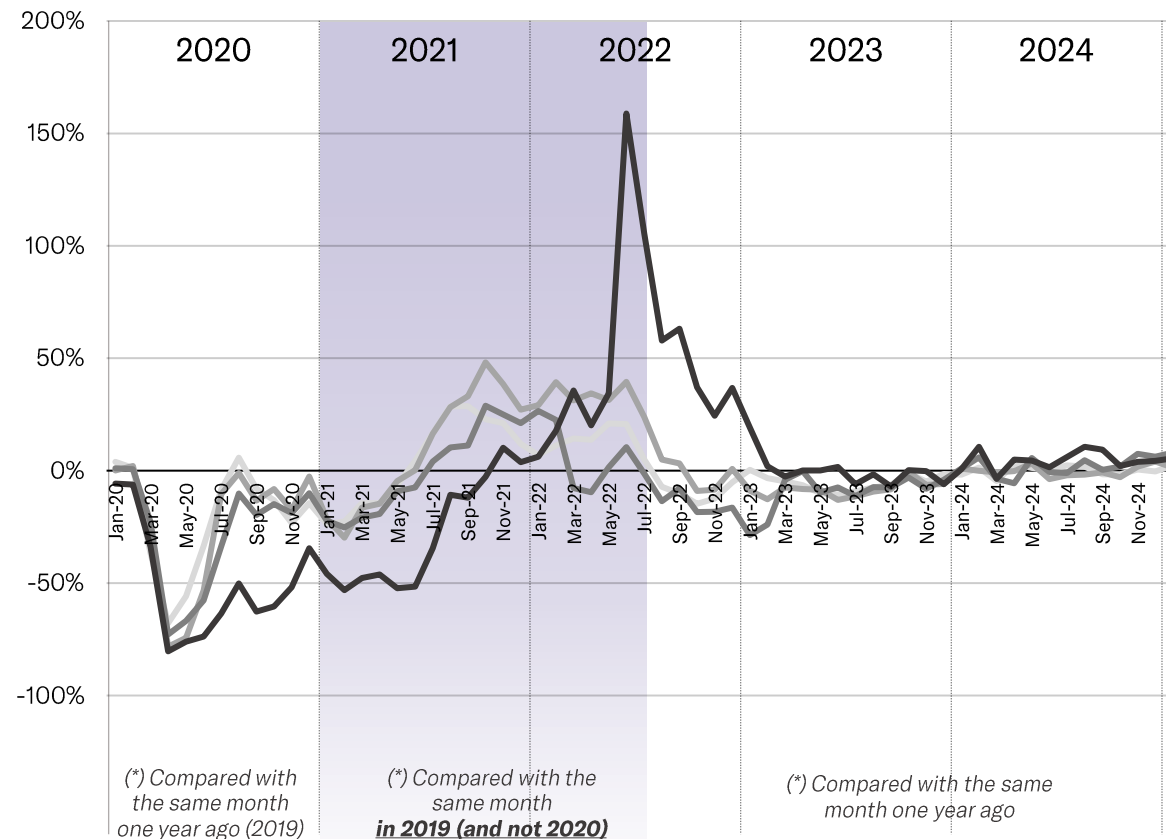


Medium Haul
(below 2500nm / 4700km)



Long Haul
(above 2500nm / 4700km)

Monthly Growth - compared with */**



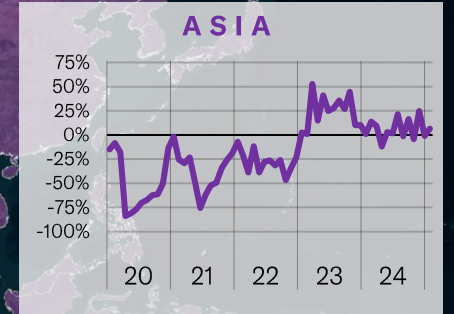
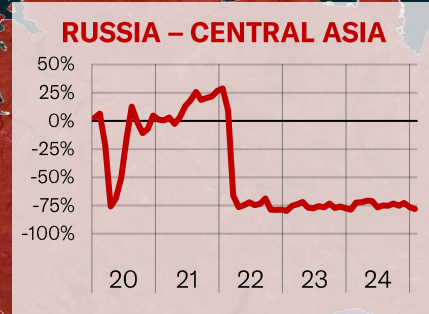
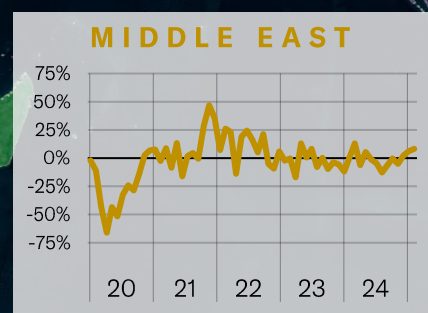
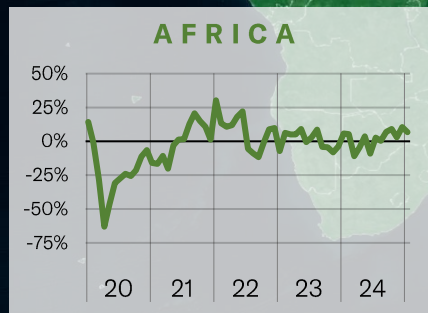
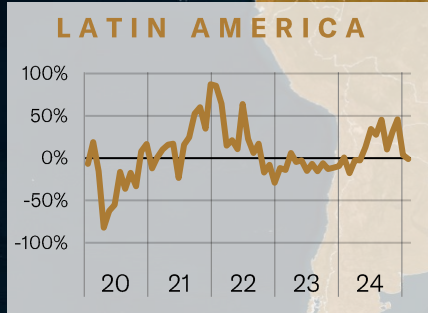
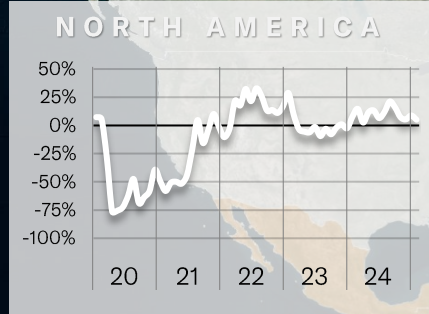
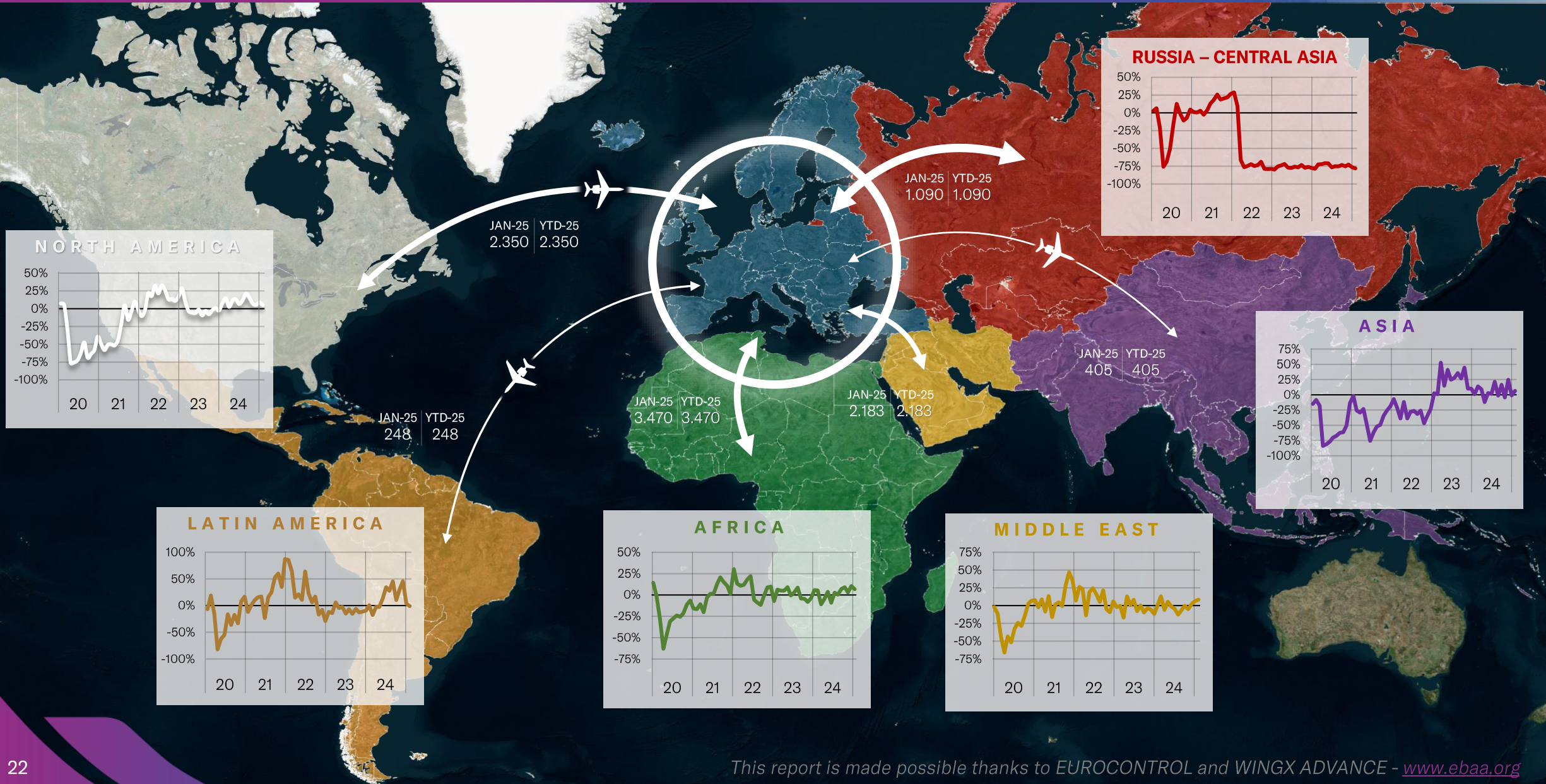
(*) Compared with the same month one year ago (2019)

(*) Compared with the same month in 2019 (and not 2020)

(*) Compared with the same month one year ago

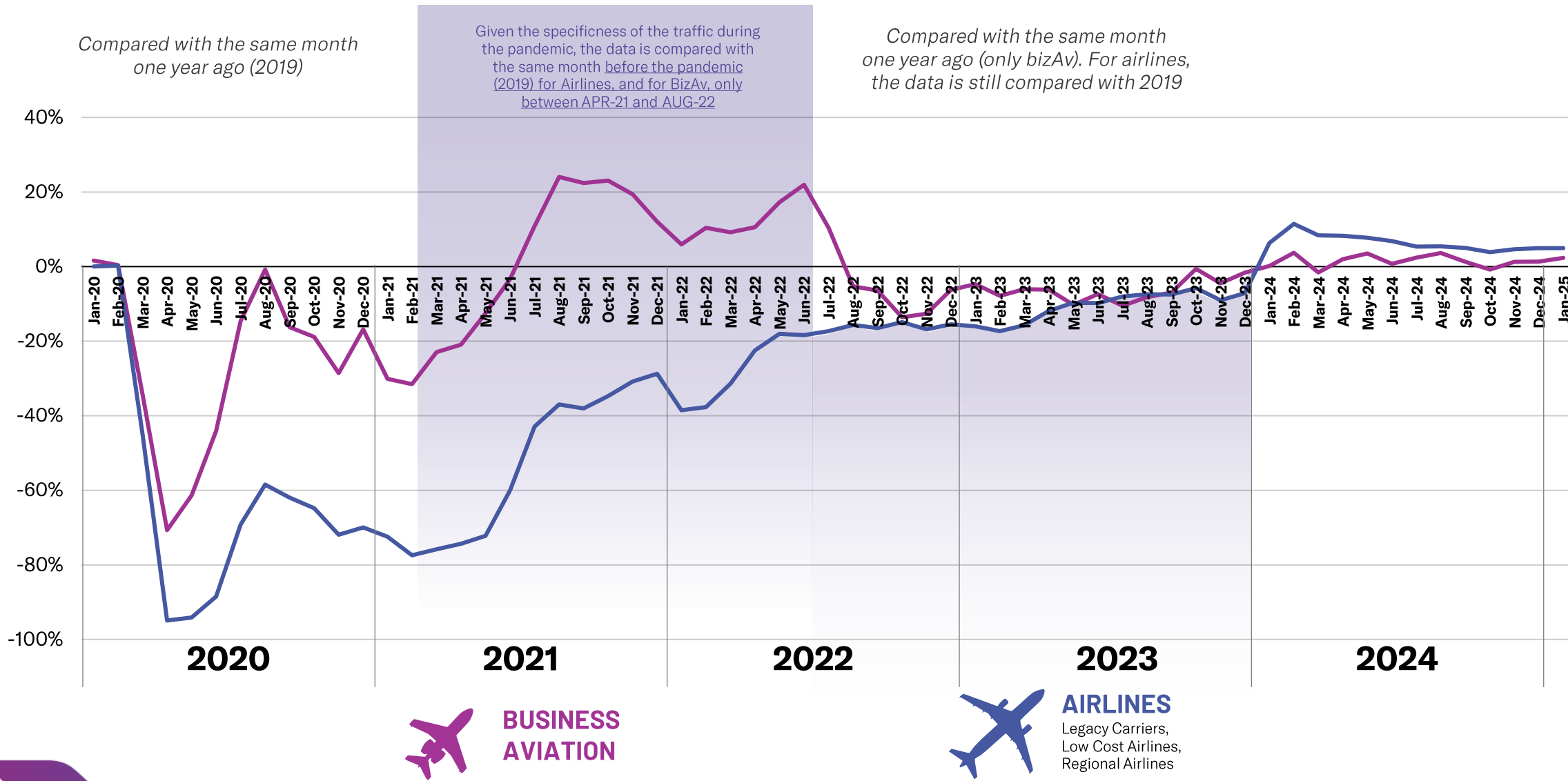
EUROPEAN BUSINESS AVIATION INTERCONTINENTAL CONNECTIONS – JANUARY 2025

MONTHLY TRAFFIC & MONTHLY GROWTH



BUSINESS AVIATION VS. AIRLINES MONTHLY TRAFFIC GROWTH

EBAA TRAFFIC TRACKER - JANUARY 2025

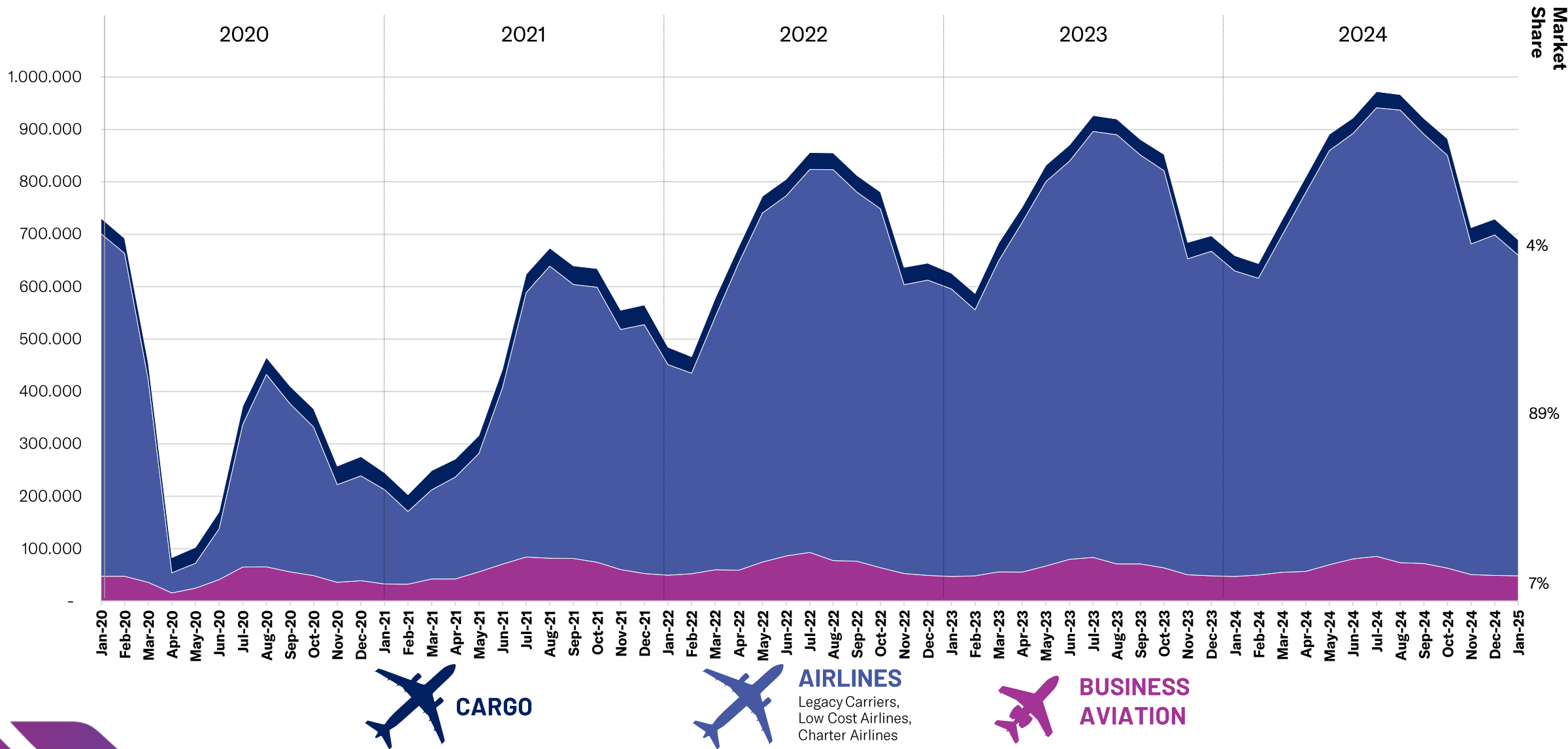


BUSINESS AVIATION VS. AIRLINES & CARGO

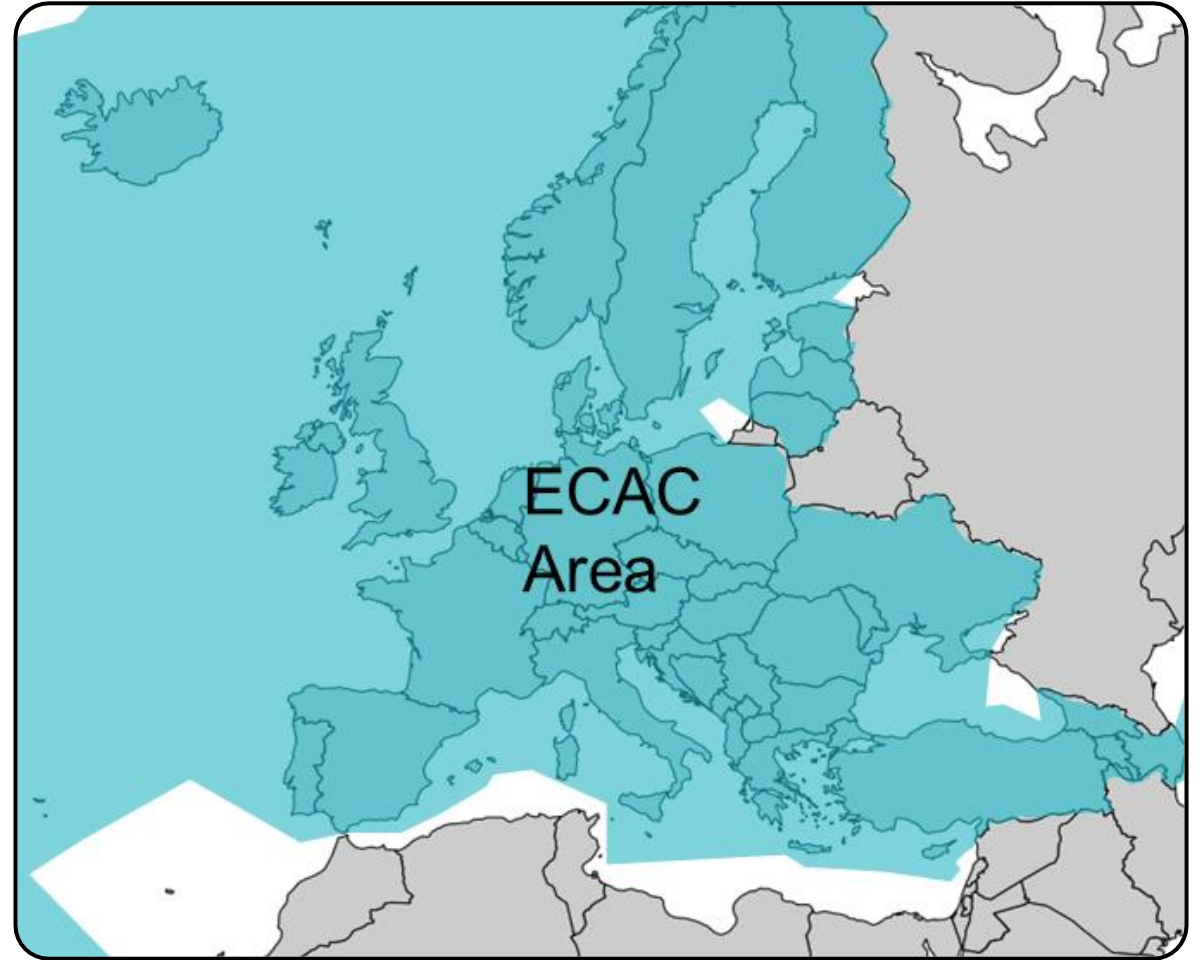
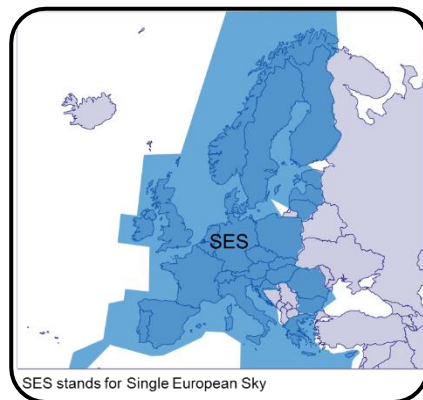
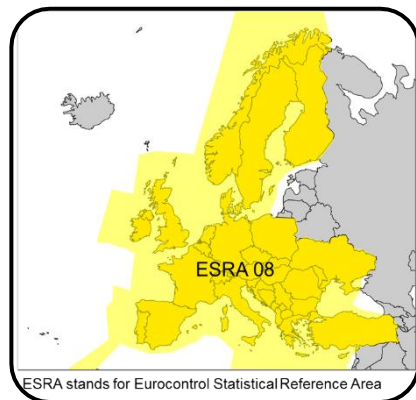
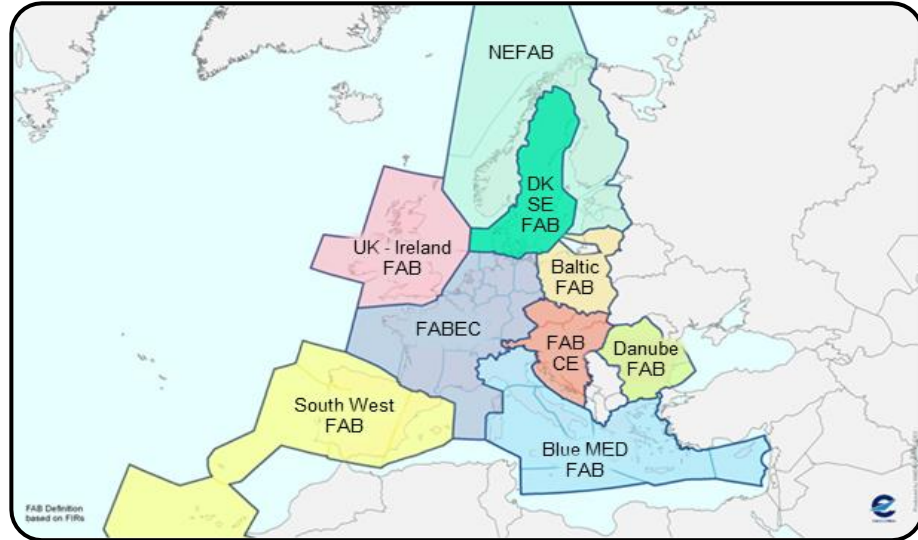
MONTHLY TRAFFIC MARKET SHARE



EBA TRAFFIC TRACKER - JANUARY 2025



AREAS



ECAC stands for European Civil Aviation Conference

The « Business Aviation » segment is defined by Eurocontrol as follows :

A318	Airbus A318	Airbus	Bizliner	flight type G only
A319	Airbus A319	Airbus	Bizliner	flight type G only
A320	Airbus A320	Airbus	Bizliner	flight type G only
ASTR	Gulfstream G100	Gulfstream	Midsize Jet	
B350	King Air 350	Hawker Beechcraft	Turboprop	flight type G and N only
B737	Boeing 737-700	Boeing	Bizliner	flight type G only
B738	Boeing 737-800	Boeing	Bizliner	flight type G only
B739	Boeing 737-900	Boeing	Bizliner	flight type G only
B748	Boeing 747-8I	Boeing	Bizliner	flight type G only
B77L	Boeing 777-200 Freighter	Boeing	Bizliner	flight type G only
B77W	Boeing 777-300ER	Boeing	Bizliner	flight type G only
B788	Boeing 787-8	Boeing	Bizliner	flight type G only
B789	Boeing 787-9	Boeing	Bizliner	flight type G only
BE10	KingAir 100	Hawker Beechcraft	Turboprop	
BE20	King Air 200	Hawker Beechcraft	Turboprop	
BE30	Super King Air 300	Hawker Beechcraft	Turboprop	
BE40	Hawker Beechjet 400	Hawker Beechcraft	Light Jet	
BE90	King Air 90	Hawker Beechcraft	Turboprop	
BE9L	King Air 90	Hawker Beechcraft	Turboprop	
BE9T	KingAir90	Hawker Beechcraft	Turboprop	
C208	Cessna 208 Caravan	Cessna	Turboprop	
C25A	Cessna Citation CJ2	Cessna	Light Jet	
C25B	Cessna Citation CJ3	Cessna	Light Jet	
C25C	Cessna Citation CJ4	Cessna	Light Jet	
C25M	Cessna M2	Cessna	Light Jet	
C425	Cessna Corsair	Cessna	Turboprop	
C441	Cessna Conquest	Cessna	Turboprop	
C500	Cessna Citation I	Cessna	Light Jet	
C501	Cessna Citation ISP	Cessna	Light Jet	
C510	Cessna Citation Mustang	Cessna	Light Jet	
C525	Cessna Citation CJ1	Cessna	Light Jet	
C550	Cessna Citation II	Cessna	Light Jet	
C551	Cessna Citation IISP	Cessna	Light Jet	
C55B	Cessna Citation Bravo	Cessna	Light Jet	
C560	Cessna Citation V	Cessna	Light Jet	
C56X	Cessna Citation Excel / XLS	Cessna	Light Jet	

C650	Cessna Citation III	Cessna	Midsize Jet	
C680	Citation Sovereign	Cessna	Midsize Jet	
C750	Cessna Citation X	Cessna	Midsize Jet	
CL30	Challenger 300 series	Bombardier	Midsize Jet	
CL35	Challenger 350	Bombardier	Midsize Jet	
CL60	Challenger 600 series	Bombardier	Heavy Jet	
CRJ2	Challenger 800-850	Bombardier	Heavy Jet	flight type G only
E135	Embraer RJ135	Embraer	Heavy Jet	flight type G only
E145	Embraer RJ145	Embraer	Heavy Jet	flight type G only
E190	Embraer 190	Embraer	Bizliner	flight type G only
E35L	Legacy 600 series	Embraer	Heavy Jet	
E50P	Embraer Phenom 100	Embraer	Light Jet	
E545	Legacy 450 / Praetor 500	Embraer	Midsize Jet	
E550	Embraer Legacy 500	Embraer	Midsize Jet	
E55P	Embraer Phenom 300	Embraer	Light Jet	flight type G and N only
E75L	Embraer RJ175	Embraer	Bizliner	flight type G only
EA50	Eclipse 500	Eclipse	Light Jet	
F2TH	Dassault Falcon 2000	Dassault	Heavy Jet	
F900	Dassault Falcon 900	Dassault	Heavy Jet	
FA10	Dassault Falcon 10/100	Dassault	Light Jet	
FA20	Dassault Falcon 20/200	Dassault	Midsize Jet	
FA50	Dassault Falcon 50	Dassault	Midsize Jet	
FA6X	Dassault Falcon 6X	Dassault	Heavy Jet	
FA7X	Dassault Falcon 7X	Dassault	Heavy Jet	
FA8X	Dassault Falcon 8X	Dassault	Heavy Jet	
G150	Gulfstream G150	Gulfstream	Midsize Jet	
G280	Gulfstream G280	Gulfstream	Midsize Jet	
GA5C	Gulfstream G500/550	Gulfstream	Heavy Jet	
GA6C	Gulfstream G600/650	Gulfstream	Heavy Jet	
GALX	Gulfstream G200	Gulfstream	Midsize Jet	
GL5T	Global 5000	Bombardier	Heavy Jet	
GL6T	Global 6000	Bombardier	Heavy Jet	
GLEX	Global Express / 6000	Bombardier	Heavy Jet	
GLF2	Gulfstream 2	Gulfstream	Heavy Jet	
GLF3	Gulfstream 3	Gulfstream	Heavy Jet	
GLF4	Gulfstream G300/450	Gulfstream	Heavy Jet	
GLF5	Gulfstream G500/550	Gulfstream	Heavy Jet	

GLF6	Gulfstream G600/650	Gulfstream	Heavy Jet	flight type G and N only
H25B	Hawker 700-900	Hawker Beechcraft	Midsize Jet	
H25C	British Aerospace 125-1000	British Aerospace	Light Jet	
HA4T	Hawker 4000	Hawker Beechcraft	Midsize Jet	
HDJT	HondaJet	Honda	Light Jet	
HF20	Hansa Jet	Hamburger Flugzeugbau	Light Jet	
LJ23	Learjet 23	Bombardier	Light Jet	
LJ24	Learjet 24	Bombardier	Light Jet	
LJ25	Learjet 25	Bombardier	Light Jet	
LJ28	Learjet 28	Bombardier	Light Jet	
LJ31	Learjet 31	Bombardier	Light Jet	
LJ35	Learjet 35	Bombardier	Light Jet	
LJ40	Learjet 40	Bombardier	Light Jet	
LJ45	Learjet 45	Bombardier	Light Jet	
LJ55	Learjet 55	Bombardier	Midsize Jet	
LJ60	Learjet 60	Bombardier	Midsize Jet	
LJ70	Learjet 70	Bombardier	Midsize Jet	
LJ75	Learjet 75	Bombardier	Midsize Jet	
P180	Piaggio P180 Avanti	Piaggio Aerospace	Turboprop	
PAY2	Piper Cheyenne 2	Piper Aircraft	Turboprop	
PAY3	Piper Cheyenne 3	Piper Aircraft	Turboprop	
PAY4	Piper Cheyenne 400	Piper Aircraft	Turboprop	
PC12	Pilatus PC-12	Pilatus	Turboprop	
PC24	Pilatus PC24	Pilatus	Light Jet	
PRM1	Premier 1	Hawker Beechcraft	Light Jet	
SBR1	Sabreliner	NA Rockwell	Light Jet	
SBR2	Sabreliner	NA Rockwell	Light Jet	
SJ30	Syberjet SJ30	SyberJet	Light Jet	
TBM7	Socata TBM 700	Daher-Socata	Turboprop	
TBM8	Socata TBM 850	Daher-Socata	Turboprop	
TBM9	Socata TBM 900 series	Daher-Socata	Turboprop	
WW23	1123 Westwind	IAI	Midsize Jet	
WW24	1124 Westwind	IAI	Midsize Jet	
EA50	Eclipse 500	Eclipse	Light Jet	

The list is permanently updated ...

DISCLAIMER

This report is provided by EBAA for information purposes only and no representation, warranties or other assurances, express or implied, are given as to the quality, accuracy, or completeness of the information contained in, or provided in connection with the report.

Recipients of this report must determine for themselves whether any matters referred to are suitable for their purposes. Neither EBAA nor any of their affiliates, agents, partners, representatives, consultants or any other company, firm or organisation involved in producing this report, nor any of their successors or assign or any employees, officer or director of any of them shall have any liability with respect to the use or reliance on the report by any person, irrespective of any negligence, omission or default, on the part of the foregoing persons.

Any reproduction or publication of this report, in whole or in part, is strictly forbidden without the written consent of EBAA. Please write to communications@ebaa.org for questions related to the use of this report.



For more information, please contact:

Square de Meeûs 37
BE - 1000 Brussels - Belgium

Phone: +32 2 318 28 00
Fax: +32 2 318 28 01

Follow us



@EUROPEANBUSINESSAVIATIONASSOCIATION



@EBAAORG



EUROPEAN BUSINESS AVIATION ASSOCIATION



@EUROPEAN_BUSINESS_AVIATION

www.ebaa.org

