

BUSINESS AVIATION TRAFFIC TRACKER EUROPE

AUGUST 2024



EUROPEAN BUSINESS AVIATION ASSOCIATION



DEPARTURES, ARRIVALS, INTERNALS AND OVERFLIGHTS (DAIO) REPORT

TOTAL BUSINESS AVIATION FLIGHTS



Business Aviation (ECAC Area)

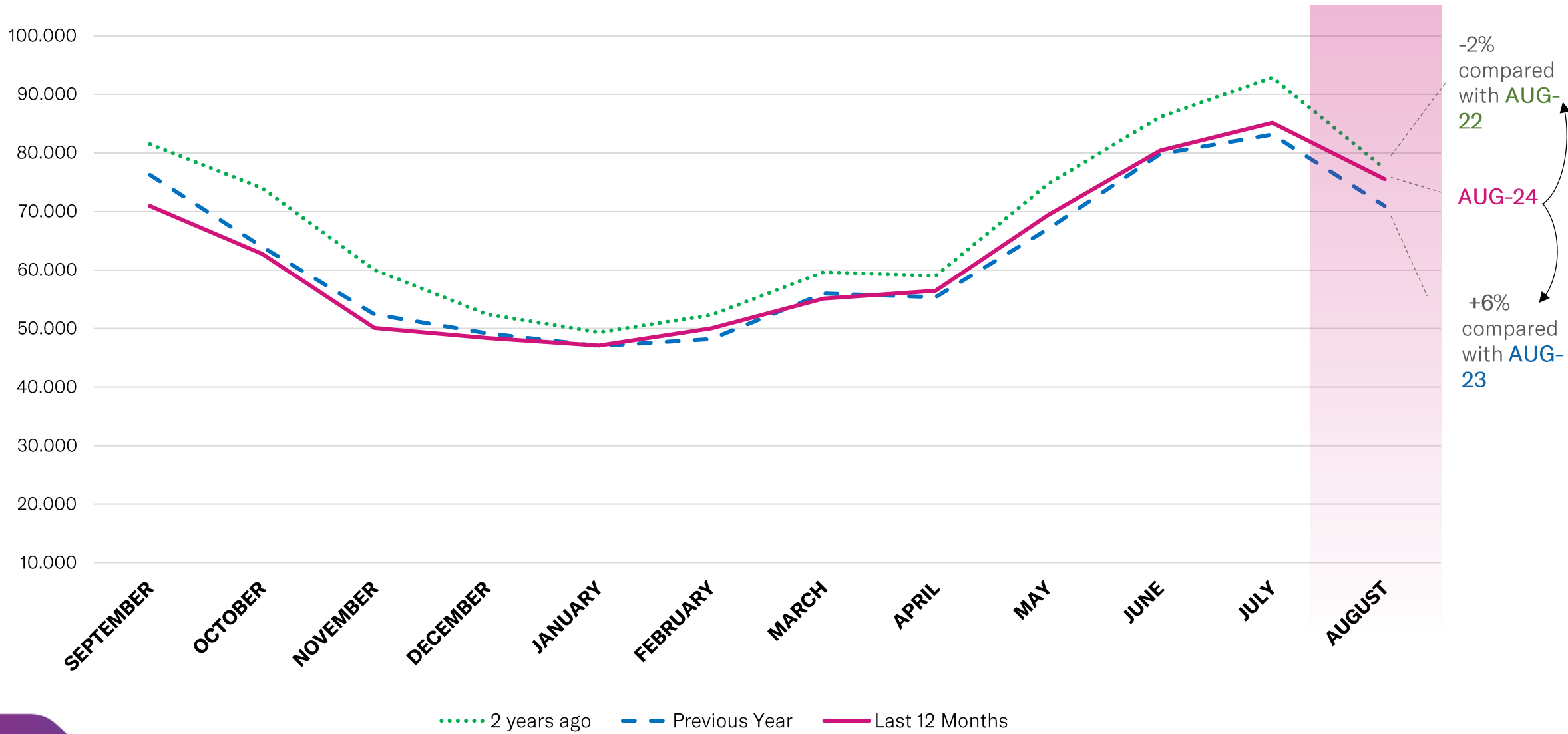
	ARRIVAL			DEPARTURE			INTERNAL			OVERFLIGHT			PREVIOUS YEAR	CURRENT YEAR	GROWTH
	Previous Year	Current Year	Growth	Previous Year	Current Year	Growth	Previous Year	Current Year	Growth	Previous Year	Current Year	Growth			
Sep 2023	4.033	3.468	-14,0%	3.928	3.416	-13,0%	67.741	63.684	-6,0%	386	369	-4,4%	76.088	70.937	-6,8%
Oct 2023	3.649	3.629	-0,5%	3.807	3.744	-1,7%	55.860	55.751	-0,2%	504	429	-14,9%	63.820	63.553	-0,4%
Nov 2023	3.234	3.072	-5,0%	3.194	3.020	-5,4%	45.443	43.512	-4,2%	482	482	0,0%	52.353	50.086	-4,3%
Dec 2023	3.001	2.875	-4,2%	3.116	3.023	-3,0%	42.414	41.932	-1,1%	611	560	-8,3%	49.142	48.390	-1,5%
Jan 2024	3.036	3.250	7,0%	2.825	3.041	7,6%	40.633	40.239	-1,0%	462	556	20,3%	46.956	47.086	0,3%
Feb 2024	2.642	3.025	14,5%	2.578	3.006	16,6%	42.543	43.497	2,2%	379	482	27,2%	48.142	50.010	3,9%
Mar 2024	3.315	3.267	-1,4%	3.257	3.270	0,4%	48.909	48.026	-1,8%	469	541	15,4%	55.950	55.104	-1,5%
Apr 2024	3.232	3.474	7,5%	3.069	3.356	9,4%	48.589	49.083	1,0%	422	553	31,0%	55.312	56.466	2,1%
May 2024	3.610	3.989	10,5%	3.374	3.642	7,9%	59.614	61.167	2,6%	422	581	37,7%	67.020	69.379	3,5%
Jun 2024	4.269	4.407	3,2%	3.922	4.206	7,2%	71.129	71.292	0,2%	333	498	49,5%	79.653	80.403	0,9%
Jul 2024	3.765	4.147	10,1%	3.889	4.142	6,5%	75.177	76.393	1,6%	324	478	47,5%	83.155	85.160	2,4%
Aug 2024	3.486	3.869	11,0%	3.510	4.034	14,9%	63.694	65.185	2,3%	253	433	71,1%	70.943	75.521	3,6%
Grand Total	41.272	42.472	2,9%	40.469	41.900	3,5%	661.746	659.761	-0,3%	5.047	5.962	18,1%	748.534	750.095	0,2%

DEPARTURES, ARRIVALS, INTERNALS AND OVERFLIGHTS (DAIO) REPORT

TOTAL BUSINESS AVIATION FLIGHTS



EBAA TRAFFIC TRACKER - AUGUST 2024



-2% compared with **AUG-22**

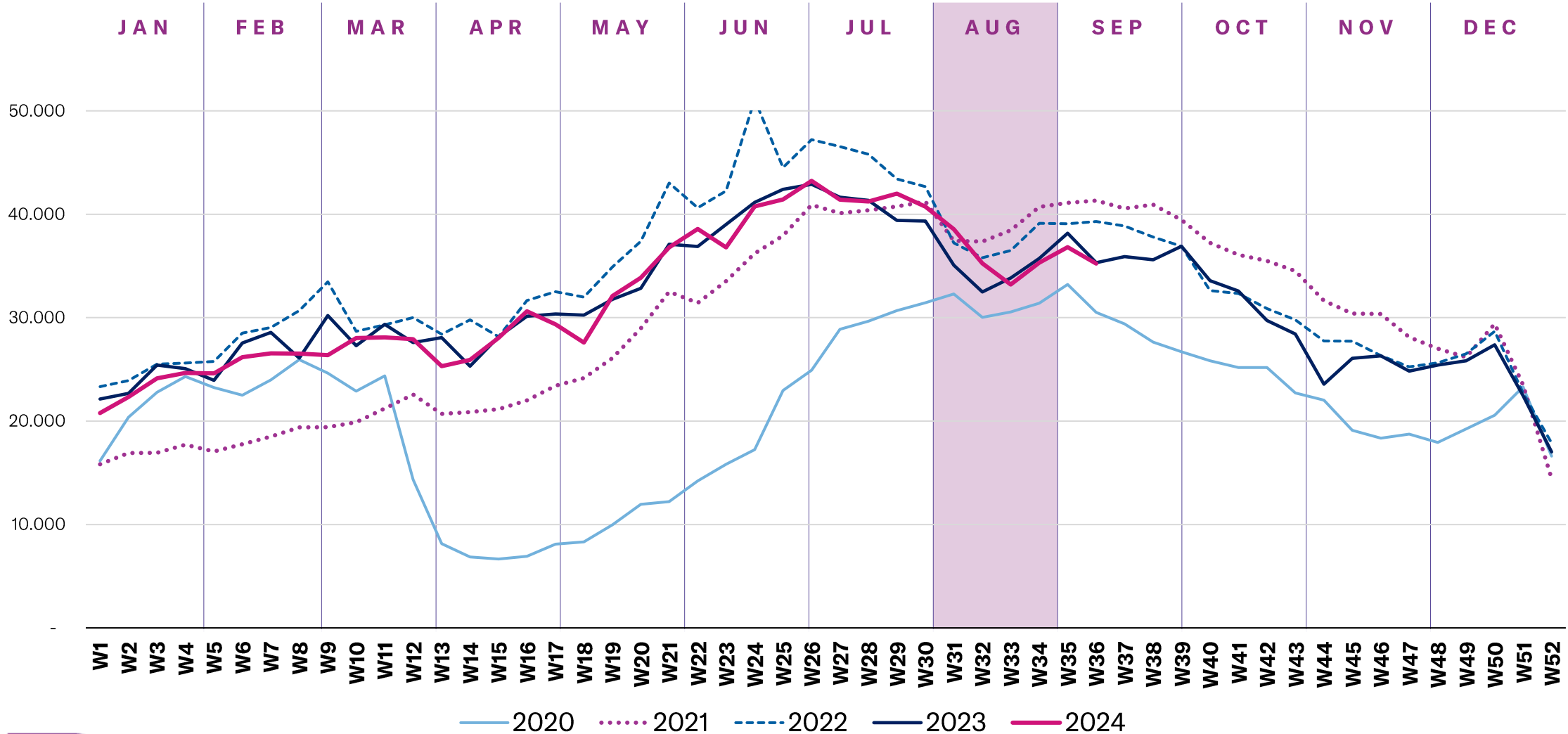
AUG-24

+6% compared with **AUG-23**

WEEK BY WEEK DETAILS IN EUROPE

BUSINESS AVIATION WEEKLY MOVEMENTS (DEPARTURES + ARRIVALS)

EBAA TRAFFIC TRACKER - AUGUST 2024

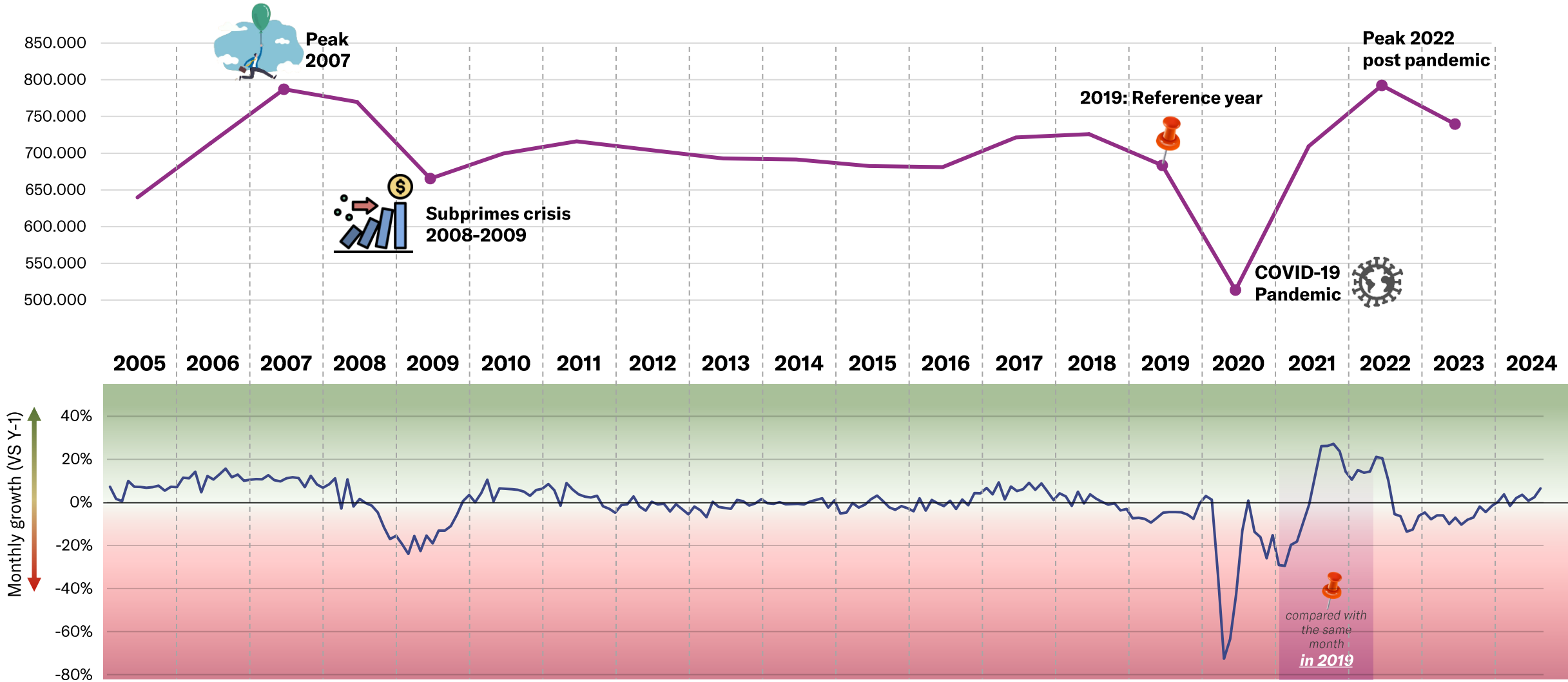


BUSINESS AVIATION IN EUROPE : 2005 – NOW

MONTHLY ACTIVITY AND GROWTH



EBAA TRAFFIC TRACKER - AUGUST 2024



EUROPEAN STATES – STATE OF PLAY

« YEAR-TO-DATE » details in Europe (flights from january onwards)



STATE OF PLAY - YTD (from january onwards)

EBAA TRAFFIC TRACKER - AUGUST 2024

	MONTH CURRENT YEAR	MONTH GROWTH	YTD CURRENT YEAR	YTD GROWTH
FRANCE	22.869	3%	170.710	-2%
UNITED KINGDOM	18.593	-1%	141.003	0%
GERMANY	13.508	-2%	117.149	-1%
ITALY	17.102	-2%	106.863	1%
SPAIN	11.921	0%	82.012	3%
SWITZERLAND	8.515	5%	68.206	-1%
TURKEY	7.598	1%	40.045	0%
GREECE	7.511	3%	32.044	7%
NORWAY	4.037	6%	28.028	4%
AUSTRIA	3.849	7%	28.026	-1%
SWEDEN	3.444	-5%	26.552	-7%
BELGIUM	2.127	5%	18.562	-3%
NETHERLANDS	2.206	3%	18.504	-7%
POLAND	2.051	2%	15.376	1%
CZECH REPUBLIC	1.927	4%	14.648	6%
PORTUGAL	1.918	9%	13.495	-5%
CROATIA	2.784	5%	11.135	-1%
IRELAND	1.497	-13%	11.005	-5%
DENMARK	1.327	4%	10.223	3%
ICELAND	1.417	262%	9.267	268%
ROMANIA	1.139	8%	9.039	12%
FINLAND	924	-24%	8.231	-11%
HUNGARY	876	-10%	7.152	1%
CYPRUS	707	-2%	5.576	7%
SLOVAKIA	687	-22%	5.224	-5%
SERBIA	701	-15%	4.942	-13%
LUXEMBOURG	444	-2%	4.557	-4%
BULGARIA	665	-2%	4.232	1%
MALTA	516	3%	3.481	2%
MONTENEGRO	742	21%	2.956	5%
SLOVENIA	366	-5%	2.610	7%
LITHUANIA	234	-4%	1.632	-13%
LATVIA	291	14%	1.578	-3%
ESTONIA	206	-28%	1.536	-6%
BOSNIA AND HERZEGOVINA	183	13%	1.194	25%
ALBANIA	141	-11%	967	-1%
MOLDOVA	162	-2%	877	7%
MACEDONIA	95	-9%	530	-14%
UKRAINE				

This report is made possible thanks to EUROCONTROL and WINGX ADVANCE - www.ebaa.org

TOP 10 ACTIVE AIRPORTS – AUGUST 2024

AVERAGE DAILY BUSINESS AVIATION DEPARTURES



EBAA TRAFFIC TRACKER - AUGUST 2024

RANK	ICAO CODE	NAME	MONTH CURRENT YEAR	MONTH GROWTH	YTD CURRENT YEAR	YTD GROWTH
1	LFMN	Nice	74,3	-0,9%	54,9	2,0%
2	LFPB	Paris Le Bourget	65,0	23,3%	72,3	-2,9%
3	LIEO	Olbia	57,0	6,1%	19,9	1,0%
4	LSGG	Geneva	39,9	-7,7%	43,8	-4,1%
5	LEIB	Ibiza	38,8	-2,7%	21,6	-2,7%
6	EGLF	Farnborough	38,0	-3,8%	38,3	-4,3%
7	LGAV	Athens	34,5	3,9%	21,8	8,5%
8	EGGW	London Luton	34,0	3,6%	37,0	3,2%
9	LSZH	Zurich	33,6	10,6%	34,2	-2,2%
10	LEPA	Palma de Mallorca	31,6	-5,5%	24,6	-0,8%

TOP 30 AIRPORTS – STATE OF PLAY

« YEAR-TO-DATE » details in Europe (flights from january onwards)

STATE OF PLAY - YTD (from january onwards)

	MONTH CURRENT YEAR	MONTH GROWTH	YTD CURRENT YEAR	YTD GROWTH
🇫🇷 PARIS LE BOURGET	4.090	19%	36.381	-3%
🇫🇷 NICE CÔTE D'AZUR	4.861	0%	27.958	2%
🇨🇭 GENEVA INTERNATIONAL	2.659	-7%	22.837	-3%
🇬🇧 FARNBOROUGH	2.491	-3%	19.407	-4%
🇬🇧 LONDON LUTON	2.223	6%	18.785	4%
🇨🇭 ZURICH	2.154	10%	17.474	-2%
🇮🇹 MILANO LINATE	1.832	-6%	17.148	-1%
🇬🇧 LONDON BIGGIN HILL	1.834	-9%	14.770	-2%
🇹🇷 ISTANBUL ATATÜRK	2.017	7%	12.566	17%
🇪🇸 PALMA DE MALLORCA	2.050	-5%	12.392	0%
🇬🇷 ATHENS INTERNATIONAL	2.171	4%	11.218	9%
🇮🇹 ROMA CIAMPINO	1.153	-12%	10.989	-2%
🇪🇸 IBIZA	2.489	-3%	10.865	-2%
🇪🇸 MADRID BARAJAS	964	12%	10.800	11%
🇮🇹 OLBIA COSTA SMERALDA	3.639	7%	10.169	3%
🇪🇸 MALAGA COSTA DEL SOL	1.637	-1%	9.925	2%
🇫🇷 CANNES MANDELIEU	1.708	0%	9.521	-2%
🇨🇪 PRAGUE VACLAV HAVEL	1.212	1%	9.425	4%
🇩🇪 MÜNCHEN	1.319	38%	9.205	4%
🇩🇪 BERLIN SCHÖNEFELD	770	-17%	9.197	0%
🇳🇱 AMSTERDAM SCHIPHOL	1.135	2%	8.997	-12%
🇦🇹 WIEN SCHWECHAT	1.059	7%	8.873	-2%
🇪🇸 BARCELONA	1.063	8%	8.726	5%
🇬🇧 LONDON STANSTED	1.084	-2%	7.331	-4%
🇦🇹 SALZBURG W. A. MOZART	1.164	15%	6.564	1%
🇩🇪 HAMBURG	683	-11%	6.360	-7%
🇩🇪 STUTTGART	513	-18%	6.013	-6%
🇩🇪 KÖLN BONN	731	-2%	5.927	3%
🇭🇺 BUDAPEST INTERNATIONAL	737	-9%	5.818	7%
🇩🇪 DUSSELDORF	643	-5%	5.796	2%

TOP 30 BUSINESS AVIATION ROUTES – STATE OF PLAY

« YEAR-TO-DATE » details in Europe (flights from january onwards)

EBAA TRAFFIC TRACKER - AUGUST 2024

AIRPORT 1		AIRPORT 2		YTD CURRENT YEAR	YTD GROWTH(*)
🇫🇷 LFPB	Paris Le Bourget	🇨🇭 LSGG	Geneva International	2.129	-2%
🇫🇷 LFMN	Nice Côte d'Azur	🇫🇷 LFPB	Paris Le Bourget	1.874	0%
🇮🇹 LIRA	Roma Ciampino	🇮🇹 LIML	Milano Linate	1.229	9%
🇨🇭 LSGG	Geneva International	🇫🇷 LFMN	Nice Côte d'Azur	1.214	2%
🇹🇷 LTBA	Istanbul Atatürk	🇹🇷 LTAC	Ankara Esenboğa	1.170	24%
🇹🇷 LTBA	Istanbul Atatürk	🇹🇷 LTFE	Mugla Milas Bodrum	1.152	23%
🇮🇱 LLBG	Tel Aviv International	🇨🇾 LCLK	Larnaka International	1.116	50%
🇫🇷 LFMN	Nice Côte d'Azur	🇬🇧 EGLF	Farnborough	1.048	-13%
🇫🇷 LFPB	Paris Le Bourget	🇬🇧 EGGW	London Luton	978	12%
🇫🇷 LFPB	Paris Le Bourget	🇬🇧 EGLF	Farnborough	917	-7%
🇫🇷 LFMN	Nice Côte d'Azur	🇬🇧 EGGW	London Luton	852	1%
🇮🇹 LIML	Milano Linate	🇮🇹 LIEO	Olbia Costa Smeralda	812	6%
🇫🇷 LFPB	Paris Le Bourget	🇮🇹 LIML	Milano Linate	810	-3%
🇮🇹 LIML	Milano Linate	🇫🇷 LFMN	Nice Côte d'Azur	773	6%
🇬🇧 EGKB	London Biggin Hill	🇫🇷 LFPB	Paris Le Bourget	756	1%
🇮🇹 LIEO	Olbia Costa Smeralda	🇫🇷 LFMN	Nice Côte d'Azur	674	7%
🇬🇧 EGLF	Farnborough	🇨🇭 LSGG	Geneva International	663	-16%
🇪🇸 LEBL	Barcelona	🇪🇸 LEMD	Madrid Barajas	644	2%
🇨🇭 LSZH	Zurich	🇫🇷 LFMN	Nice Côte d'Azur	625	2%
🇫🇷 LFPB	Paris Le Bourget	🇫🇷 LFMD	Cannes Mandelieu	623	-10%
🇬🇧 EGGD	Bristol	🇬🇧 EGNL	Walney Island	612	-13%
🇬🇧 EGNL	Walney Island	🇬🇧 EGLF	Farnborough	610	-2%
🇫🇷 LFTH	Toulon-Hyeres	🇫🇷 LFPB	Paris Le Bourget	609	-12%
🇨🇭 LSZH	Zurich	🇨🇭 LSGG	Geneva International	596	-11%
🇬🇧 LSZH	Zurich	🇬🇧 LFPB	Paris Le Bourget	593	-15%
🇬🇧 EGKB	London Biggin Hill	🇫🇷 LFMN	Nice Côte d'Azur	586	-8%
🇸🇰 LZIB	Bratislava M. R. Stefanika	🇨🇪 LKPR	Prague Vaclav Havel	580	26%
🇪🇸 LEIB	Ibiza	🇪🇸 LEBL	Barcelona	571	-1%
🇬🇧 EGLF	Farnborough	🇬🇧 EGGW	London Luton	569	-1%
🇪🇸 LEPA	Palma de Mallorca	🇪🇸 LEMH	Menorca	559	21%

TOP 10 FLOWS– AUGUST 2024

AVERAGE DAILY BUSINESS AVIATION FLIGHTS



EBAA TRAFFIC TRACKER - AUGUST 2024

ORIGIN	DESTINATION	MONTH CURRENT YEAR	MONTH GROWTH	YTD CURRENT YEAR	YTD GROWTH
France	France	129,4	2,5%	131,6	-3,1%
UK-Continental	UK-Continental	116,1	-7,2%	111,9	-1,8%
Germany	Germany	93,0	-8,7%	106,3	-4,5%
Italy	Italy	91,8	-0,1%	70,6	1,9%
Spain-Continental	Spain-Continental	64,0	0,3%	55,8	6,9%
Türkiye	Türkiye	55,3	1,1%	39,5	-1,0%
Norway-Continental	Norway-Continental	50,1	9,0%	45,3	5,0%
UK-Continental	France	37,7	12,1%	34,0	-2,1%
France	UK-Continental	37,6	9,6%	34,0	-1,9%
Italy	France	37,0	0,5%	28,4	3,0%

TRAFFIC PER STATE – AUGUST 2024

AVERAGE DAILY BUSINESS AVIATION FLIGHTS – PART 1



EBA A TRAFFIC TRACKER - AUGUST 2024

STATE	MONTH CURRENT YEAR	MONTH PREVIOUS YEAR	MONTH CHANGE	MONTH GROWTH	YTD CURRENT YEAR	YTD PREVIOUS YEAR	YTD CHANGE	YTD GROWTH
ECAC	2.371,6	2.288,5	83,2	3,6%	2.119,4	2.087,0	32,4	1,6%
ESRA08	2.334,5	2.276,6	57,9	2,5%	2.084,1	2.072,5	11,6	0,6%
ESRA02	2.323,4	2.265,5	57,8	2,6%	2.074,4	2.061,8	12,6	0,6%
SES-RP2	2.250,6	2.196,0	54,6	2,5%	2.023,9	2.013,3	10,6	0,5%
SES-RP3	2.145,8	2.085,9	59,9	2,9%	1.926,8	1.915,4	11,5	0,6%
EU27	2.090,6	2.034,0	56,6	2,8%	1.875,6	1.866,6	9,0	0,5%
FABEC	1.412,6	1.367,9	44,8	3,3%	1.341,1	1.341,5	-0,4	0,0%
France	947,3	910,6	36,7	4,0%	856,1	851,1	5,0	0,6%
BLUE MED FAB	863,7	835,3	28,4	3,4%	621,1	609,8	11,4	1,9%
Italy	682,6	667,9	14,8	2,2%	513,3	505,7	7,6	1,5%
Germany	521,7	524,5	-2,8	-0,5%	550,6	559,2	-8,6	-1,5%
UK-Ireland FAB	509,1	496,8	12,3	2,5%	492,0	486,3	5,7	1,2%
UK-Continental	498,6	483,0	15,7	3,2%	482,9	476,1	6,8	1,4%
FAB CE	468,0	444,5	23,5	5,3%	399,4	394,8	4,6	1,2%
Switzerland	390,3	372,6	17,7	4,7%	391,5	386,0	5,5	1,4%
South West FAB	362,3	359,4	2,9	0,8%	319,7	314,4	5,3	1,7%
Spain	355,8	354,2	1,7	0,5%	312,8	307,8	4,9	1,6%
Spain-Continental	349,4	346,2	3,2	0,9%	305,0	299,0	6,0	2,0%
Greece	285,8	267,2	18,6	7,0%	161,8	153,5	8,3	5,4%
Austria	279,7	265,0	14,8	5,6%	250,3	252,4	-2,2	-0,9%
Türkiye	208,6	207,9	0,7	0,3%	157,4	155,7	1,7	1,1%
Belgium/Luxembourg	195,7	192,7	3,0	1,6%	216,7	222,0	-5,3	-2,4%

TRAFFIC PER STATE – AUGUST 2024

AVERAGE DAILY BUSINESS AVIATION FLIGHTS – PART 2



EBA A TRAFFIC TRACKER - AUGUST 2024

STATE	MONTH CURRENT YEAR	MONTH PREVIOUS YEAR	MONTH CHANGE	MONTH GROWTH	YTD CURRENT YEAR	YTD PREVIOUS YEAR	YTD CHANGE	YTD GROWTH
Croatia	206,1	183,8	22,3	12,1%	133,1	126,1	6,9	5,5%
Netherlands	151,3	143,3	8,0	5,6%	156,0	155,6	0,4	0,2%
DK-SE FAB	136,8	137,7	-0,9	-0,7%	128,3	130,9	-2,6	-2,0%
Serbia/Montenegro	148,2	137,1	11,1	8,1%	109,4	106,0	3,4	3,2%
NEFAB	112,5	111,1	1,4	1,3%	98,3	99,2	-0,9	-0,9%
Czech Republic	107,9	106,2	1,8	1,7%	109,8	105,4	4,4	4,2%
Danube FAB	95,9	101,5	-5,6	-5,5%	96,6	95,0	1,7	1,8%
Sweden	98,1	101,5	-3,5	-3,4%	93,3	97,2	-3,9	-4,0%
Hungary	88,6	94,2	-5,5	-5,9%	87,9	85,6	2,3	2,6%
Slovenia	98,7	89,5	9,2	10,2%	73,5	69,8	3,7	5,3%
Ireland	91,1	84,1	6,9	8,2%	92,3	87,9	4,3	4,9%
Bulgaria	73,9	81,3	-7,4	-9,1%	75,0	74,7	0,4	0,5%
Norway-Continental	84,3	78,6	5,7	7,3%	72,6	70,3	2,2	3,2%
Bosnia and Herzegovina	88,3	77,5	10,8	14,0%	61,1	59,2	2,0	3,4%
Baltic FAB	74,0	72,3	1,7	2,4%	68,2	69,5	-1,3	-1,9%
Poland	70,8	69,8	1,1	1,5%	65,9	67,2	-1,3	-1,9%
Denmark	70,0	69,0	1,0	1,4%	65,8	65,3	0,5	0,8%
Portugal-Lisbon/SantaMaria	70,4	65,9	4,5	6,9%	69,2	69,4	-0,2	-0,3%
Albania	81,2	63,5	17,7	28,0%	45,9	37,9	8,0	21,1%
Cyprus	55,6	63,0	-7,4	-11,8%	46,8	51,7	-4,9	-9,4%
Portugal-Continental	59,7	55,9	3,8	6,8%	57,5	57,9	-0,4	-0,7%
Slovakia	57,6	55,9	1,6	2,9%	53,7	50,3	3,4	6,8%

TRAFFIC PER STATE – AUGUST 2024

AVERAGE DAILY BUSINESS AVIATION FLIGHTS – PART 3



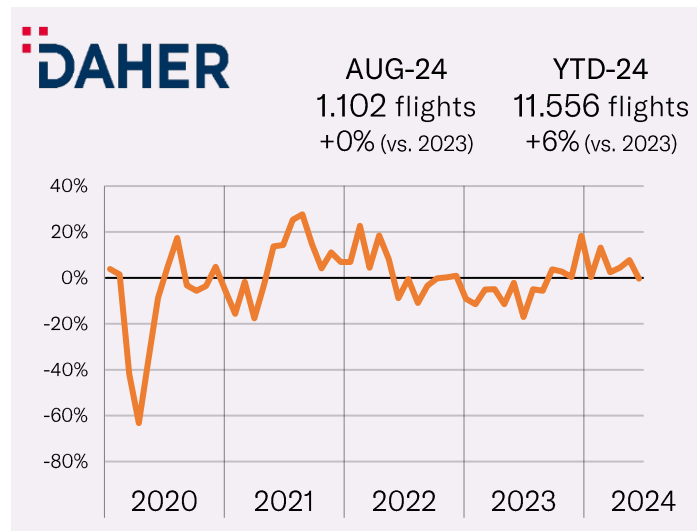
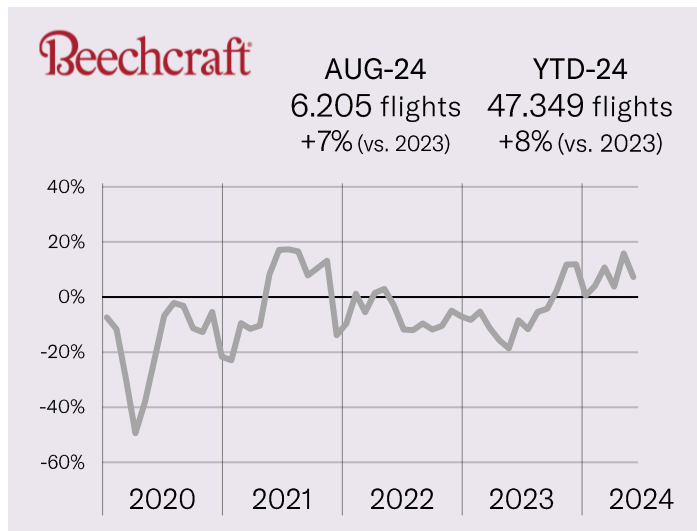
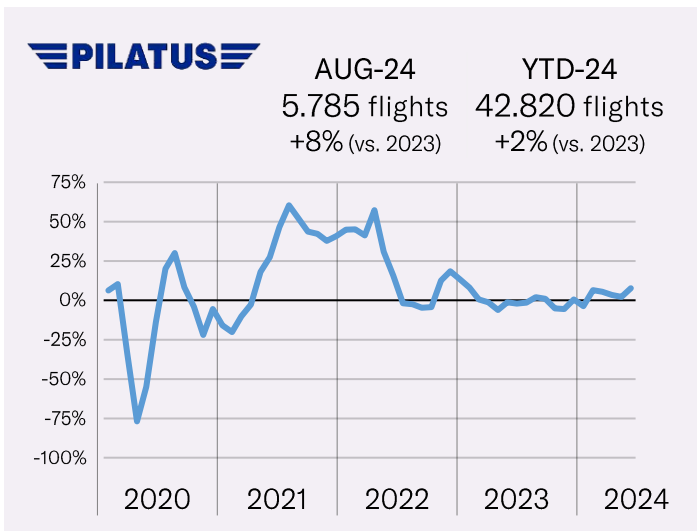
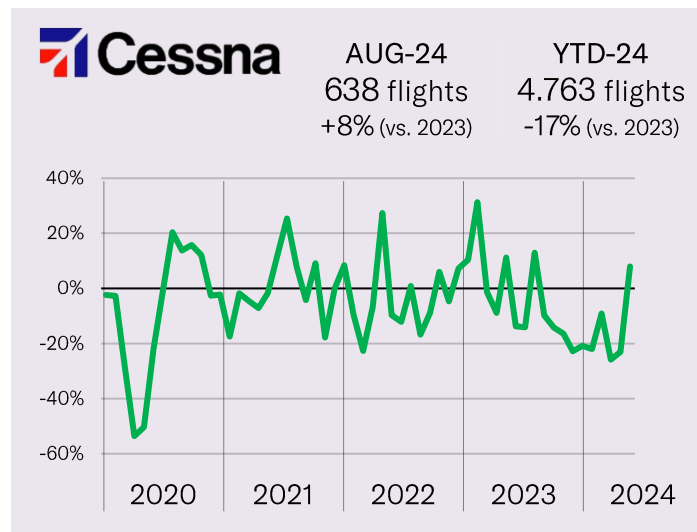
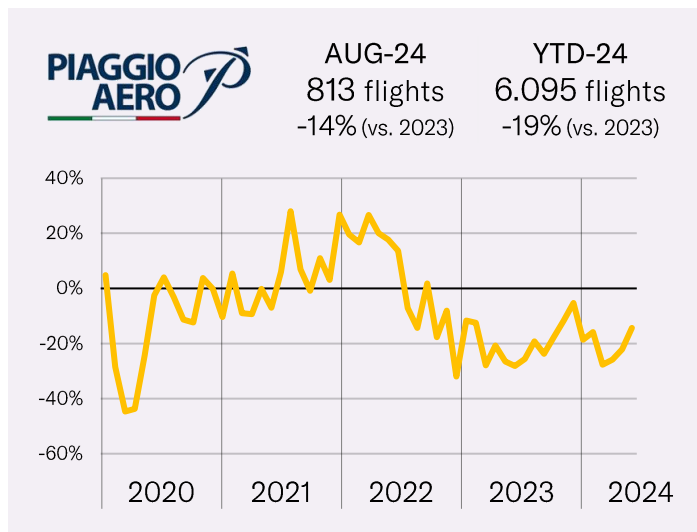
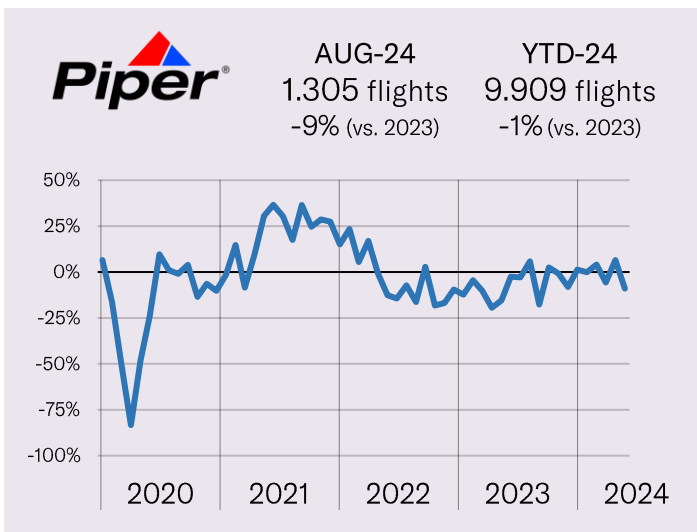
EBA A TRAFFIC TRACKER - AUGUST 2024

STATE	MONTH CURRENT YEAR	MONTH PREVIOUS YEAR	MONTH CHANGE	MONTH GROWTH	YTD CURRENT YEAR	YTD PREVIOUS YEAR	YTD CHANGE	YTD GROWTH
Romania	53,5	55,2	-1,7	-3,2%	57,7	55,0	2,6	4,8%
North Macedonia	54,6	46,1	8,6	18,6%	31,9	28,2	3,7	13,2%
Egypt	48,5	36,2	12,4	34,1%	40,6	35,7	4,8	13,6%
Morocco	35,0	33,3	1,7	5,1%	39,4	39,8	-0,4	-1,0%
Israel	26,2	29,5	-3,3	-11,1%	21,8	25,4	-3,6	-14,2%
Malta	25,9	24,7	1,3	5,1%	22,6	20,4	2,3	11,1%
Georgia	27,1	24,0	3,1	12,9%	21,7	17,2	4,5	26,4%
Finland	21,0	23,4	-2,4	-10,2%	19,5	22,5	-3,1	-13,7%
Iceland	49,3	21,8	27,5	126,5%	39,8	18,6	21,2	113,7%
Azerbaijan	20,4	20,1	0,3	1,3%	22,4	21,2	1,1	5,3%
Portugal-SantaMaria	18,8	16,7	2,1	12,6%	19,4	18,4	1,0	5,7%
Spain-Canaries	14,3	14,7	-0,4	-2,6%	18,2	18,7	-0,5	-2,6%
Latvia	15,0	14,4	0,6	4,0%	11,5	11,7	-0,3	-2,3%
Lithuania	14,5	13,9	0,6	4,4%	11,4	12,3	-0,9	-7,4%
Estonia	9,9	11,8	-1,9	-16,1%	8,8	10,3	-1,5	-14,8%
Tunisia	10,9	10,2	0,7	7,3%	9,4	8,8	0,6	6,3%
Armenia	5,6	6,6	-1,1	-16,0%	4,6	6,9	-2,3	-33,2%
Libya	6,2	5,7	0,5	8,4%	4,9	4,2	0,7	16,2%
Moldova	4,5	4,5	-0,1	-1,4%	3,0	2,6	0,4	15,9%
Belarus	0,9	0,8	0,2	20,8%	0,8	0,7	0,0	4,1%
Ukraine	0,1	0,1	0,0	-33,3%	0,1	0,1	0,0	-4,9%

TURBOPROPS OEMS – AUGUST 2024

MONTHLY TRAFFIC & MONTHLY GROWTH

EBA A TRAFFIC TRACKER - AUGUST 2024



JET OEMS (1/2) – AUGUST 2024

MONTHLY TRAFFIC & MONTHLY GROWTH

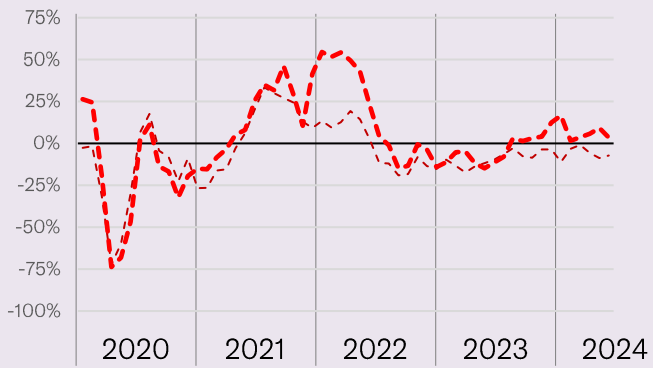


EBAA TRAFFIC TRACKER - AUGUST 2024



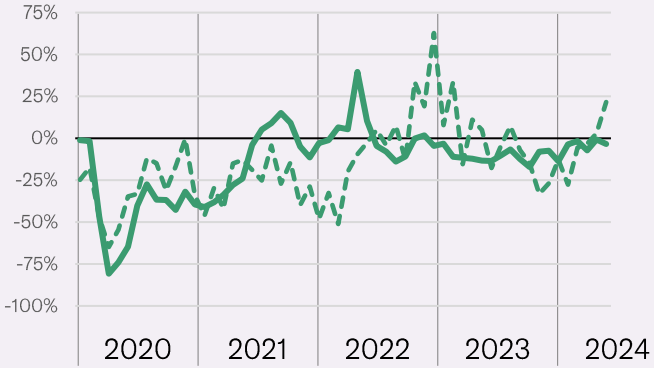
AUG-24
19.882 flights
-5% (vs. 2023)

YTD-24
141.184 flights
-3% (vs. 2023)



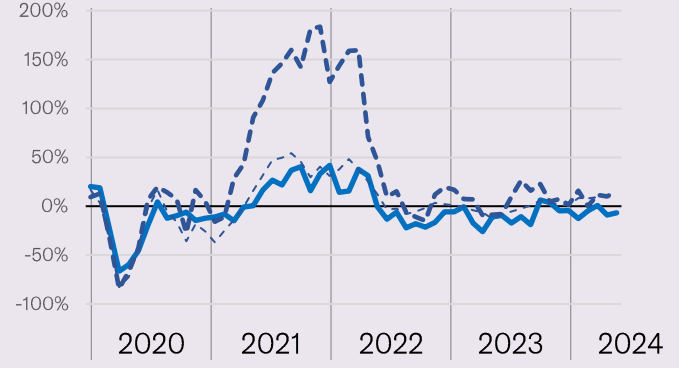
AUG-24
5.034 flights
-3% (vs. 2023)

YTD-24
40.379 flights
-6% (vs. 2023)



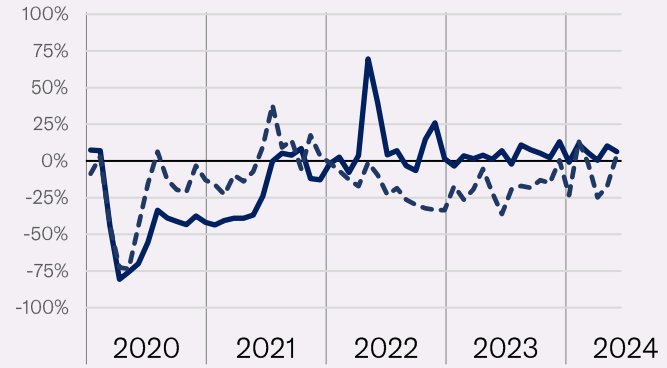
AUG-24
8.753 flights
+6% (vs. 2023)

YTD-24
61.353 flights
+4% (vs. 2023)



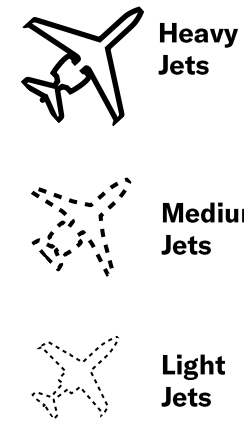
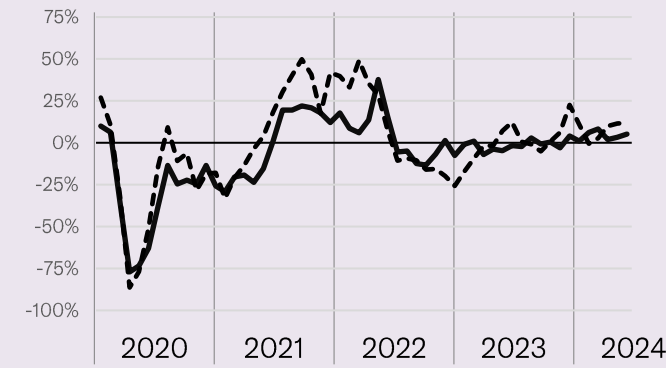
AUG-24
5.612 flights
+6% (vs. 2023)

YTD-24
39.978 flights
+4% (vs. 2023)



AUG-24
11.874 flights
+7% (vs. 2023)

YTD-24
79.267 flights
+5% (vs. 2023)

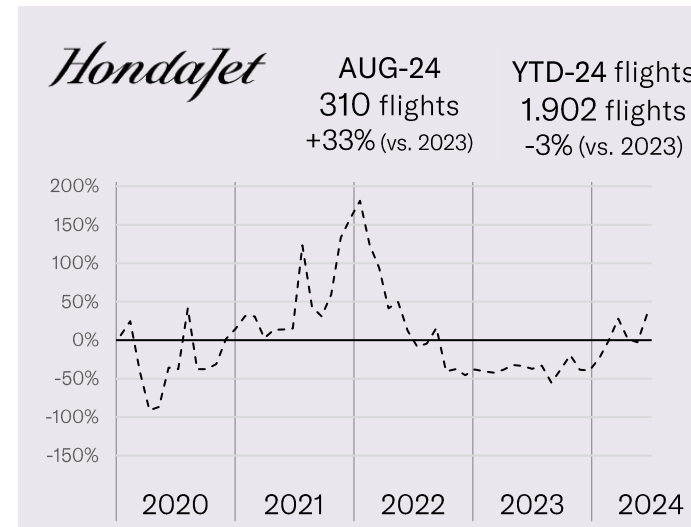
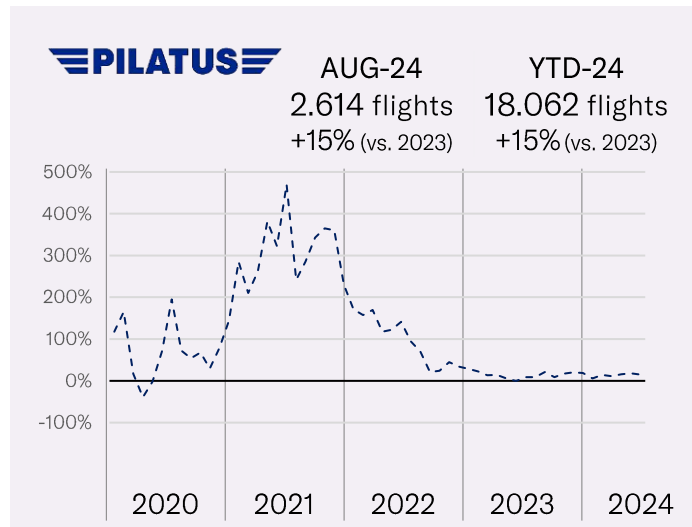
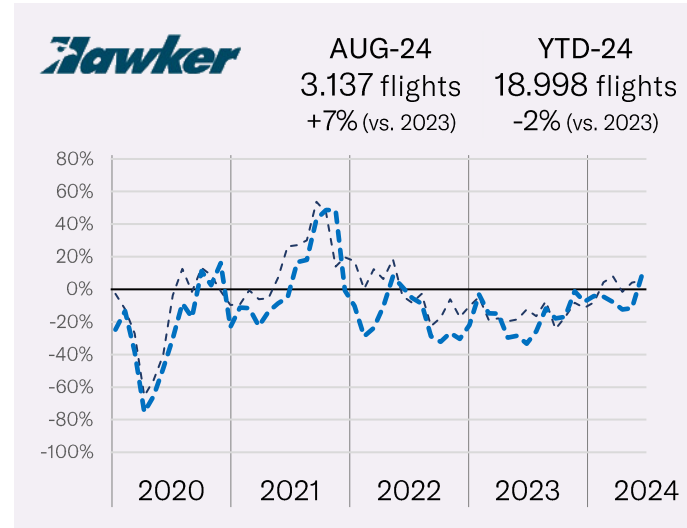
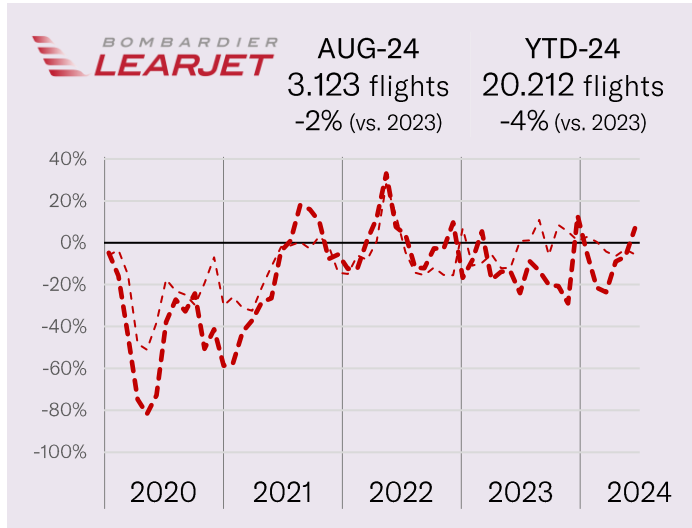


JET OEMS (2/2) – AUGUST 2024

MONTHLY TRAFFIC & MONTHLY GROWTH



EBAA TRAFFIC TRACKER - AUGUST 2024



**Heavy
Jets**



**Medium
Jets**

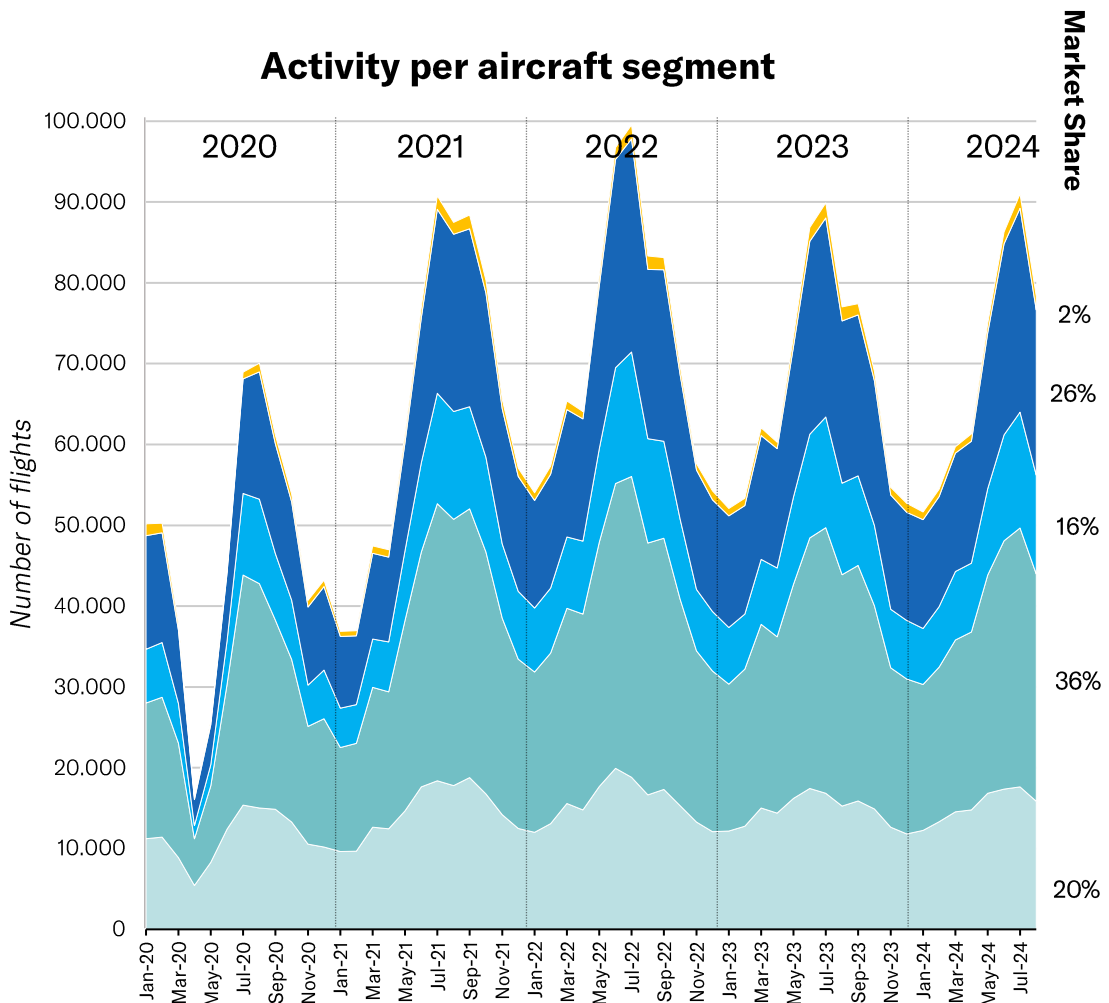


**Light
Jets**

BUSINESS AVIATION AIRPLANES – AUGUST 2024

MONTHLY TRAFFIC & MONTHLY GROWTH

EBAA TRAFFIC TRACKER - AUGUST 2024



Bizliners



Heavy Jets



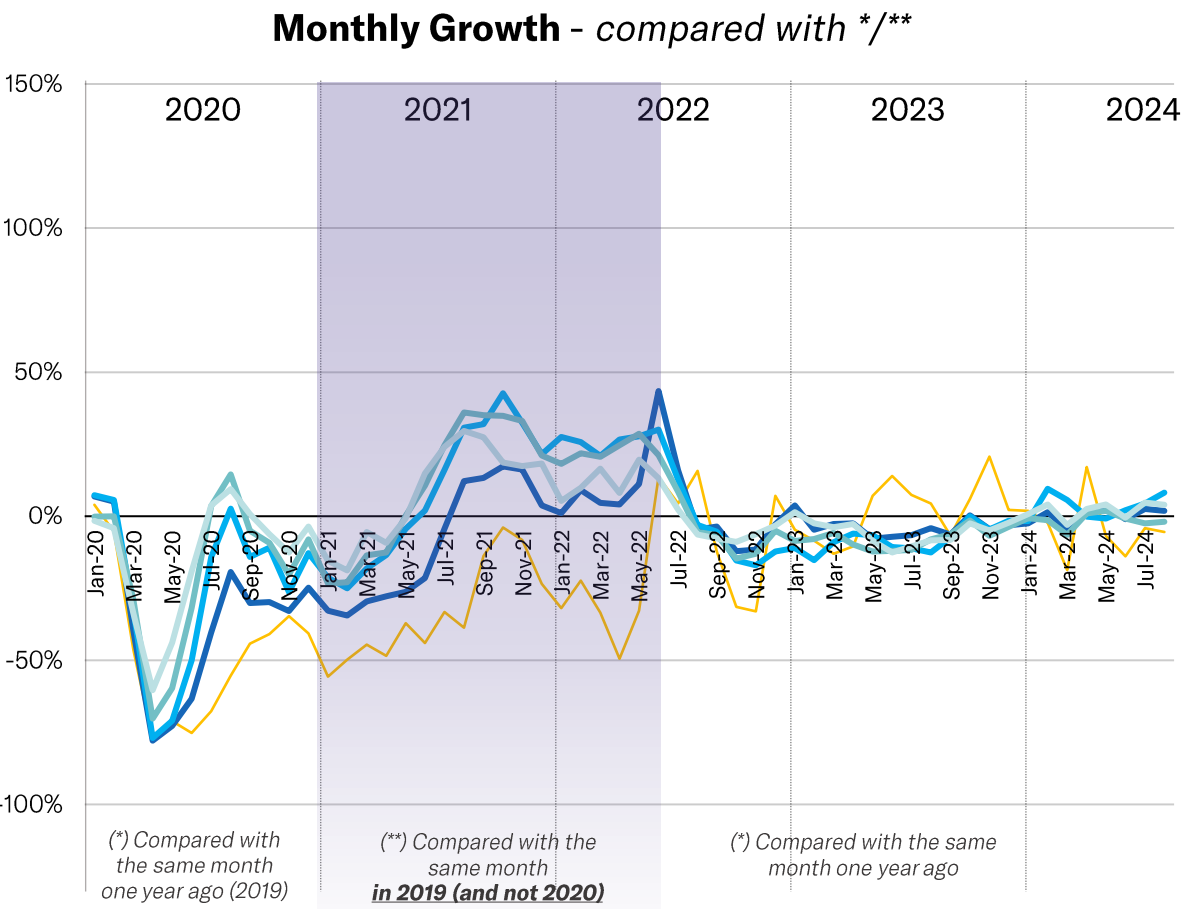
Medium Jets



Light Jets



Turboprops



(*) Compared with the same month one year ago (2019)

(**) Compared with the same month in 2019 (and not 2020)

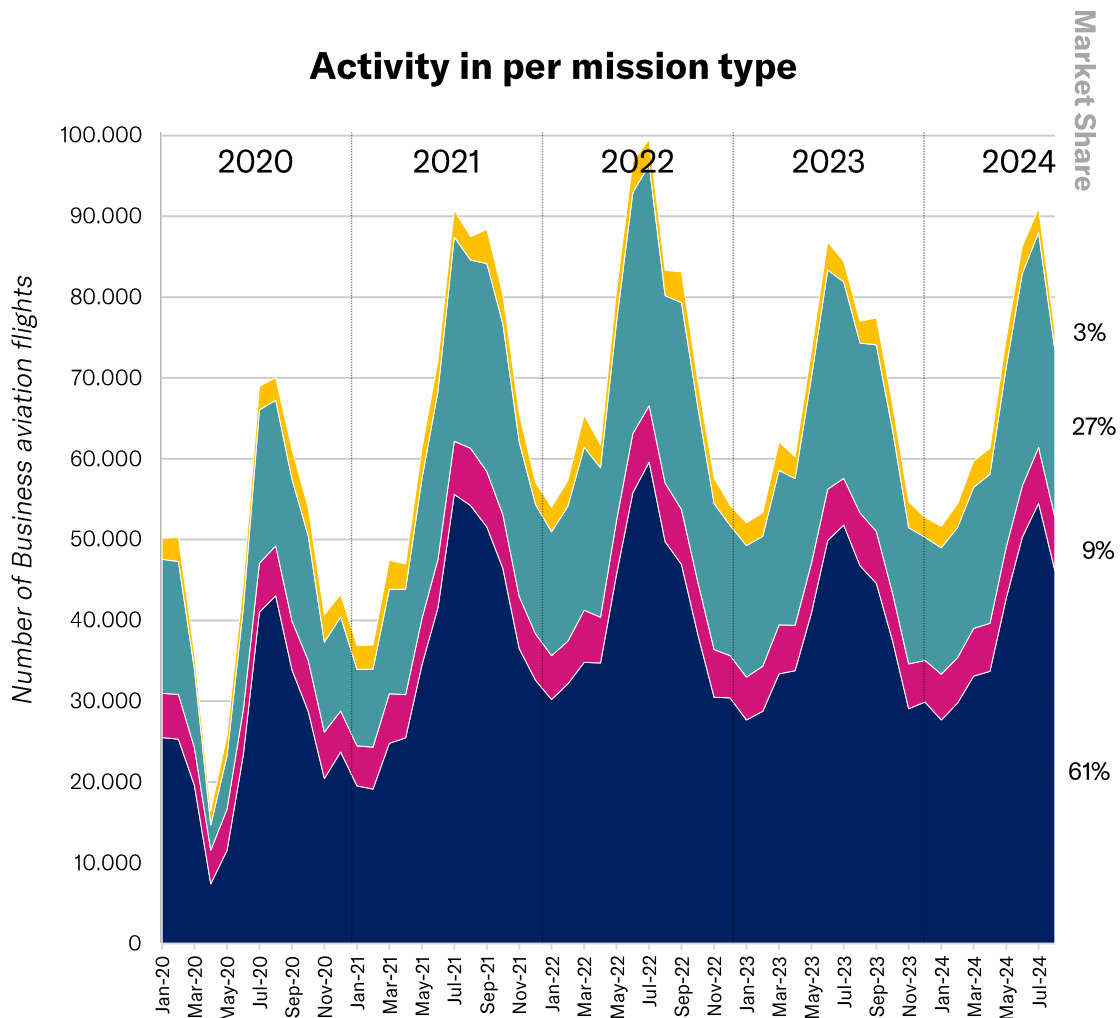
(*) Compared with the same month one year ago

BUSINESS AVIATION MISSIONS – AUGUST 2024

MONTHLY TRAFFIC & MONTHLY GROWTH

EBAA TRAFFIC TRACKER - AUGUST 2024

Activity in per mission type



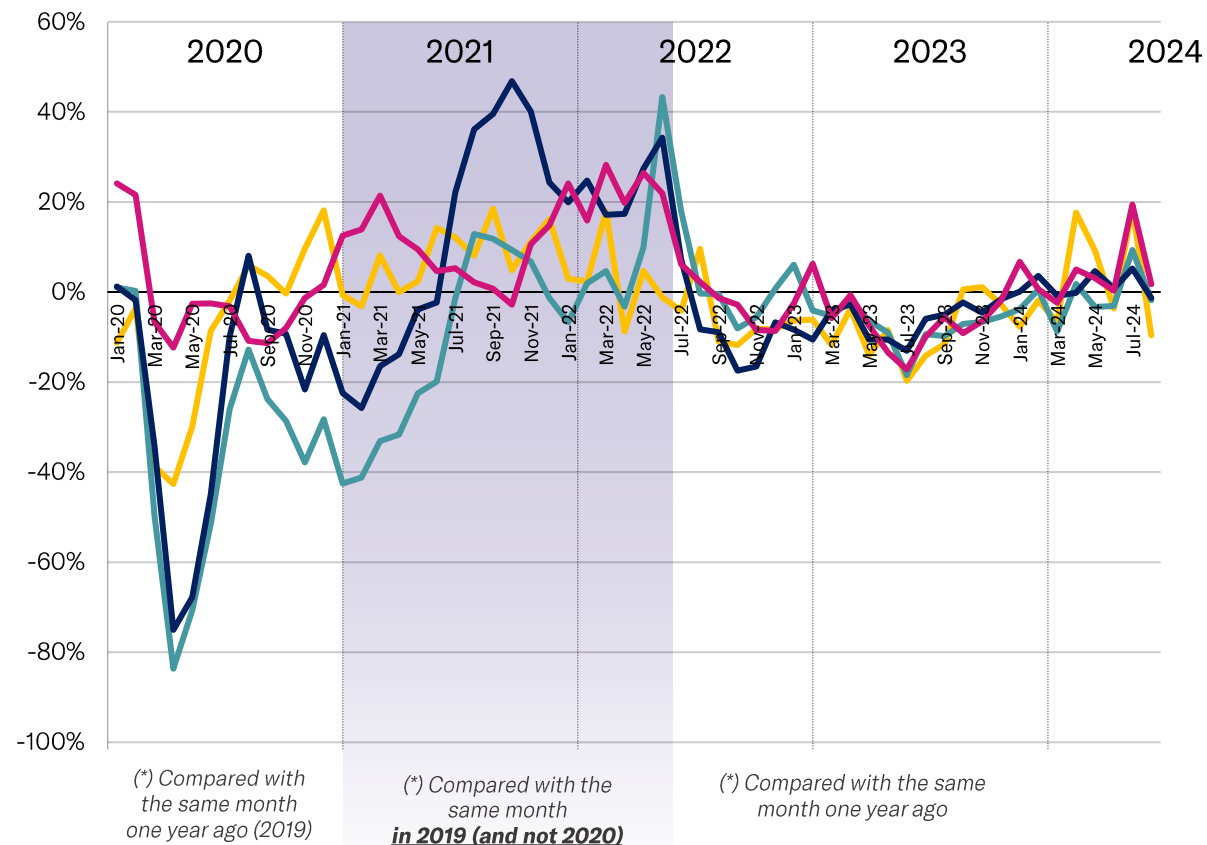
 **Commercial**

 **Non-commercial**

 **State/Diplomatic**

 **Medical/Special**

Monthly Growth - compared with */**



(*) Compared with the same month one year ago (2019)

(**) Compared with the same month in 2019 (and not 2020)

(*) Compared with the same month one year ago

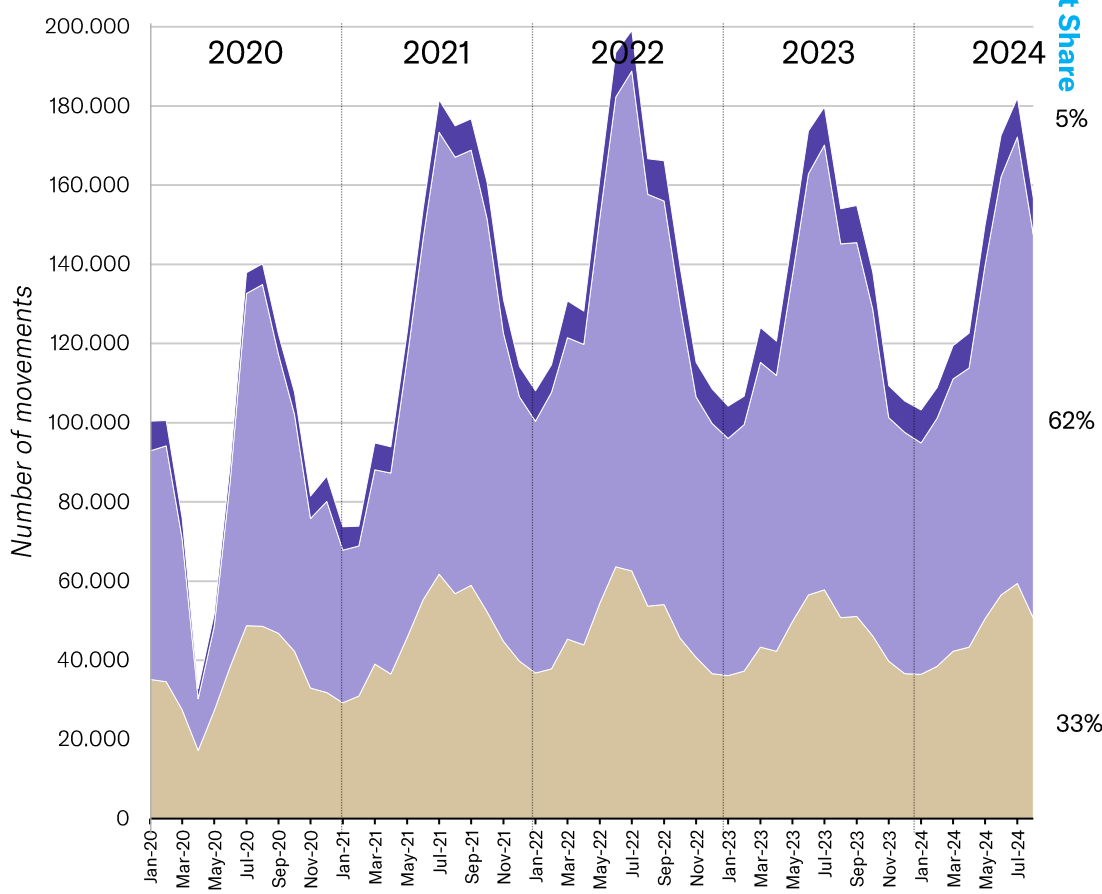
BUSINESS AVIATION ORIGINS & DESTINATIONS – AUGUST 2024

MONTHLY TRAFFIC & MONTHLY GROWTH



EBAA TRAFFIC TRACKER - AUGUST 2024

Activity per Origin-Destination



Extra-Europe

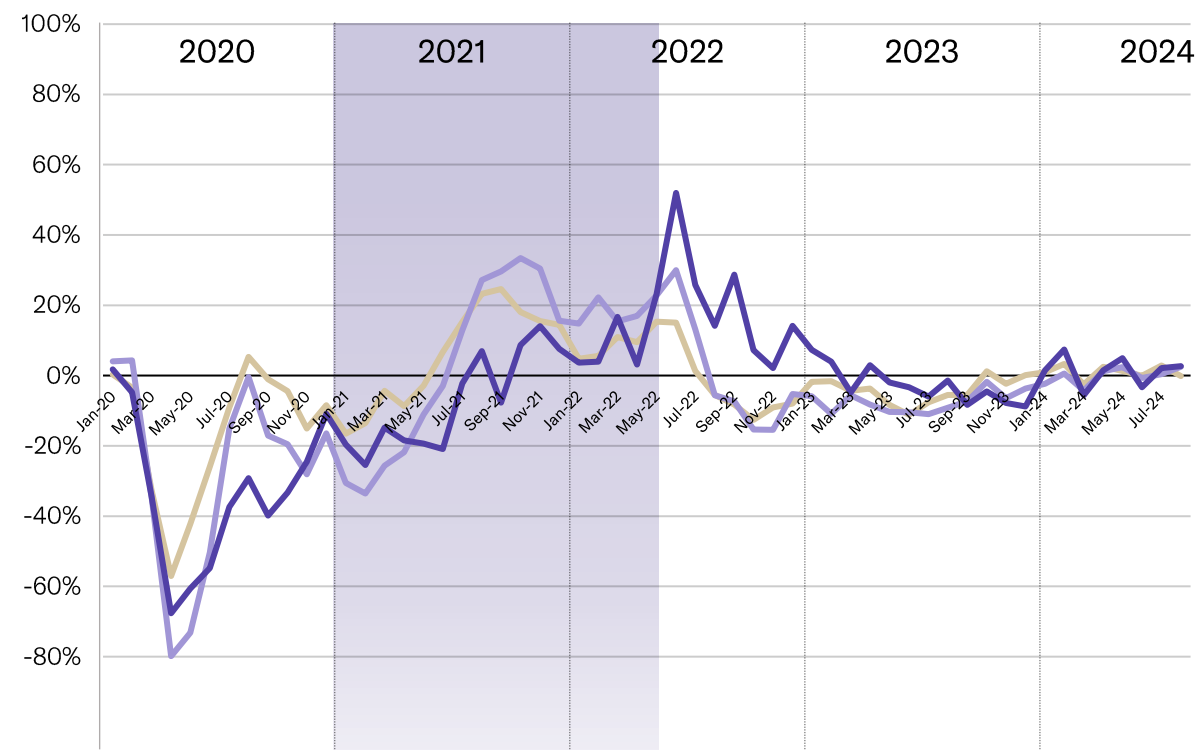


Intra-Europe



Domestic

Monthly Growth - compared with */**



(*) Compared with the same month one year ago (2019)

(*) Compared with the same month in 2019 (and not 2020)

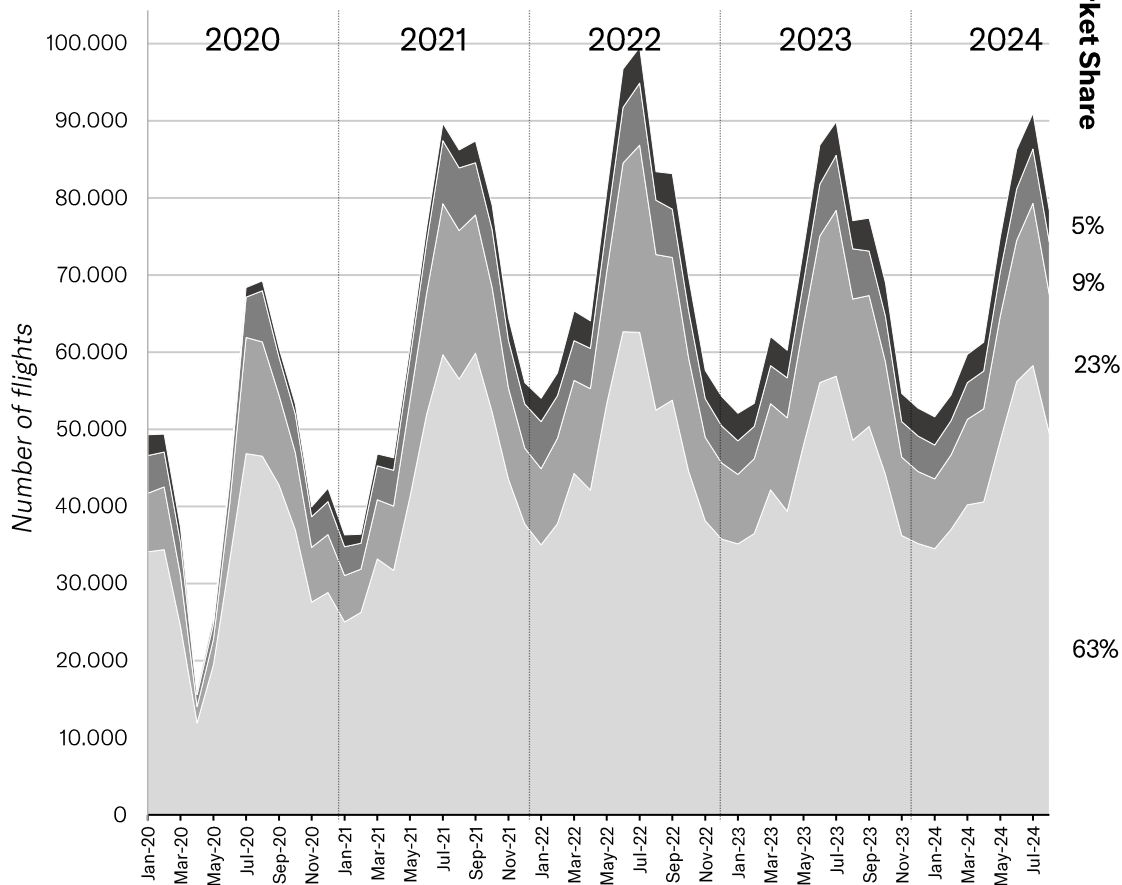
(*) Compared with the same month one year ago

BUSINESS AVIATION FLIGHT SECTOR – AUGUST 2024

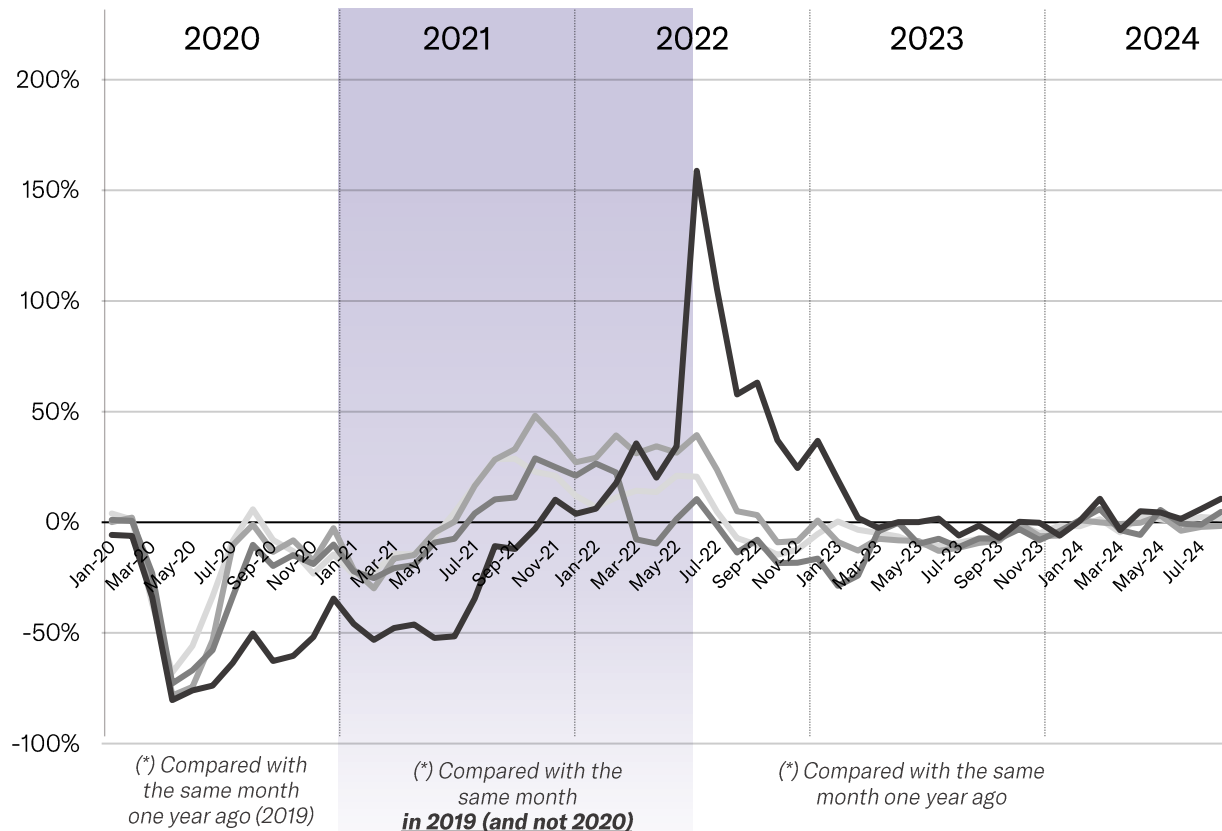
MONTHLY TRAFFIC & MONTHLY GROWTH



Activity per flight sector



Monthly Growth - compared with */**



Short Haul
(below 500nm / 1000km)



Short Haul
(below 1000nm / 2000km)



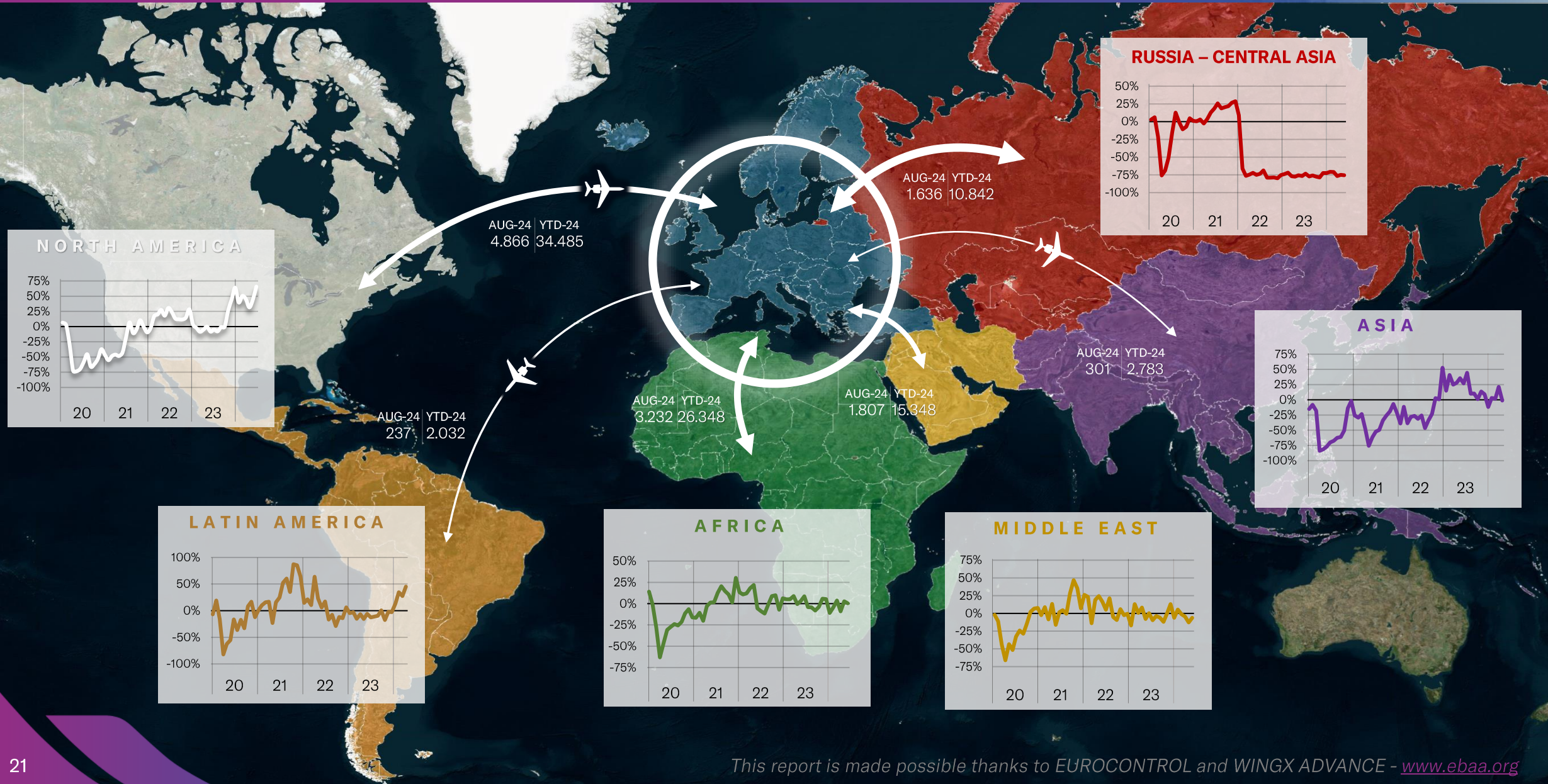
Medium Haul
(below 2500nm / 4700km)



Long Haul
(above 2500nm / 4700km)

EUROPEAN BUSINESS AVIATION INTERCONTINENTAL CONNECTIONS – AUGUST 2024

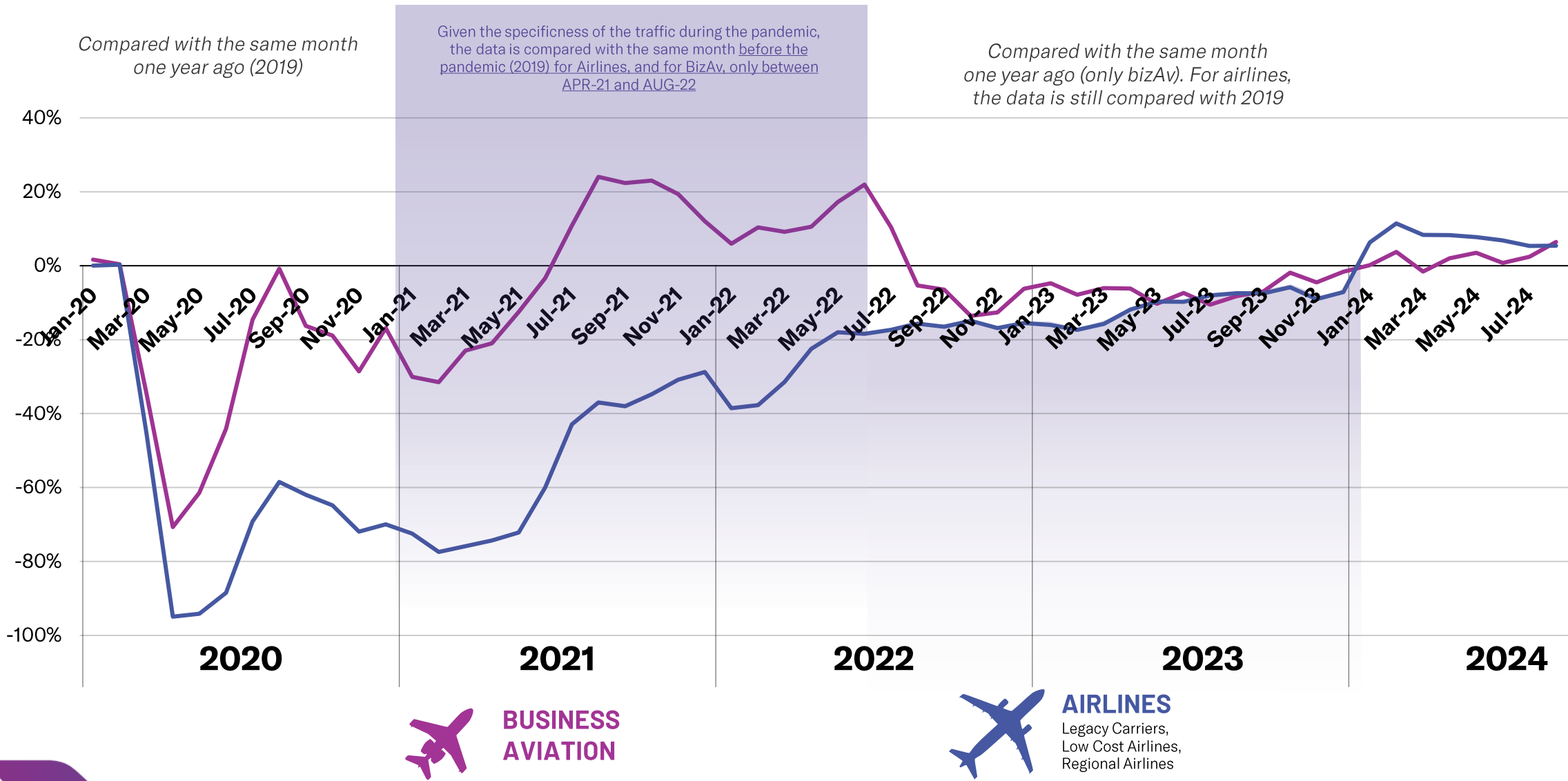
MONTHLY TRAFFIC & MONTHLY GROWTH



BUSINESS AVIATION VS. AIRLINES

MONTHLY TRAFFIC GROWTH

EBAA TRAFFIC TRACKER - AUGUST 2024

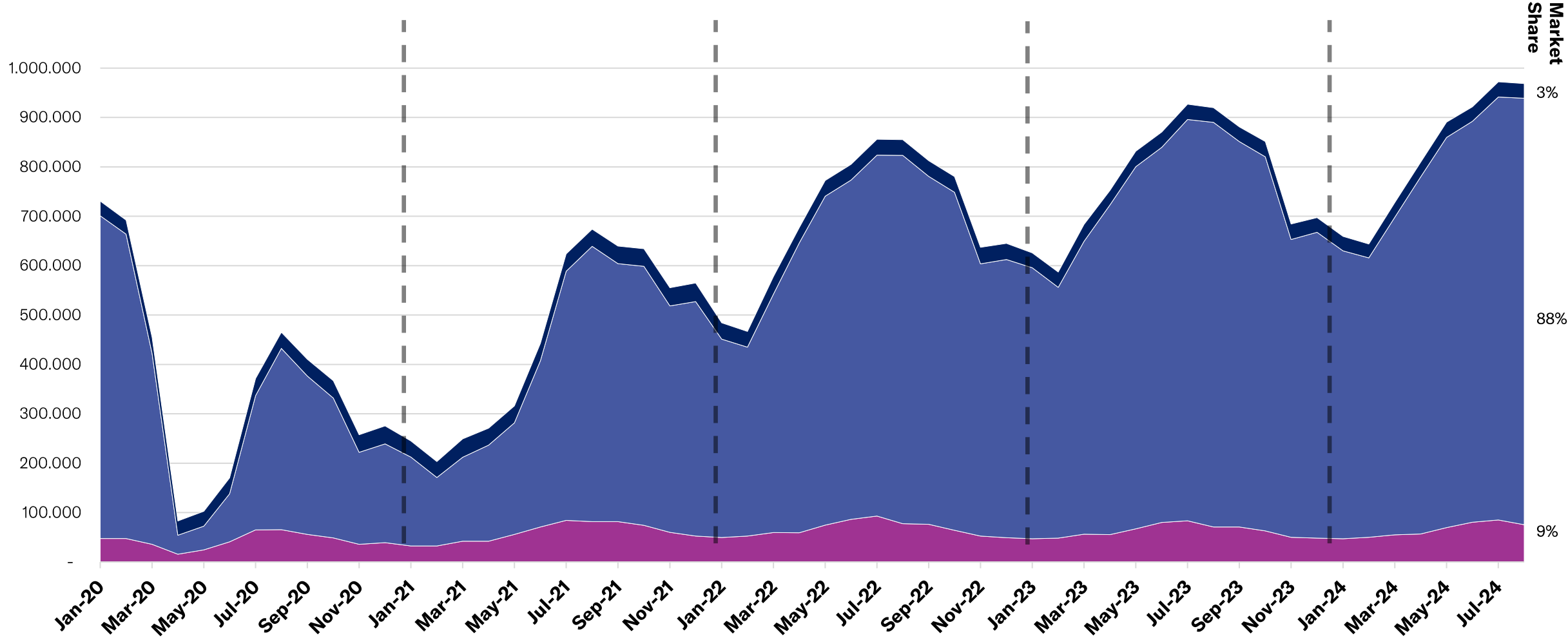


BUSINESS AVIATION VS. AIRLINES & CARGO

MONTHLY TRAFFIC MARKET SHARE



EBA TRAFFIC TRACKER - AUGUST 2024



BUSINESS AVIATION VS. AIRLINES (EUROPE)

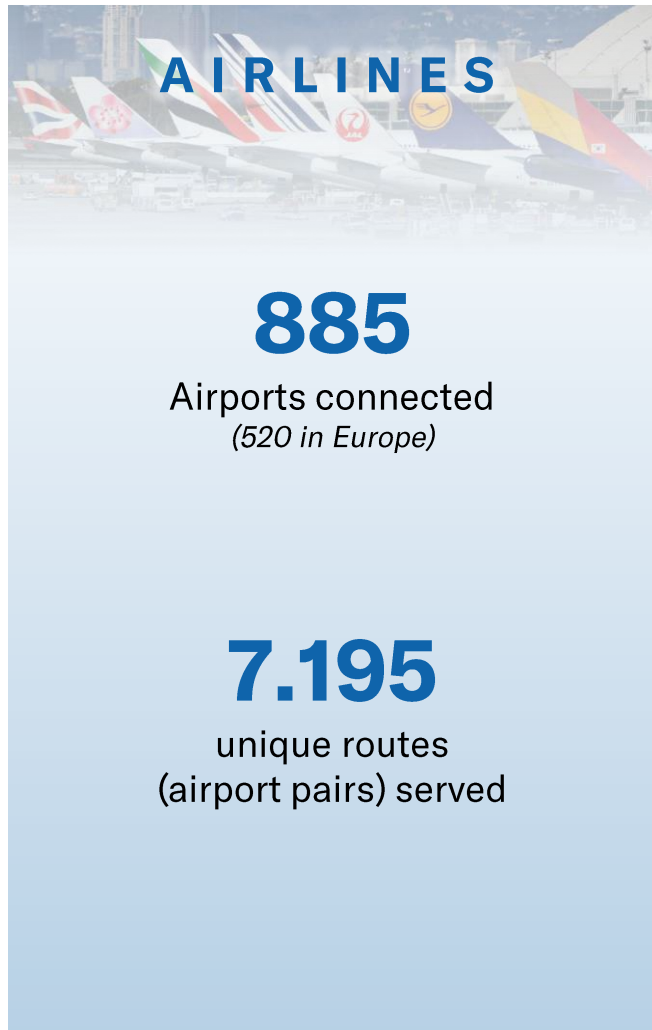
MONTHLY CONNECTIVITY COMPARISON – YTD 2024



Airports connected

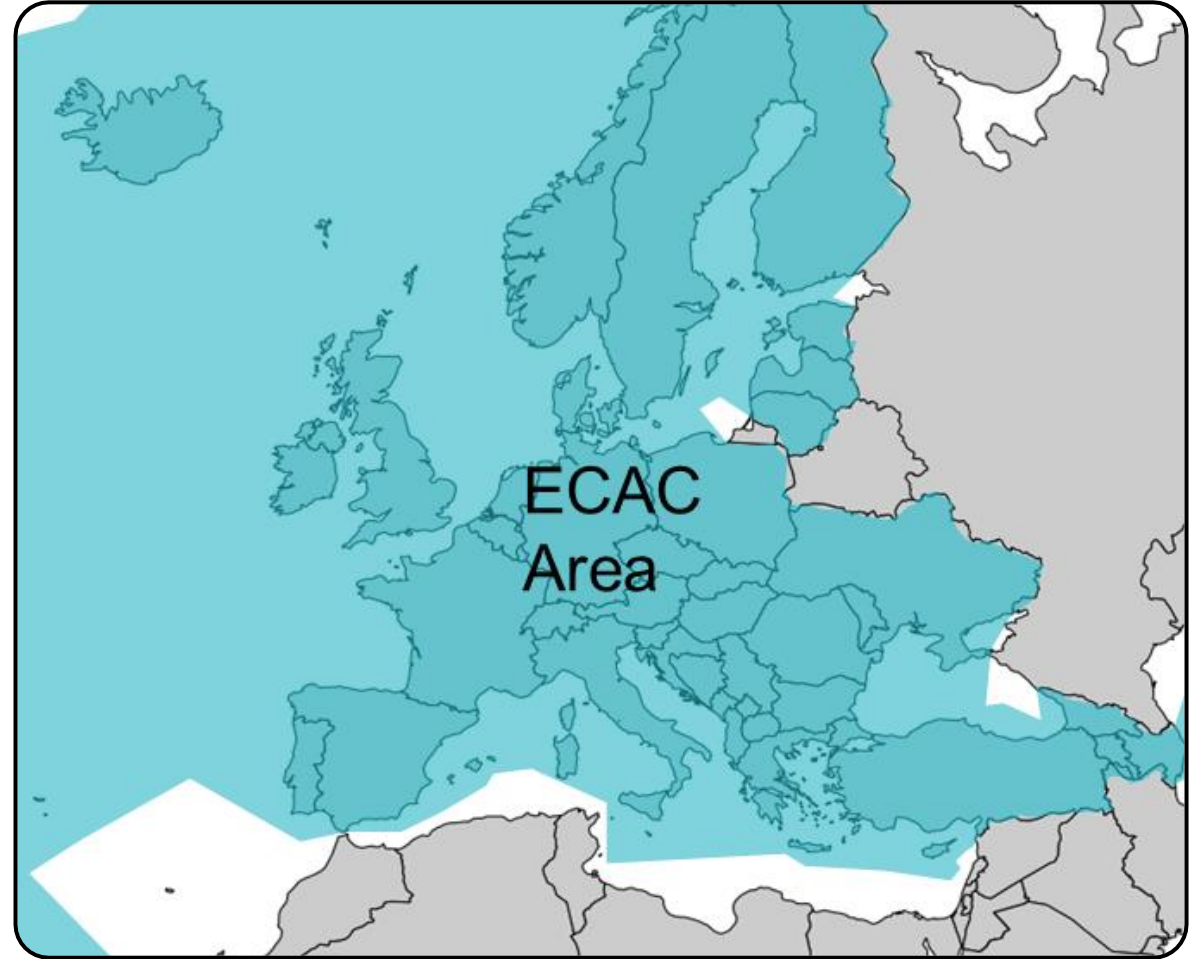
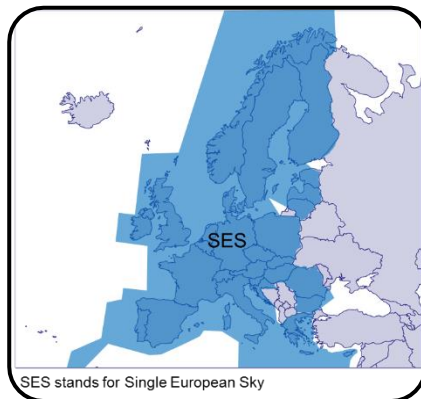
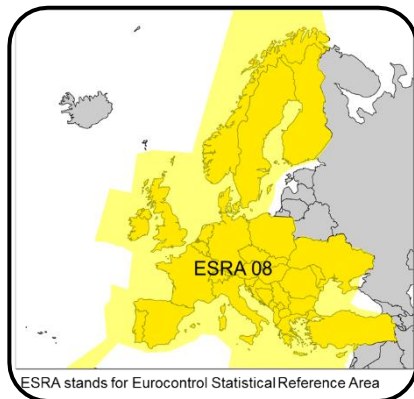
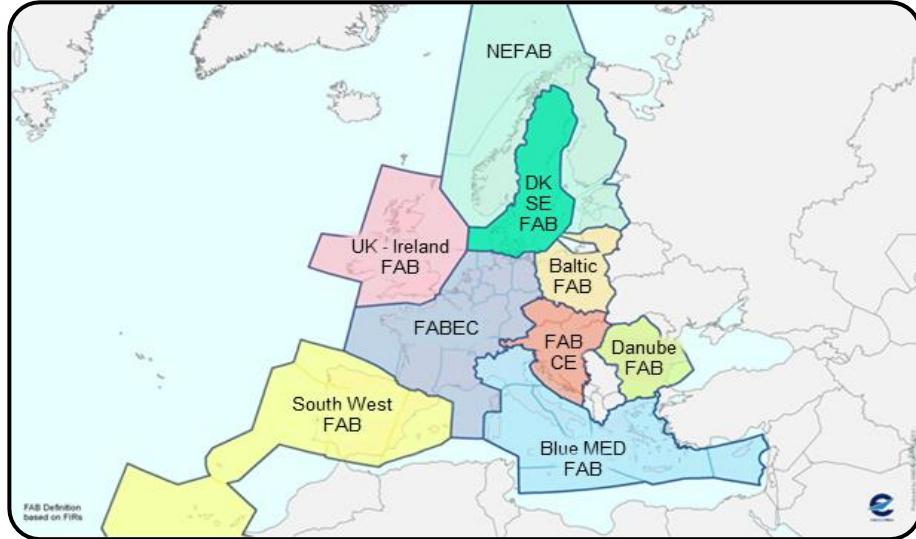


Unique routes served



- Airlines categories are defined by EUROCONTROL as : « mainline, low cost airlines and regional airlines)
- For airlines, routes below at least 1 connection a week are excluded from the analysis (*it is assumed that below at least 1 weekly connection, a route cannot be considered as a part of the scheduled air transport offer).*

AREAS



ECAC stands for European Civil Aviation Conference

The « Business Aviation » segment is defined by Eurocontrol as follows :

A318	Airbus A318	Airbus	Bizliner	flight type G only
A319	Airbus A319	Airbus	Bizliner	flight type G only
A320	Airbus A320	Airbus	Bizliner	flight type G only
ASTR	Gulfstream G100	Gulfstream	Midsize Jet	
B350	King Air 350	Hawker Beechcraft	Turboprop	flight type G and N only
B737	Boeing 737-700	Boeing	Bizliner	flight type G only
B738	Boeing 737-800	Boeing	Bizliner	flight type G only
B739	Boeing 737-900	Boeing	Bizliner	flight type G only
B748	Boeing 747-8I	Boeing	Bizliner	flight type G only
B77L	Boeing 777-200 Freighter	Boeing	Bizliner	flight type G only
B77W	Boeing 777-300ER	Boeing	Bizliner	flight type G only
B788	Boeing 787-8	Boeing	Bizliner	flight type G only
B789	Boeing 787-9	Boeing	Bizliner	flight type G only
BE10	KingAir 100	Hawker Beechcraft	Turboprop	
BE20	King Air 200	Hawker Beechcraft	Turboprop	
BE30	Super King Air 300	Hawker Beechcraft	Turboprop	
BE40	Hawker Beechjet 400	Hawker Beechcraft	Light Jet	
BE90	King Air 90	Hawker Beechcraft	Turboprop	
BE9L	King Air 90	Hawker Beechcraft	Turboprop	
BE9T	KingAir90	Hawker Beechcraft	Turboprop	
C208	Cessna 208 Caravan	Cessna	Turboprop	
C25A	Cessna Citation CJ2	Cessna	Light Jet	
C25B	Cessna Citation CJ3	Cessna	Light Jet	
C25C	Cessna Citation CJ4	Cessna	Light Jet	
C25M	Cessna M2	Cessna	Light Jet	
C425	Cessna Corsair	Cessna	Turboprop	
C441	Cessna Conquest	Cessna	Turboprop	
C500	Cessna Citation I	Cessna	Light Jet	
C501	Cessna Citation ISP	Cessna	Light Jet	
C510	Cessna Citation Mustang	Cessna	Light Jet	
C525	Cessna Citation CJ1	Cessna	Light Jet	
C550	Cessna Citation II	Cessna	Light Jet	
C551	Cessna Citation IISP	Cessna	Light Jet	
C55B	Cessna Citation Bravo	Cessna	Light Jet	
C560	Cessna Citation V	Cessna	Light Jet	
C56X	Cessna Citation Excel / XLS	Cessna	Light Jet	

C650	Cessna Citation III	Cessna	Midsize Jet	
C680	Citation Sovereign	Cessna	Midsize Jet	
C750	Cessna Citation X	Cessna	Midsize Jet	
CL30	Challenger 300 series	Bombardier	Midsize Jet	
CL35	Challenger 350	Bombardier	Midsize Jet	
CL60	Challenger 600 series	Bombardier	Heavy Jet	
CRJ2	Challenger 800-850	Bombardier	Heavy Jet	flight type G only
E135	Embraer RJ135	Embraer	Heavy Jet	flight type G only
E145	Embraer RJ145	Embraer	Heavy Jet	flight type G only
E190	Embraer 190	Embraer	Bizliner	flight type G only
E35L	Legacy 600 series	Embraer	Heavy Jet	
E50P	Embraer Phenom 100	Embraer	Light Jet	
E545	Legacy 450 / Praetor 500	Embraer	Midsize Jet	
E550	Embraer Legacy 500	Embraer	Midsize Jet	
E55P	Embraer Phenom 300	Embraer	Light Jet	flight type G and N only
E75L	Embraer RJ175	Embraer	Bizliner	flight type G only
EA50	Eclipse 500	Eclipse	Light Jet	
F2TH	Dassault Falcon 2000	Dassault	Heavy Jet	
F900	Dassault Falcon 900	Dassault	Heavy Jet	
FA10	Dassault Falcon 10/100	Dassault	Light Jet	
FA20	Dassault Falcon 20/200	Dassault	Midsize Jet	
FA50	Dassault Falcon 50	Dassault	Midsize Jet	
FA6X	Dassault Falcon 6X	Dassault	Heavy Jet	
FA7X	Dassault Falcon 7X	Dassault	Heavy Jet	
FA8X	Dassault Falcon 8X	Dassault	Heavy Jet	
G150	Gulfstream G150	Gulfstream	Midsize Jet	
G280	Gulfstream G280	Gulfstream	Midsize Jet	
GA5C	Gulfstream G500/550	Gulfstream	Heavy Jet	
GA6C	Gulfstream G600/650	Gulfstream	Heavy Jet	
GALX	Gulfstream G200	Gulfstream	Midsize Jet	
GL5T	Global 5000	Bombardier	Heavy Jet	
GL6T	Global 6000	Bombardier	Heavy Jet	
GLEX	Global Express / 6000	Bombardier	Heavy Jet	
GLF2	Gulfstream 2	Gulfstream	Heavy Jet	
GLF3	Gulfstream 3	Gulfstream	Heavy Jet	
GLF4	Gulfstream G300/450	Gulfstream	Heavy Jet	
GLF5	Gulfstream G500/550	Gulfstream	Heavy Jet	

GLF6	Gulfstream G600/650	Gulfstream	Heavy Jet	flight type G and N only
H25B	Hawker 700-900	Hawker Beechcraft	Midsize Jet	
H25C	British Aerospace 125-1000	British Aerospace	Light Jet	
HA4T	Hawker 4000	Hawker Beechcraft	Midsize Jet	
HDJT	HondaJet	Honda	Light Jet	
HF20	Hansa Jet	Hamburger Flugzeugbau	Light Jet	
LJ23	Learjet 23	Bombardier	Light Jet	
LJ24	Learjet 24	Bombardier	Light Jet	
LJ25	Learjet 25	Bombardier	Light Jet	
LJ28	Learjet 28	Bombardier	Light Jet	
LJ31	Learjet 31	Bombardier	Light Jet	
LJ35	Learjet 35	Bombardier	Light Jet	
LJ40	Learjet 40	Bombardier	Light Jet	
LJ45	Learjet 45	Bombardier	Light Jet	
LJ55	Learjet 55	Bombardier	Midsize Jet	
LJ60	Learjet 60	Bombardier	Midsize Jet	
LJ70	Learjet 70	Bombardier	Midsize Jet	
LJ75	Learjet 75	Bombardier	Midsize Jet	
P180	Piaggio P180 Avanti	Piaggio Aerospace	Turboprop	
PAY2	Piper Cheyenne 2	Piper Aircraft	Turboprop	
PAY3	Piper Cheyenne 3	Piper Aircraft	Turboprop	
PAY4	Piper Cheyenne 400	Piper Aircraft	Turboprop	
PC12	Pilatus PC-12	Pilatus	Turboprop	
PC24	Pilatus PC24	Pilatus	Light Jet	
PRM1	Premier 1	Hawker Beechcraft	Light Jet	
SBR1	Sabreliner	NA Rockwell	Light Jet	
SBR2	Sabreliner	NA Rockwell	Light Jet	
SJ30	Syberjet SJ30	SyberJet	Light Jet	
TBM7	Socata TBM 700	Daher-Socata	Turboprop	
TBM8	Socata TBM 850	Daher-Socata	Turboprop	
TBM9	Socata TBM 900 series	Daher-Socata	Turboprop	
WW23	1123 Westwind	IAI	Midsize Jet	
WW24	1124 Westwind	IAI	Midsize Jet	
EA50	Eclipse 500	Eclipse	Light Jet	

The list is permanently updated ...

DISCLAIMER

This report is provided by EBAA for information purposes only and no representation, warranties or other assurances, express or implied, are given as to the quality, accuracy, or completeness of the information contained in, or provided in connection with the report.

Recipients of this report must determine for themselves whether any matters referred to are suitable for their purposes. Neither EBAA nor any of their affiliates, agents, partners, representatives, consultants or any other company, firm or organisation involved in producing this report, nor any of their successors or assign or any employees, officer or director of any of them shall have any liability with respect to the use or reliance on the report by any person, irrespective of any negligence, omission or default, on the part of the foregoing persons.

Any reproduction or publication of this report, in whole or in part, is strictly forbidden without the written consent of EBAA. Please write to communications@ebaa.org for questions related to the use of this report.

For more information, please contact:

Square de Meeûs 37
BE - 1000 Brussels - Belgium

Phone: +32 2 318 28 00
Fax: +32 2 318 28 01

Follow us



@EUROPEANBUSINESSAVIATIONASSOCIATION



@EBAAORG



EUROPEAN BUSINESS AVIATION ASSOCIATION



@EUROPEAN_BUSINESS_AVIATION

www.ebaa.org

