

BUSINESS AVIATION TRAFFIC TRACKER EUROPE

MAY 2024



EUROPEAN BUSINESS AVIATION ASSOCIATION



DEPARTURES, ARRIVALS, INTERNALS AND OVERFLIGHTS (DAIO) REPORT

TOTAL BUSINESS AVIATION FLIGHTS



Business Aviation (ECAC Area)

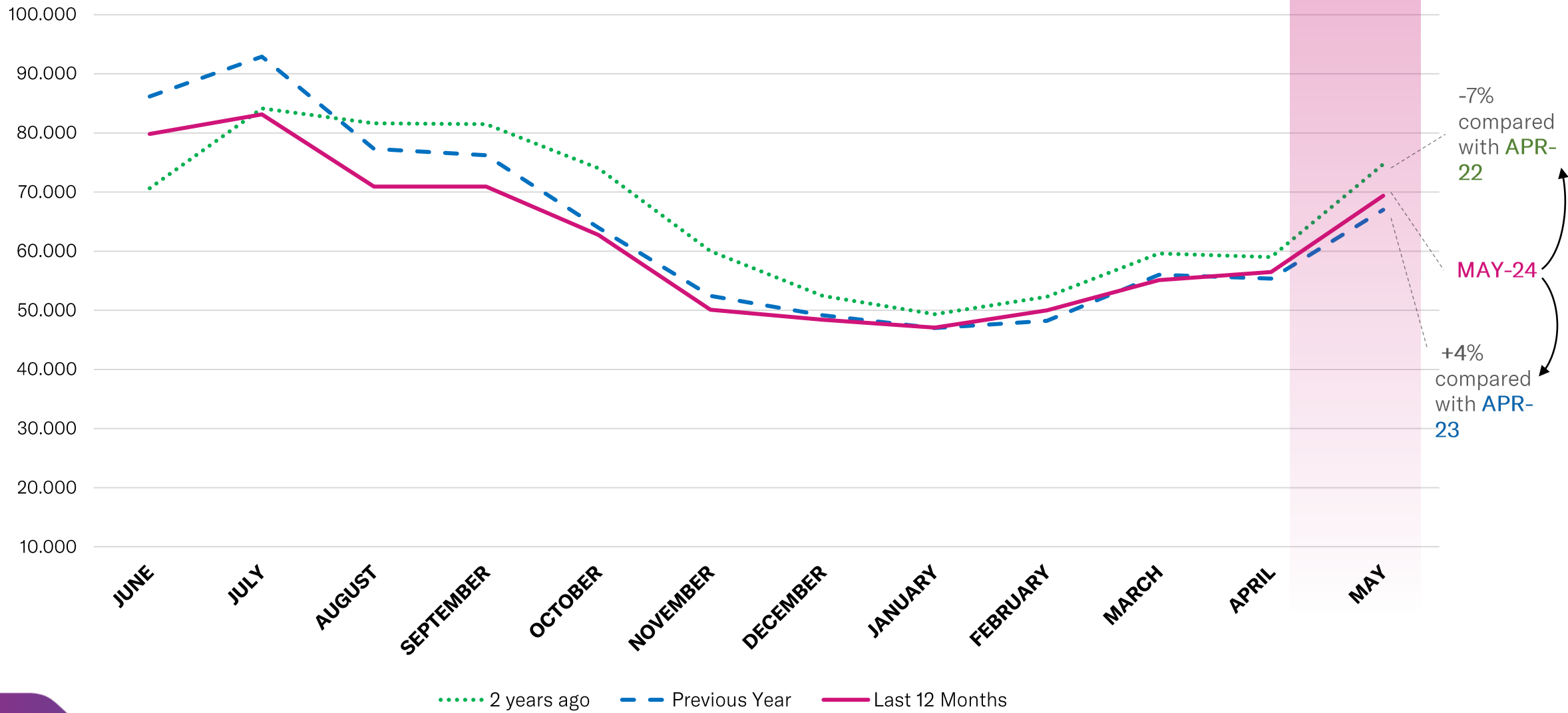
	ARRIVAL			DEPARTURE			INTERNAL			OVERFLIGHT			PREVIOUS YEAR	CURRENT YEAR	GROWTH
	Previous Year	Current Year	Growth	Previous Year	Current Year	Growth	Previous Year	Current Year	Growth	Previous Year	Current Year	Growth			
Jun 2023	4.306	4.269	-0,9%	4.022	3.922	-2,5%	77.277	71.129	-8,0%	352	333	-5,4%	85.957	79.653	-7,3%
Jul 2023	4.265	3.765	-11,7%	4.291	3.889	-9,4%	83.853	75.177	-10,3%	291	324	11,3%	92.700	83.155	-10,3%
Aug 2023	3.692	3.486	-5,6%	3.741	3.510	-6,2%	69.432	63.694	-8,3%	269	253	-5,9%	77.134	70.943	-8,0%
Sep 2023	4.033	3.468	-14,0%	3.928	3.416	-13,0%	67.741	63.684	-6,0%	386	369	-4,4%	76.088	70.937	-6,8%
Oct 2023	3.649	3.629	-0,5%	3.807	3.744	-1,7%	55.860	55.751	-0,2%	504	429	-14,9%	63.820	63.553	-0,4%
Nov 2023	3.234	3.072	-5,0%	3.194	3.020	-5,4%	45.443	43.512	-4,2%	482	482	0,0%	52.353	50.086	-4,3%
Dec 2023	3.001	2.875	-4,2%	3.116	3.023	-3,0%	42.414	41.932	-1,1%	611	560	-8,3%	49.142	48.390	-1,5%
Jan 2024	3.036	3.250	7,0%	2.825	3.041	7,6%	40.633	40.239	-1,0%	462	556	20,3%	46.956	47.086	0,3%
Feb 2024	2.642	3.025	14,5%	2.578	3.006	16,6%	42.543	43.497	2,2%	379	482	27,2%	48.142	50.010	3,9%
Mar 2024	3.315	3.267	-1,4%	3.257	3.270	0,4%	48.909	48.026	-1,8%	469	541	15,4%	55.950	55.104	-1,5%
Apr 2024	3.232	3.474	7,5%	3.069	3.356	9,4%	48.589	49.083	1,0%	422	553	31,0%	55.312	56.466	2,1%
May 2024	3.610	3.989	10,5%	3.374	3.642	7,9%	59.614	61.167	2,6%	422	581	37,7%	67.020	69.379	3,5%
Grand Total	42.015	41.569	-1,1%	41.202	40.839	-0,9%	682.308	656.891	-3,7%	5.049	5.463	8,2%	770.574	744.762	-3,3%

EBAA TRAFFIC TRACKER - MAY 2024

DEPARTURES, ARRIVALS, INTERNALS AND OVERFLIGHTS (DAIO) REPORT

TOTAL BUSINESS AVIATION FLIGHTS

EBAA TRAFFIC TRACKER - MAY 2024

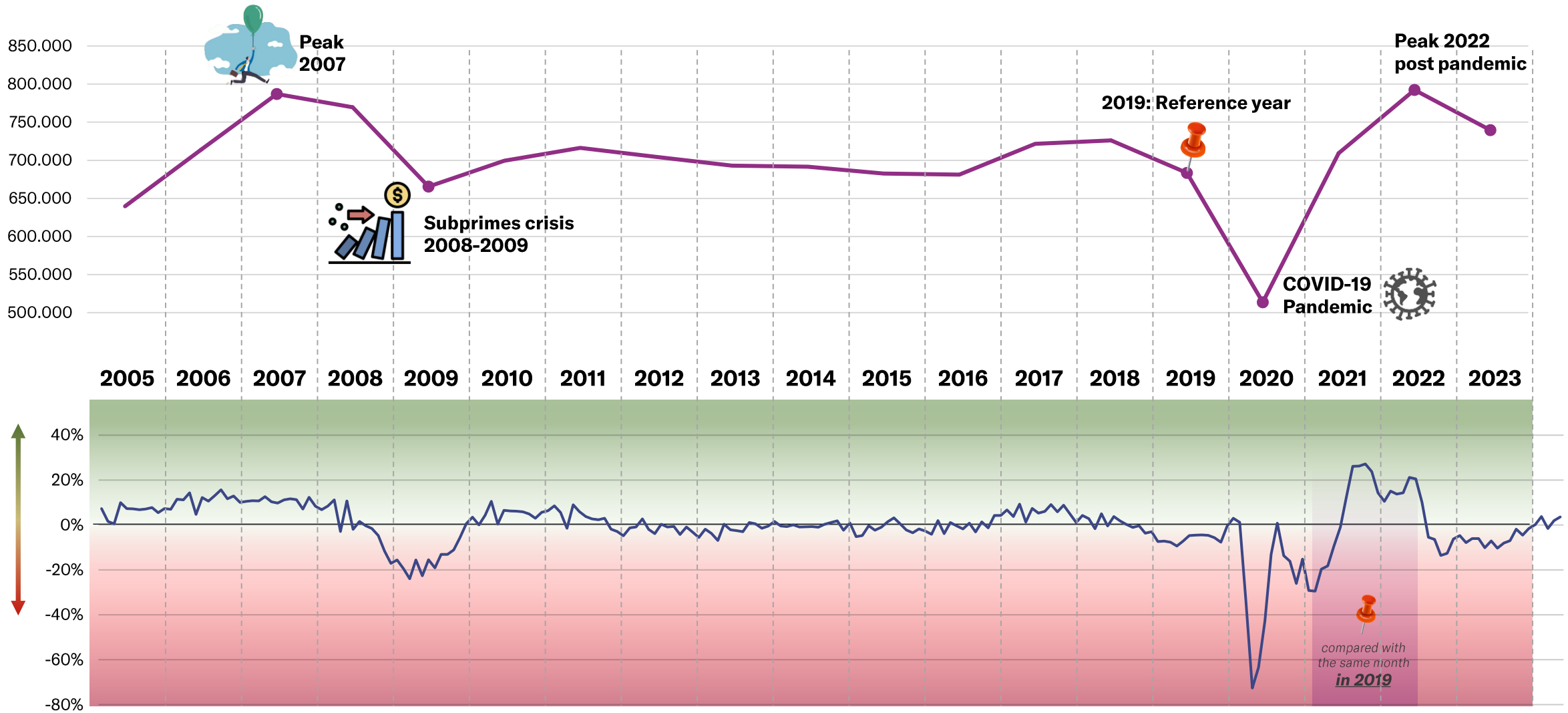


BUSINESS AVIATION IN EUROPE : 2005 – NOW

MONTHLY ACTIVITY AND GROWTH



EBAA TRAFFIC TRACKER - MAY 2024



EUROPEAN STATES – STATE OF PLAY

« YEAR-TO-DATE » details in Europe (flights from january onwards)

STATE OF PLAY - YTD (from january onwards)

	MONTH CURRENT YEAR	MONTH GROWTH	YTD CURRENT YEAR	YTD GROWTH
FRANCE	24.172	-1%	91.463	-4%
UNITED KINGDOM	19.413	2%	78.064	0%
GERMANY	15.160	-8%	67.544	-6%
ITALY	15.024	4%	50.498	4%
SPAIN	11.119	10%	42.130	6%
SWITZERLAND	8.309	2%	40.913	-3%
TURKEY	4.537	9%	18.877	4%
NORWAY	3.503	1%	16.554	5%
AUSTRIA	3.458	-7%	16.148	-2%
SWEDEN	3.417	-5%	16.118	-6%
GREECE	3.809	27%	11.158	14%
BELGIUM	2.572	-7%	10.872	-4%
NETHERLANDS	2.580	-6%	10.753	-10%
POLAND	2.018	0%	8.717	-3%
CZECH REPUBLIC	1.938	3%	8.155	6%
PORTUGAL	1.874	-11%	7.134	-9%
IRELAND	1.770	7%	6.002	-2%
DENMARK	1.347	-1%	5.818	1%
ROMANIA	1.270	3%	5.592	17%
FINLAND	1.069	-10%	5.441	-7%
HUNGARY	989	6%	3.896	2%
CROATIA	1.244	-1%	3.486	-6%
CYPRUS	823	10%	3.450	17%
SLOVAKIA	710	3%	2.928	2%
LUXEMBOURG	705	12%	2.778	-2%
SERBIA	548	-19%	2.755	-6%
BULGARIA	540	3%	2.151	10%
MALTA	493	13%	1.787	1%
SLOVENIA	382	9%	1.462	13%
ICELAND	425	29%	1.446	21%
MONTENEGRO	377	36%	999	13%
ESTONIA	267	0%	879	3%
LITHUANIA	265	0%	876	-12%
LATVIA	218	-4%	750	-7%
BOSNIA AND HERZEGOVINA	162	15%	622	14%
ALBANIA	133	4%	509	16%
MOLDOVA	112	29%	488	31%
MACEDONIA	63	-34%	276	-21%
UKRAINE	-	-	-	-

EBAA TRAFFIC TRACKER - MAY 2024

TOP 10 ACTIVE AIRPORTS – MAY 2024

AVERAGE DAILY BUSINESS AVIATION DEPARTURES



EBAA TRAFFIC TRACKER - MAY 2024

RANK	ICAO CODE	NAME	MONTH CURRENT YEAR	MONTH GROWTH	YTD CURRENT YEAR	YTD GROWTH
1	LFPB	Paris Le Bourget	79,9	-1,4%	66,7	-5,7%
2	LFMN	Nice	70,2	6,1%	40,2	1,7%
3	LSGG	Geneva	51,2	6,2%	41,5	-5,8%
4	EGGW	London Luton	43,3	13,4%	33,6	0,3%
5	EGLF	Farnborough	42,5	-1,2%	34,8	-4,4%
6	LIML	Milan Linate	38,2	1,0%	30,8	0,1%
7	LSZH	Zurich	36,2	-3,3%	32,3	-4,8%
8	EGKB	London Biggin Hill	29,5	-4,3%	24,9	-4,9%
9	LEPA	Palma de Mallorca	29,3	4,2%	19,0	1,9%
10	LFMD	Cannes	27,9	16,0%	13,2	-2,8%

TOP 30 AIRPORTS – STATE OF PLAY

« YEAR-TO-DATE » details in Europe (flights from january onwards)

STATE OF PLAY - YTD (from january onwards)

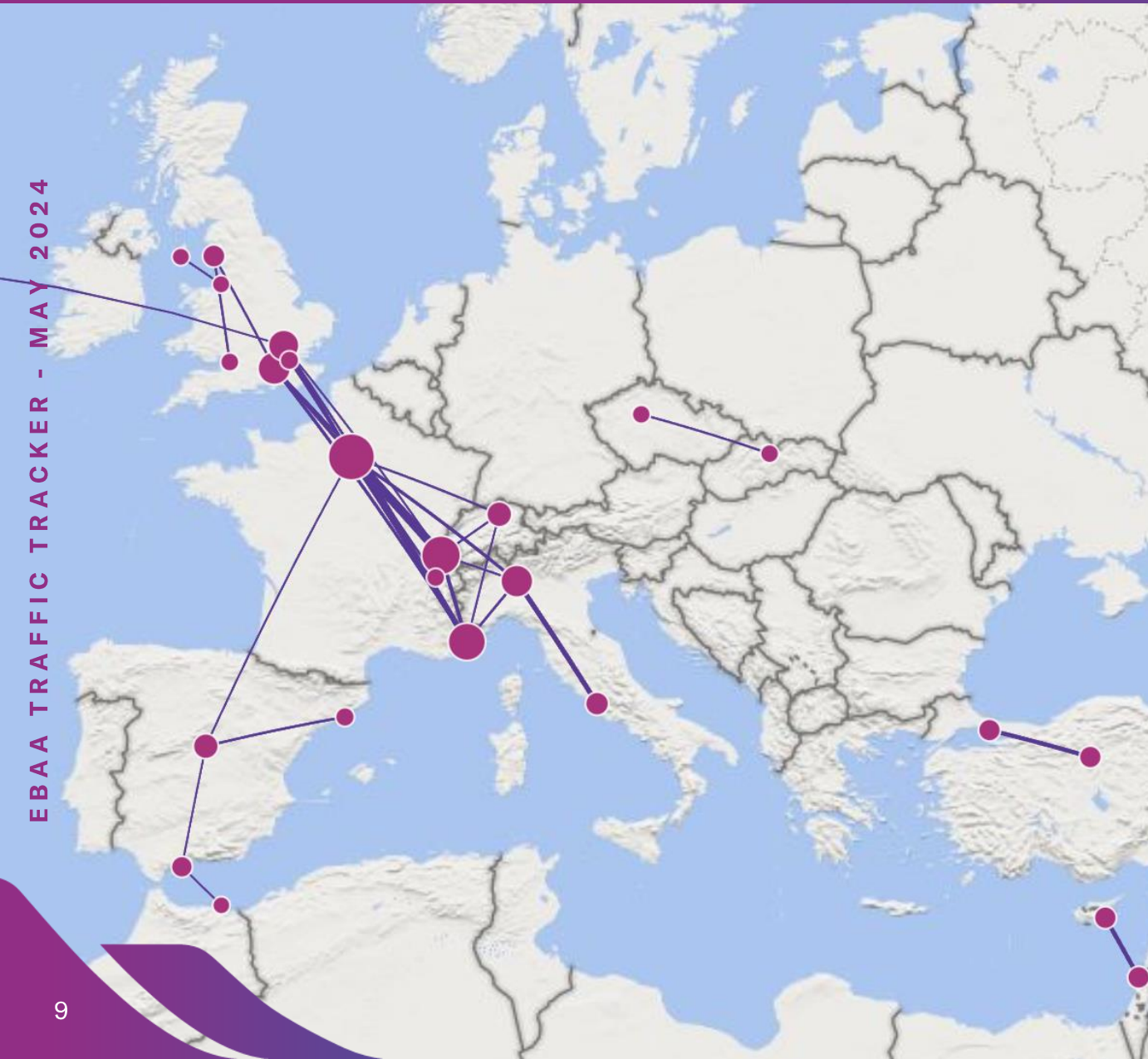
	MONTH CURRENT YEAR	MONTH GROWTH	YTD CURRENT YEAR	YTD GROWTH
🇫🇷 PARIS LE BOURGET	5.054	-3%	20.853	-5%
🇨🇭 GENEVA INTERNATIONAL	3.313	6%	13.409	-4%
🇫🇷 NICE CÔTE D'AZUR	4.502	6%	12.614	3%
🇬🇧 FARNBOROUGH	2.715	-1%	10.925	-3%
🇬🇧 LONDON LUTON	2.678	11%	10.549	2%
🇨🇭 ZURICH	2.328	-4%	10.188	-4%
🇮🇹 MILANO LINATE	2.452	1%	9.624	1%
🇬🇧 LONDON BIGGIN HILL	1.894	-3%	7.778	-4%
🇮🇹 ROMA CIAMPINO	1.696	-2%	6.512	4%
🇹🇷 ISTANBUL ATATÜRK	1.563	40%	6.491	23%
🇪🇸 MADRID BARAJAS	1.546	11%	6.430	12%
🇪🇸 PALMA DE MALLORCA	1.911	9%	5.951	4%
🇨🇪 PRAGUE VACLAV HAVEL	1.255	0%	5.334	4%
🇳🇱 AMSTERDAM SCHIPHOL	1.304	-15%	5.079	-17%
🇩🇪 BERLIN SCHÖNEFELD	1.149	-9%	5.079	-6%
🇦🇹 WIEN SCHWECHAT	1.244	-3%	5.033	-5%
🇪🇸 MALAGA COSTA DEL SOL	1.273	2%	5.015	1%
🇩🇪 MÜNCHEN	1.111	-10%	4.907	-5%
🇬🇷 ATHENS INTERNATIONAL	1.420	18%	4.716	19%
🇪🇸 BARCELONA	1.176	7%	4.684	9%
🇫🇷 CANNES MANDELIEU	1.772	16%	4.100	-3%
🇨🇭 SION	444	19%	3.827	6%
🇬🇧 LONDON STANSTED	950	-6%	3.811	0%
🇦🇹 SALZBURG W. A. MOZART	731	-18%	3.675	-3%
🇩🇪 STUTTGART	711	-21%	3.669	-6%
🇩🇪 HAMBURG	964	-7%	3.634	-14%
🇩🇪 KÖLN BONN	767	-8%	3.368	0%
🇫🇷 CHAMBERY	154	108%	3.319	-4%
🇬🇧 RAF NORTHOLT	891	26%	3.301	10%
🇩🇪 DUSSELDORF	574	-31%	3.130	-9%

TOP 30 BUSINESS AVIATION ROUTES – STATE OF PLAY

« YEAR-TO-DATE » details in Europe (flights from january onwards)



EBAA TRAFFIC TRACKER - MAY 2024



AIRPORT 1		AIRPORT 2		YTD CURRENT YEAR	YTD GROWTH(*)
LSGG	Geneva International	LFPB	Paris Le Bourget	1.464	-2%
LFMN	Nice Côte d'Azur	LFPB	Paris Le Bourget	933	1%
LIRA	Roma Ciampino	LIML	Milano Linate	823	14%
LLBG	Tel Aviv International	LCLK	Larnaka International	716	62%
LTBA	Istanbul Atatürk	LTAC	Ankara Esenboğa	701	32%
LFMN	Nice Côte d'Azur	LSGG	Geneva International	619	-6%
LFPB	Paris Le Bourget	EGLF	Farnborough	555	-10%
LFPB	Paris Le Bourget	EGGW	London Luton	540	-5%
LFPB	Paris Le Bourget	LIML	Milano Linate	535	-6%
LFMN	Nice Côte d'Azur	EGLF	Farnborough	525	-17%
EGLF	Farnborough	LSGG	Geneva International	442	-18%
LEBL	Barcelona	LEMD	Madrid Barajas	419	1%
LIML	Milano Linate	LFMN	Nice Côte d'Azur	418	11%
EGKB	London Biggin Hill	LFPB	Paris Le Bourget	406	-8%
LFMN	Nice Côte d'Azur	EGGW	London Luton	394	-6%
LFLB	Chambery Savoie	LFPB	Paris Le Bourget	376	-8%
EGNL	Walney Island	EGLF	Farnborough	375	-2%
EGGD	Bristol	EGNL	Walney Island	374	-10%
LSZH	Zurich	LFPB	Paris Le Bourget	374	-17%
LZIB	Bratislava M. R. Stefanika	LKPR	Prague Vaclav Havel	363	23%
LSZH	Zurich	LSGG	Geneva International	357	-12%
LSGG	Geneva International	LIML	Milano Linate	350	5%
LSZH	Zurich	LFMN	Nice Côte d'Azur	323	-1%
EGGP	Liverpool International	EGNS	Ronaldsway	322	-7%
LFPB	Paris Le Bourget	LEMD	Madrid Barajas	322	14%
EGGW	London Luton	LSGG	Geneva International	318	-13%
LEMD	Madrid Barajas	LEMG	Malaga Costa del Sol	312	56%
EGGW	London Luton	EGLF	Farnborough	312	-6%
KTEB	Teterboro	EGGW	London Luton	302	35%
GEML	Melilla	LEMG	Malaga Costa del Sol	301	17%

TOP 10 FLOWS– MAY 2024

AVERAGE DAILY BUSINESS AVIATION FLIGHTS



ORIGIN	DESTINATION	MONTH CURRENT YEAR	MONTH GROWTH	YTD CURRENT YEAR	YTD GROWTH
France	France	143,5	-1,9%	116,6	-3,3%
UK-Continental	UK-Continental	122,0	0,5%	103,0	-0,5%
Germany	Germany	113,3	-8,9%	102,8	-7,0%
Italy	Italy	77,5	7,1%	50,8	10,1%
Spain-Continental	Spain-Continental	56,5	16,1%	44,9	10,7%
Norway-Continental	Norway-Continental	44,6	1,7%	44,2	6,4%
UK-Continental	France	39,6	3,0%	28,4	-6,7%
France	UK-Continental	38,6	1,4%	28,4	-5,6%
Sweden	Sweden	36,4	4,6%	36,1	-1,7%
Türkiye	Türkiye	34,5	-4,1%	32,2	-4,6%

TRAFFIC PER STATE – MAY 2024

AVERAGE DAILY BUSINESS AVIATION FLIGHTS – PART 1



EBA A TRAFFIC TRACKER - MAY 2024

STATE	MONTH CURRENT YEAR	MONTH PREVIOUS YEAR	MONTH CHANGE	MONTH GROWTH	YTD CURRENT YEAR	YTD PREVIOUS YEAR	YTD CHANGE	YTD GROWTH
NM Area	2.247,6	2.173,4	74,3	3,4%	1.838,3	1.822,0	16,3	0,9%
ECAC	2.238,0	2.161,9	76,1	3,5%	1.829,2	1.810,5	18,8	1,0%
ESRA08	2.198,9	2.147,0	51,8	2,4%	1.795,0	1.795,4	-0,4	0,0%
ESRA02	2.187,6	2.135,1	52,5	2,5%	1.786,4	1.786,1	0,3	0,0%
SES-RP2	2.146,6	2.094,6	52,1	2,5%	1.745,8	1.746,1	-0,2	0,0%
SES-RP3	2.041,2	1.991,7	49,5	2,5%	1.658,4	1.658,2	0,2	0,0%
EU27	1.991,6	1.943,2	48,4	2,5%	1.608,4	1.610,9	-2,5	-0,2%
FABEC	1.438,9	1.422,5	16,4	1,1%	1.176,2	1.197,0	-20,8	-1,7%
France	937,5	904,0	33,5	3,7%	726,6	726,1	0,6	0,1%
BLUE MED FAB	665,4	617,9	47,5	7,7%	456,8	439,3	17,4	4,0%
Germany	576,9	602,5	-25,6	-4,3%	508,0	531,2	-23,2	-4,4%
Italy	565,1	523,2	41,9	8,0%	384,4	370,1	14,3	3,9%
UK-Ireland FAB	547,3	520,1	27,2	5,2%	435,7	435,1	0,7	0,2%
UK-Continental	535,2	509,0	26,2	5,1%	428,0	427,1	0,9	0,2%
FAB CE	407,1	404,7	2,4	0,6%	341,0	340,8	0,1	0,0%
Switzerland	405,7	384,0	21,7	5,7%	363,6	361,9	1,6	0,5%
South West FAB	349,8	329,3	20,5	6,2%	268,3	261,0	7,3	2,8%
Spain	342,2	320,7	21,5	6,7%	262,0	254,5	7,5	2,9%
Spain-Continental	334,5	311,6	22,8	7,3%	254,0	245,4	8,7	3,5%
Austria	255,5	263,5	-7,9	-3,0%	219,8	227,4	-7,6	-3,3%
Belgium/Luxembourg	234,7	237,5	-2,8	-1,2%	201,1	210,5	-9,4	-4,5%
Netherlands	171,0	166,5	4,5	2,7%	140,1	145,5	-5,4	-3,7%

TRAFFIC PER STATE – MAY 2024

AVERAGE DAILY BUSINESS AVIATION FLIGHTS – PART 2



EBA A TRAFFIC TRACKER - MAY 2024

STATE	MONTH CURRENT YEAR	MONTH PREVIOUS YEAR	MONTH CHANGE	MONTH GROWTH	YTD CURRENT YEAR	YTD PREVIOUS YEAR	YTD CHANGE	YTD GROWTH
Türkiye	144,8	140,2	4,5	3,2%	130,8	127,4	3,4	2,7%
DK-SE FAB	130,0	134,2	-4,2	-3,1%	118,3	121,6	-3,3	-2,7%
Greece	144,3	132,4	11,9	9,0%	100,2	93,4	6,8	7,3%
Croatia	131,5	119,1	12,4	10,4%	93,9	88,9	5,0	5,7%
Czech Republic	116,8	114,2	2,6	2,3%	97,7	95,5	2,2	2,3%
Serbia/Montenegro	106,0	101,2	4,8	4,8%	87,2	83,5	3,7	4,5%
Ireland	112,5	100,7	11,8	11,7%	82,3	78,9	3,4	4,3%
NEFAB	98,2	100,6	-2,5	-2,4%	90,5	90,2	0,2	0,3%
Sweden	93,5	96,9	-3,4	-3,5%	87,3	90,9	-3,6	-3,9%
Danube FAB	97,3	94,9	2,5	2,6%	90,5	86,0	4,4	5,2%
Hungary	89,3	87,6	1,6	1,9%	78,0	75,9	2,1	2,7%
Portugal-Lisbon/SantaMaria	71,8	76,1	-4,3	-5,6%	61,9	65,2	-3,3	-5,1%
Baltic FAB	70,1	74,5	-4,5	-6,0%	59,9	63,5	-3,6	-5,7%
Slovenia	76,0	72,4	3,6	5,0%	57,5	54,8	2,7	5,0%
Poland	67,5	71,8	-4,3	-6,0%	58,1	61,5	-3,4	-5,5%
Bulgaria	75,8	71,6	4,1	5,8%	70,2	67,4	2,8	4,2%
Denmark	66,7	70,6	-3,9	-5,5%	58,6	59,1	-0,4	-0,7%
Norway-Continental	71,9	69,8	2,1	3,0%	67,5	64,6	2,9	4,4%
Portugal-Continental	62,0	64,2	-2,3	-3,5%	51,0	53,3	-2,3	-4,3%
Romania	57,1	57,4	-0,3	-0,5%	55,2	51,6	3,6	7,0%
Bosnia and Herzegovina	60,8	57,3	3,5	6,0%	47,7	46,9	0,8	1,6%
Slovakia	55,8	52,2	3,6	7,0%	46,4	44,0	2,4	5,5%

TRAFFIC PER STATE – MAY 2024

AVERAGE DAILY BUSINESS AVIATION FLIGHTS – PART 3



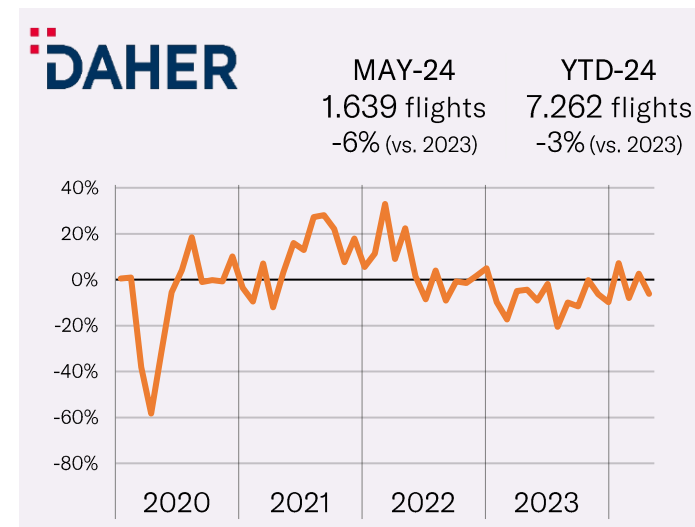
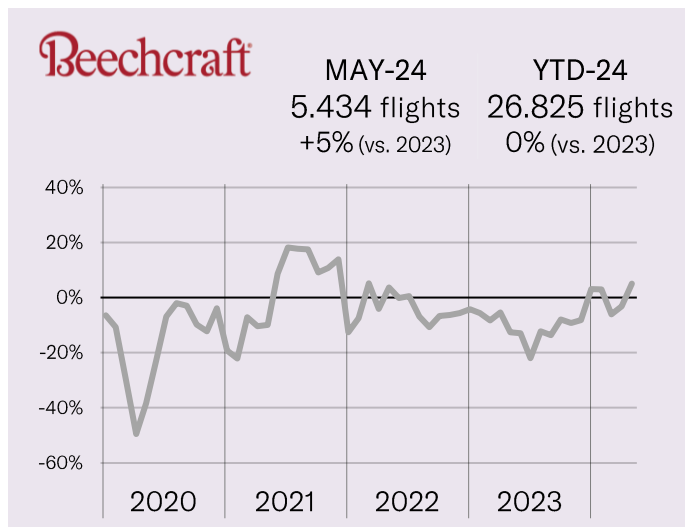
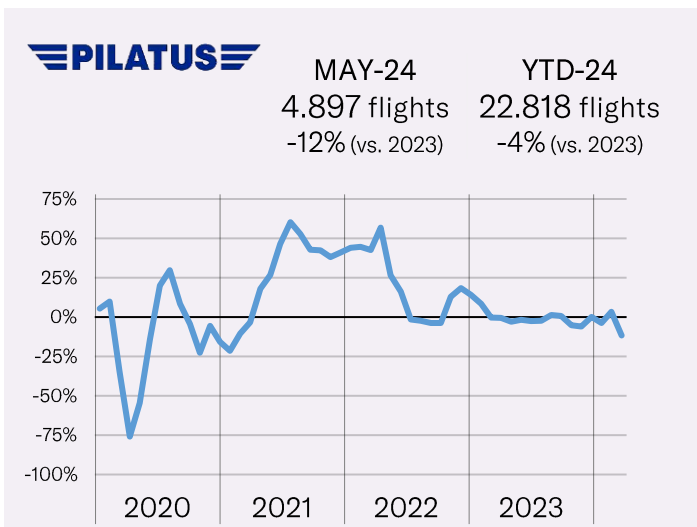
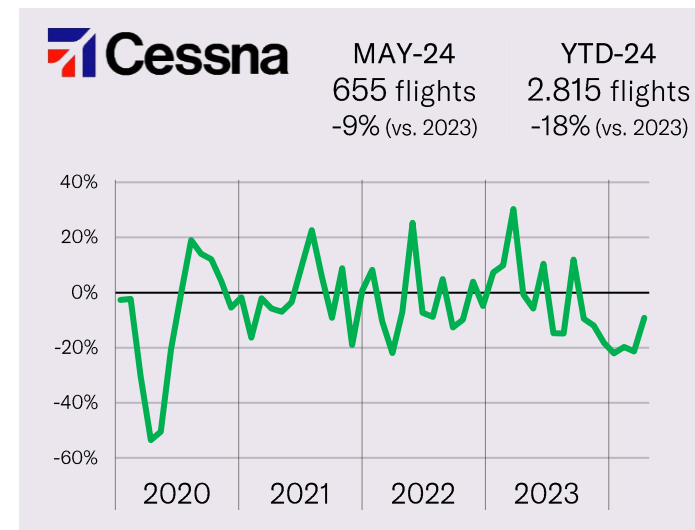
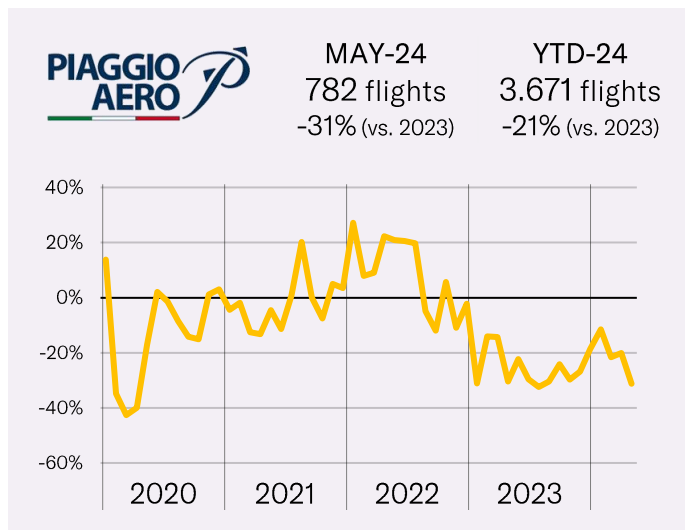
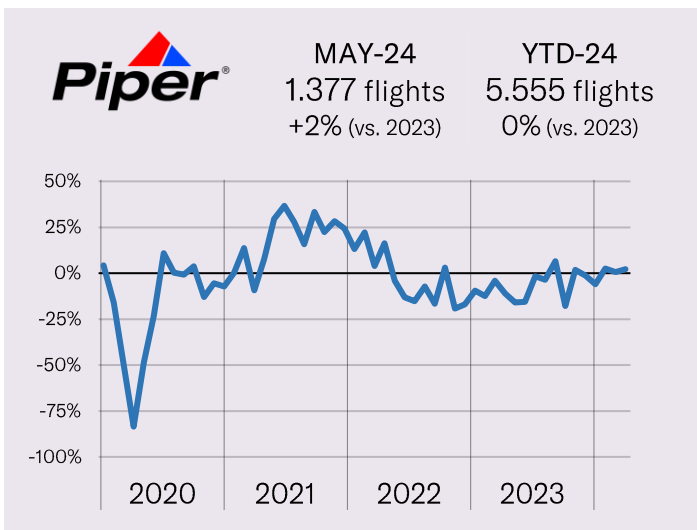
STATE	MONTH CURRENT YEAR	MONTH PREVIOUS YEAR	MONTH CHANGE	MONTH GROWTH	YTD CURRENT YEAR	YTD PREVIOUS YEAR	YTD CHANGE	YTD GROWTH
Cyprus	46,3	49,9	-3,6	-7,2%	43,3	44,8	-1,5	-3,4%
Morocco	40,5	42,4	-1,9	-4,5%	40,1	41,5	-1,4	-3,4%
Egypt	37,7	34,3	3,4	10,0%	39,2	36,0	3,2	8,9%
Albania	43,1	32,9	10,2	31,1%	29,1	23,2	6,0	25,8%
North Macedonia	27,9	27,0	1,0	3,6%	20,9	18,9	2,0	10,5%
Israel	21,1	23,8	-2,7	-11,4%	20,3	22,9	-2,6	-11,2%
Finland	18,2	23,3	-5,1	-21,7%	18,2	21,5	-3,3	-15,2%
Azerbaijan	24,2	22,1	2,1	9,5%	22,5	20,9	1,6	7,8%
Malta	25,2	21,0	4,1	19,6%	19,9	17,5	2,4	13,5%
Portugal-SantaMaria	17,8	18,6	-0,8	-4,3%	17,7	18,8	-1,1	-6,1%
Iceland	40,9	18,4	22,5	122,2%	33,9	14,8	19,2	129,5%
Spain-Canaries	15,7	17,8	-2,0	-11,4%	19,0	19,7	-0,6	-3,2%
Georgia	22,1	16,8	5,2	31,0%	18,8	13,2	5,6	42,3%
Lithuania	11,9	14,7	-2,8	-19,3%	9,5	10,5	-1,0	-9,3%
Latvia	11,3	12,8	-1,5	-12,1%	9,1	9,6	-0,5	-5,3%
Estonia	10,0	12,6	-2,6	-20,7%	7,8	9,0	-1,2	-12,9%
Tunisia	10,1	8,8	1,3	14,2%	8,9	7,7	1,2	15,6%
Armenia	5,4	6,2	-0,8	-13,5%	4,0	7,1	-3,2	-44,4%
Libya	4,9	3,3	1,6	50,5%	4,2	3,8	0,4	10,7%
Moldova	3,0	2,2	0,8	36,8%	2,8	1,9	0,9	45,7%
Belarus	0,7	0,7	0,0	4,5%	0,7	0,7	0,0	-3,4%
Ukraine	0,1	0,1	0,0	-33,3%	0,1	0,1	0,0	35,5%

EBA A TRAFFIC TRACKER - MAY 2024

TURBOPROPS OEMS – MAY 2024

MONTHLY TRAFFIC & MONTHLY GROWTH

EBAA TRAFFIC TRACKER - MAY 2024

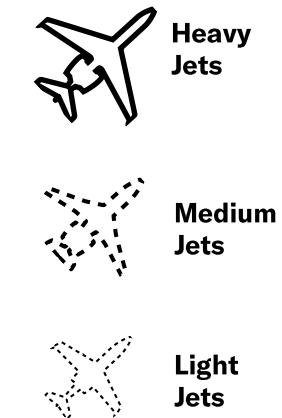
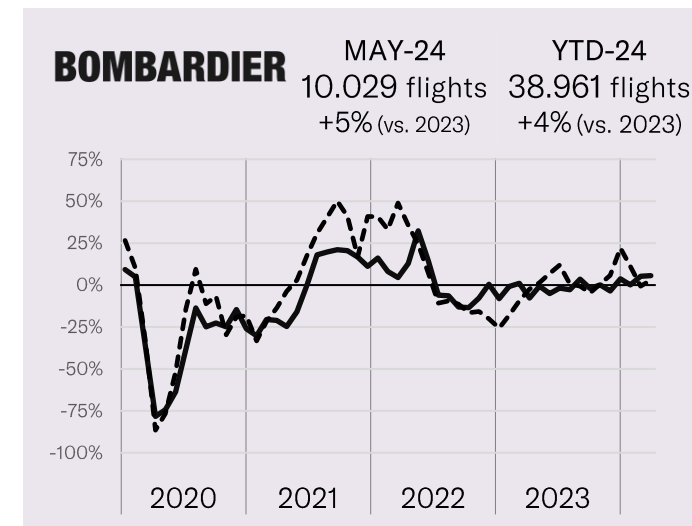
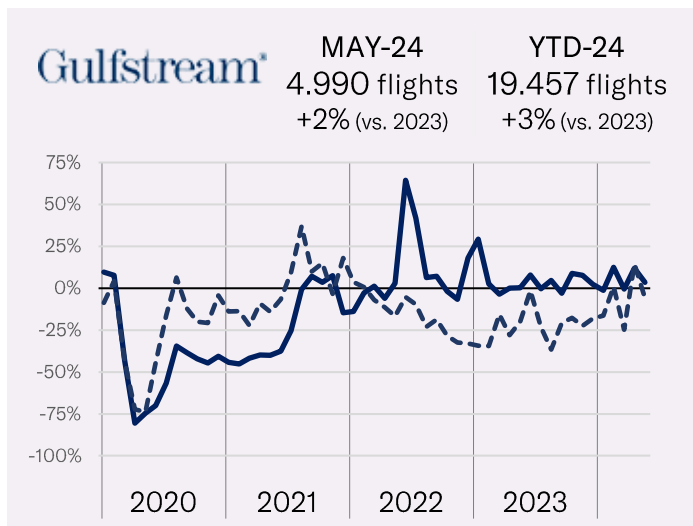
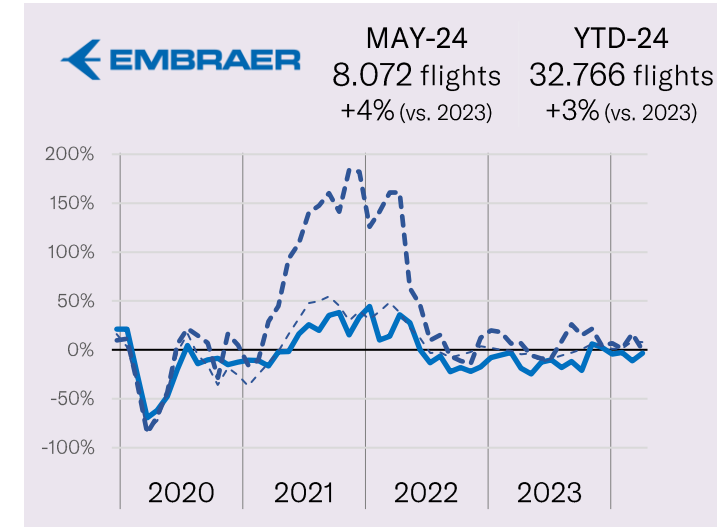
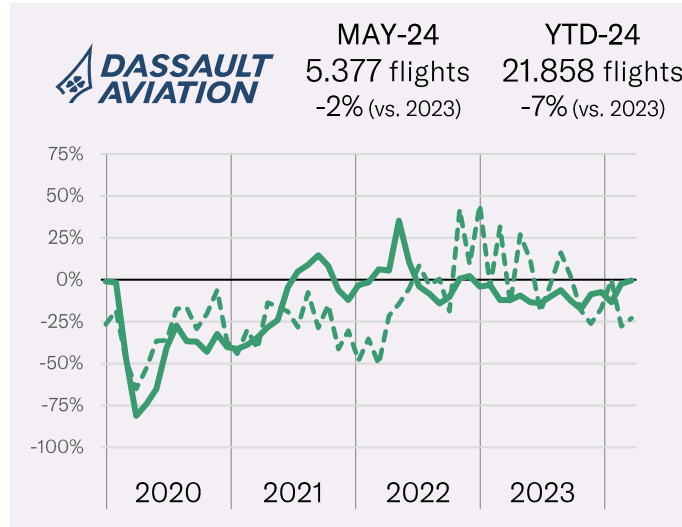
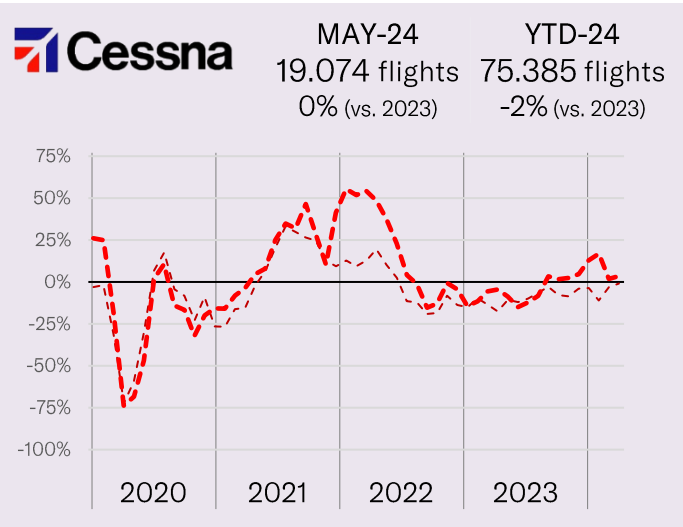


JET OEMS (1/2) – MAY 2024

MONTHLY TRAFFIC & MONTHLY GROWTH



EBAA TRAFFIC TRACKER - MAY 2024

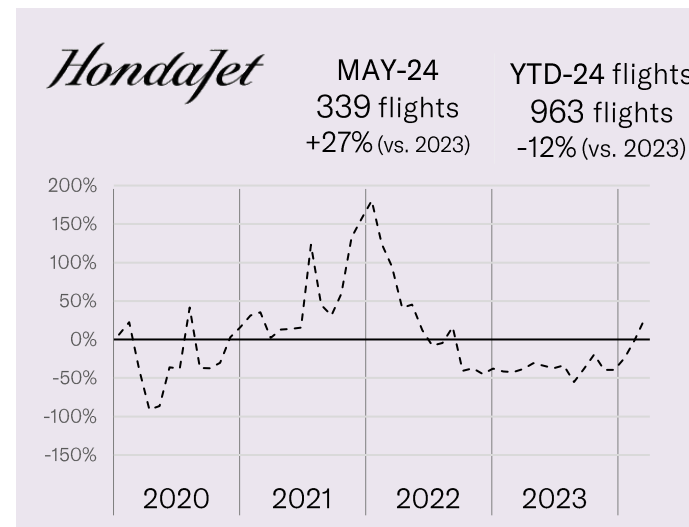
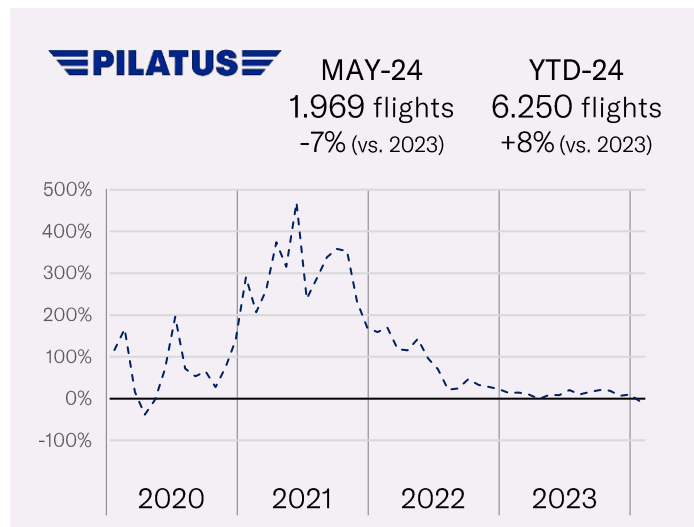
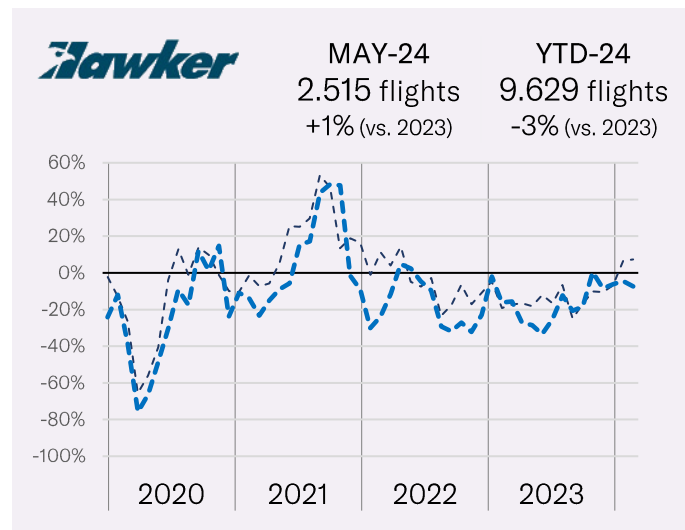
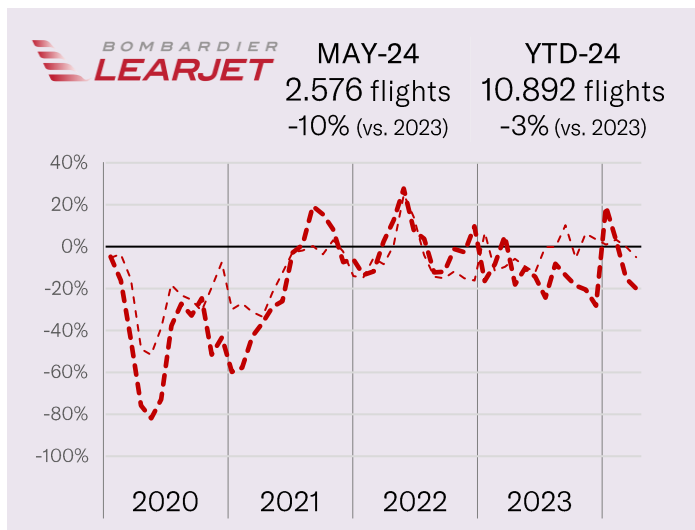


JET OEMS (2/2) – MAY 2024

MONTHLY TRAFFIC & MONTHLY GROWTH



EBAA TRAFFIC TRACKER - MAY 2024

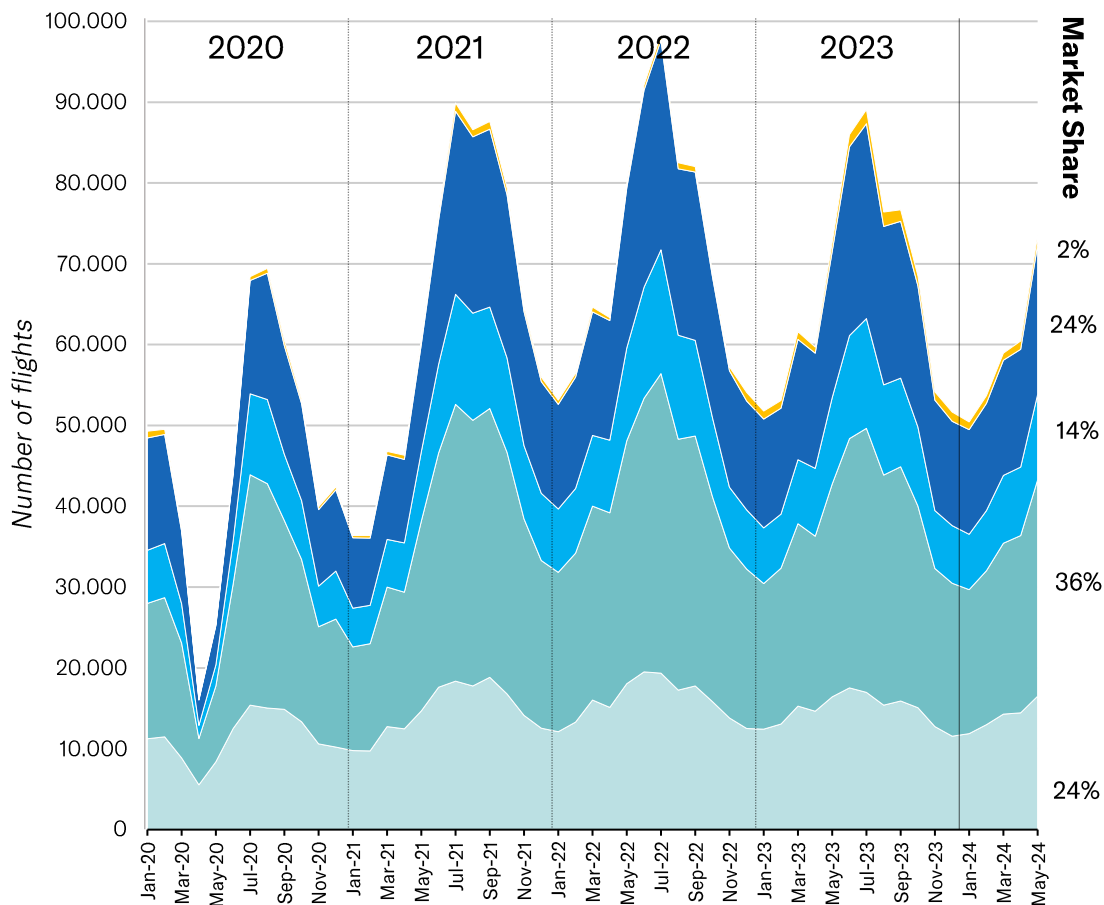


BUSINESS AVIATION AIRPLANES – MAY 2024

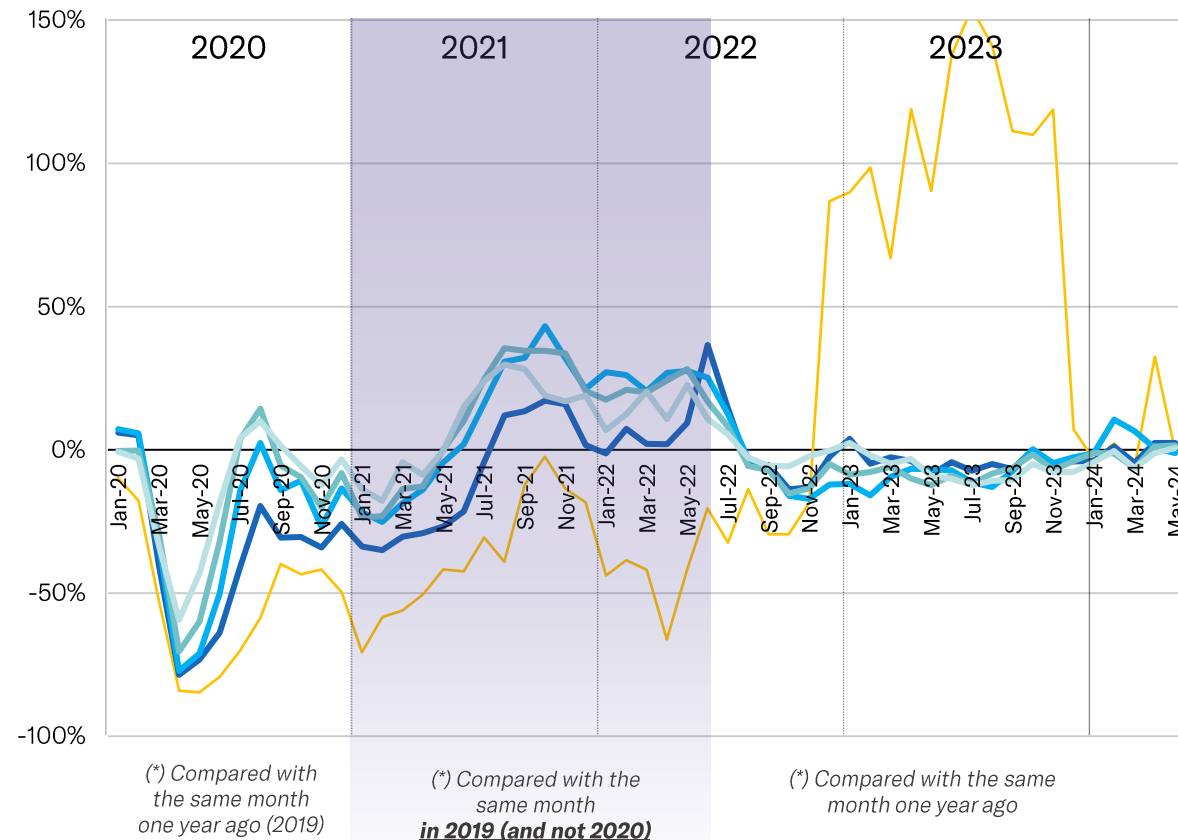
MONTHLY TRAFFIC & MONTHLY GROWTH

EBAA TRAFFIC TRACKER - MAY 2024

Activity per aircraft segment



Monthly Growth - compared with */**



(*) Compared with the same month one year ago (2019)

(*) Compared with the same month in 2019 (and not 2020)

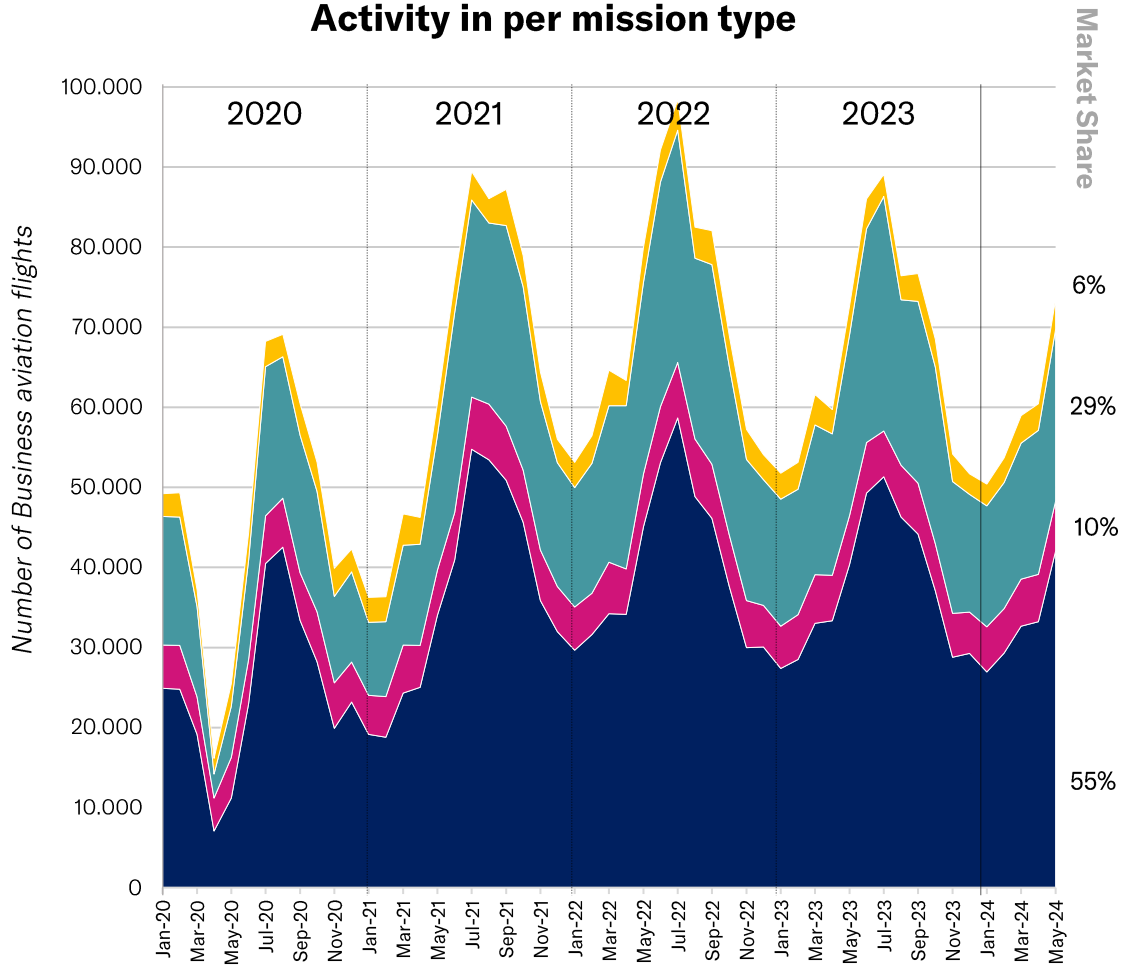
(*) Compared with the same month one year ago

BUSINESS AVIATION MISSIONS – MAY 2024

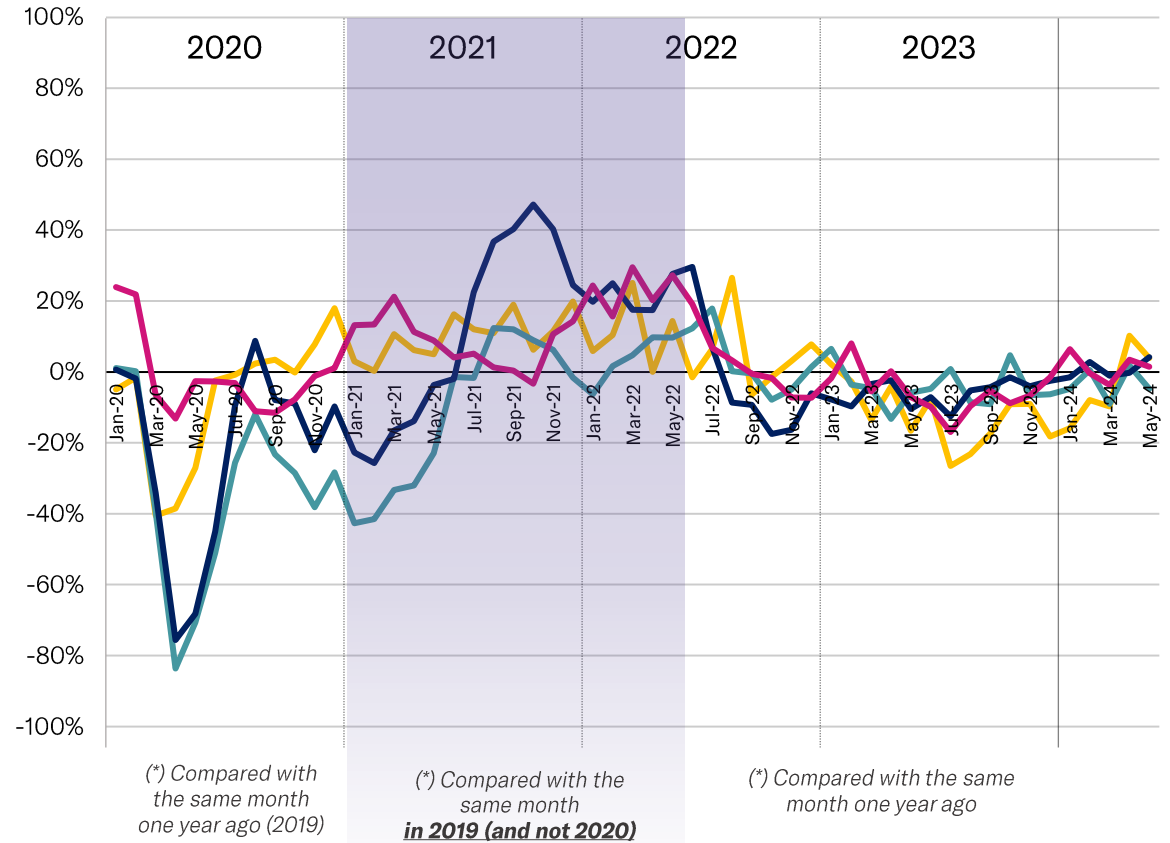
MONTHLY TRAFFIC & MONTHLY GROWTH



Activity in per mission type



Monthly Growth - compared with */**



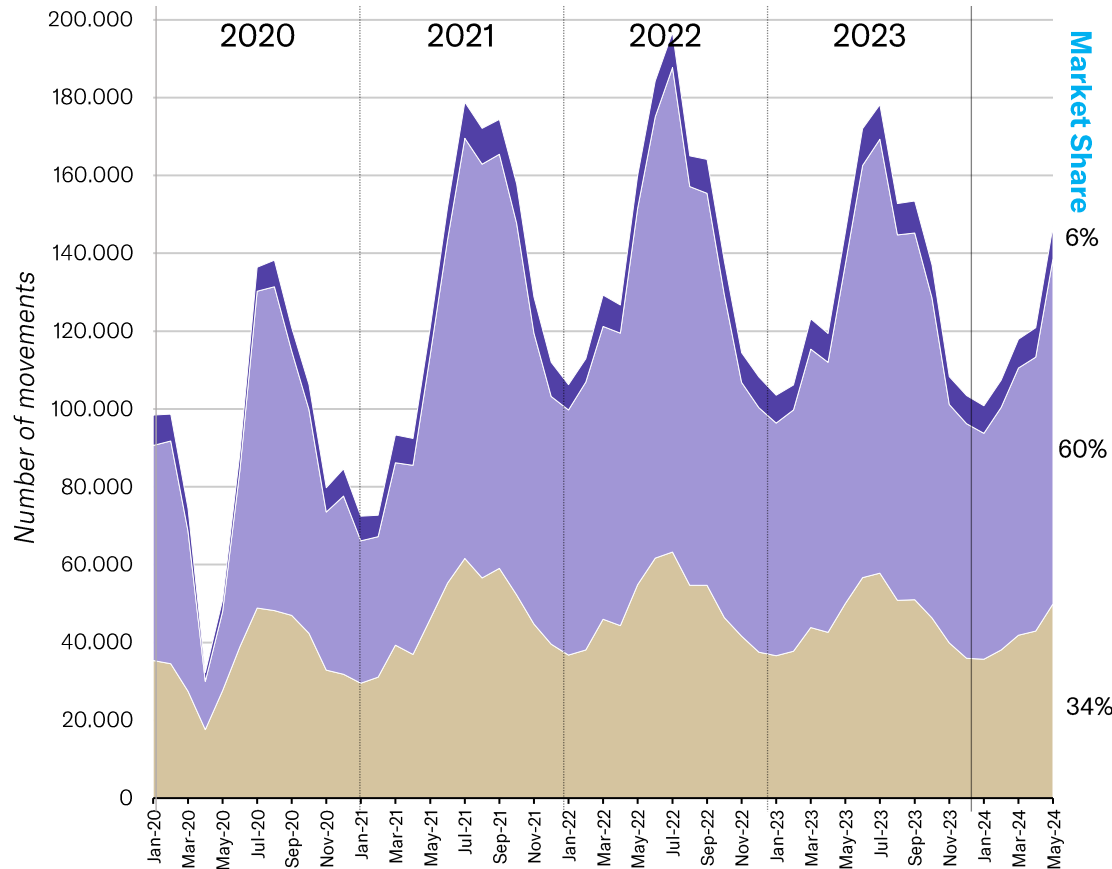
BUSINESS AVIATION ORIGINS & DESTINATIONS – MAY 2024

MONTHLY TRAFFIC & MONTHLY GROWTH

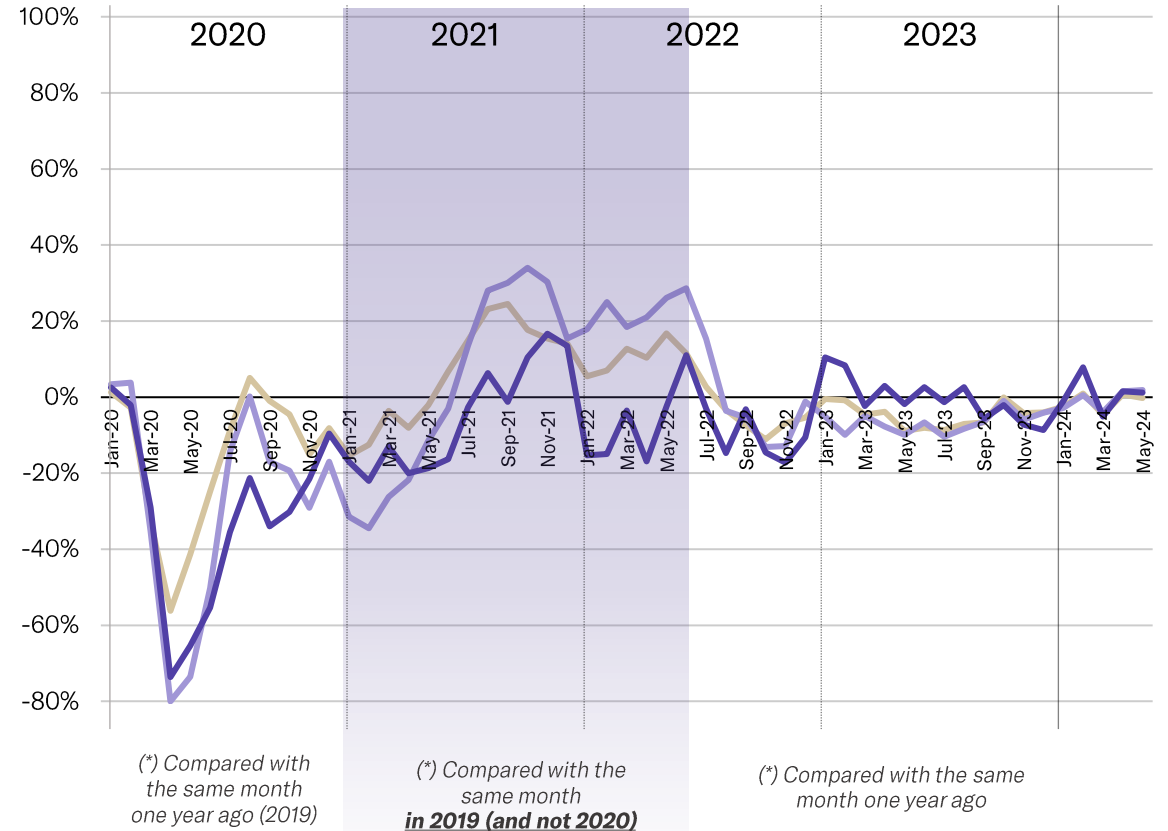


EBAA TRAFFIC TRACKER - MAY 2024

Activity per Origin-Destination



Monthly Growth - compared with */**



(*) Compared with the same month one year ago (2019)

(*) Compared with the same month in 2019 (and not 2020)

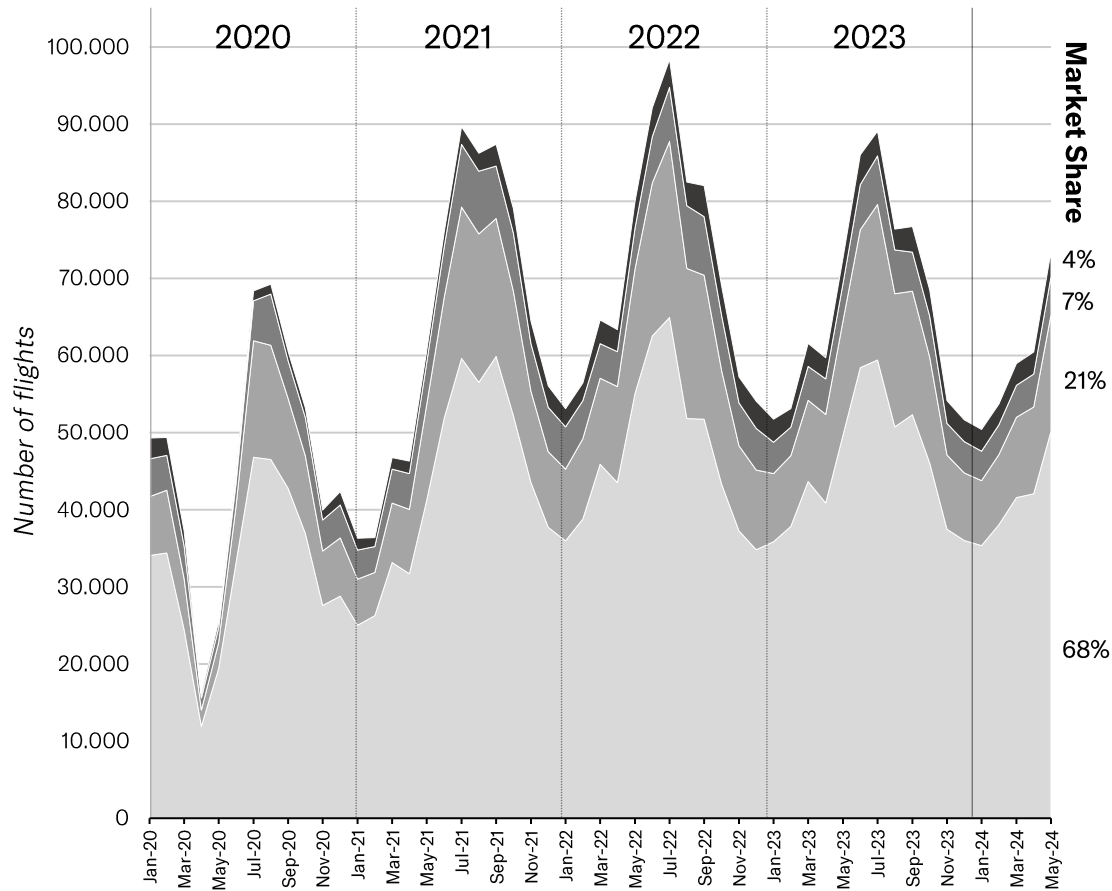
(*) Compared with the same month one year ago

BUSINESS AVIATION FLIGHT SECTOR – MAY 2024

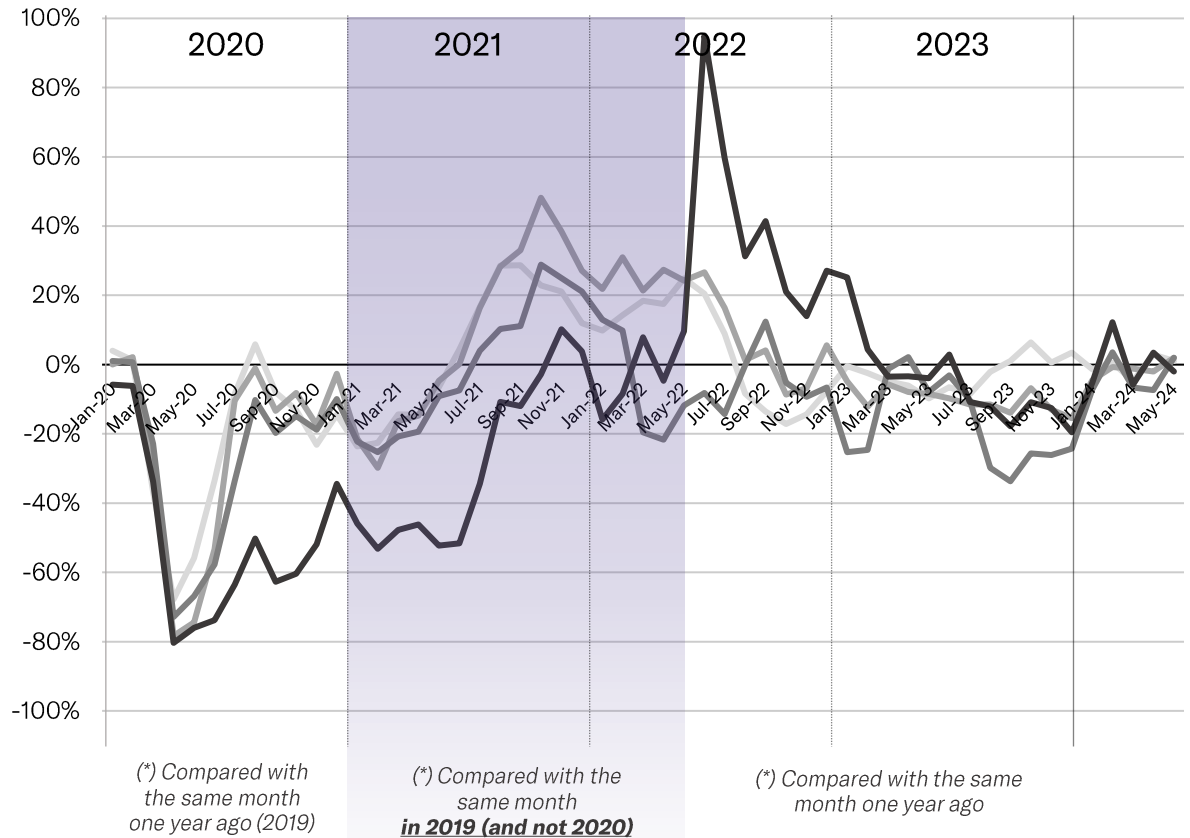
MONTHLY TRAFFIC & MONTHLY GROWTH



Activity per flight sector



Monthly Growth - compared with */**



Short Haul
(below 500nm / 1000km)



Short Haul
(below 1000nm / 2000km)



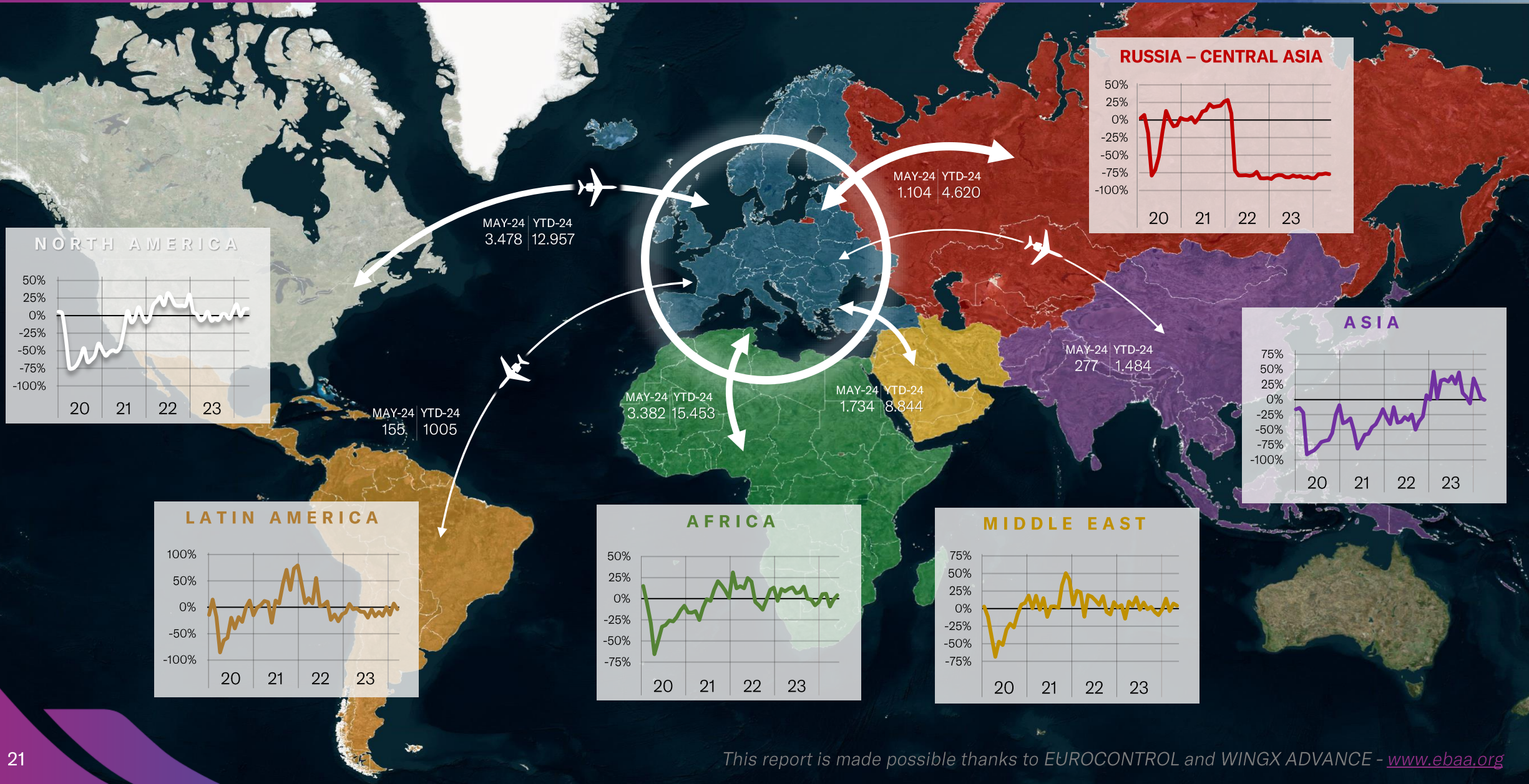
Medium Haul
(below 2500nm / 4700km)



Long Haul
(above 2500nm / 4700km)

EUROPEAN BUSINESS AVIATION INTERCONTINENTAL CONNECTIONS – MAY 2024

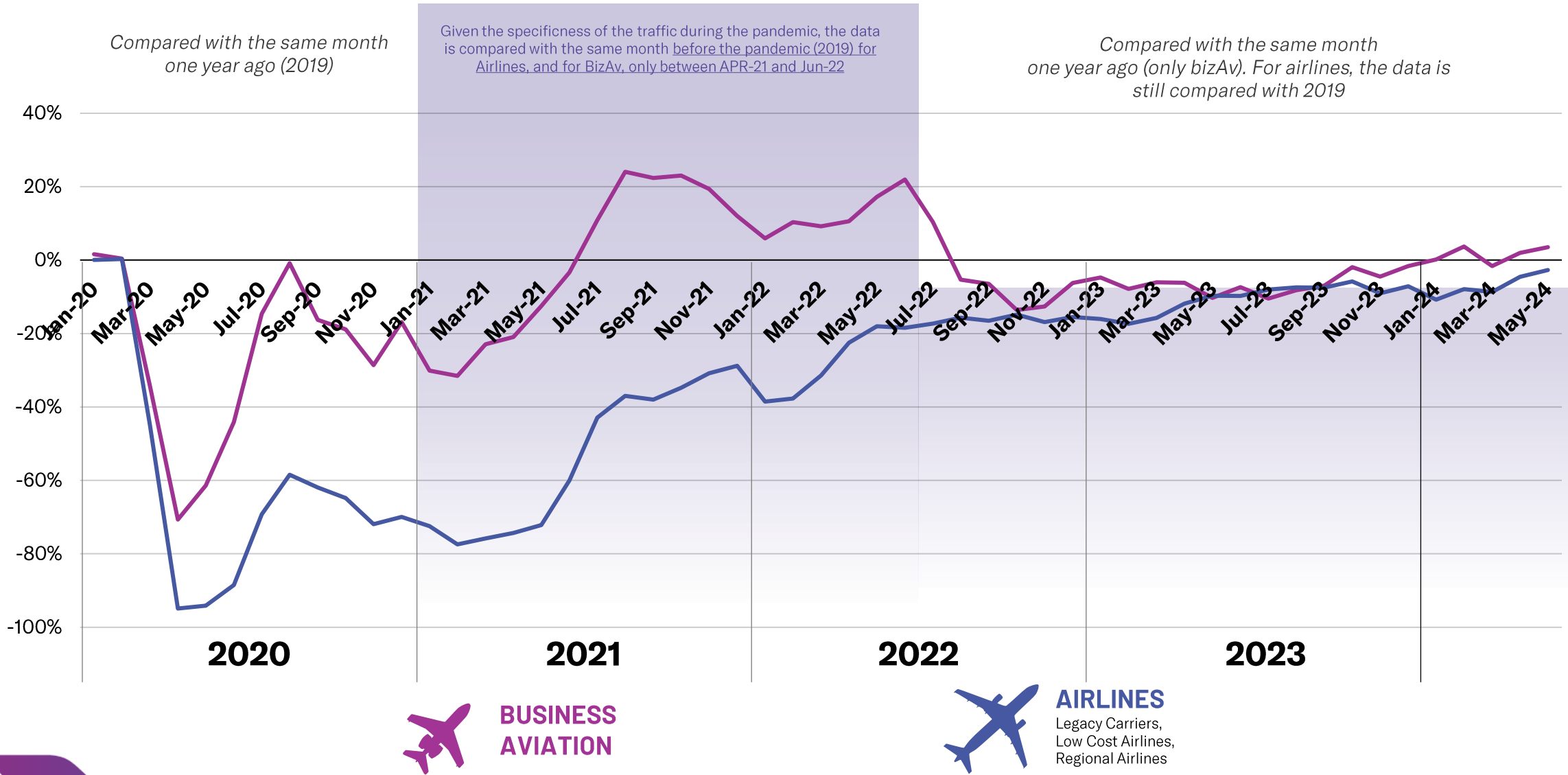
MONTHLY TRAFFIC & MONTHLY GROWTH



BUSINESS AVIATION VS. AIRLINES

MONTHLY TRAFFIC GROWTH

EBAA TRAFFIC TRACKER - MAY 2024

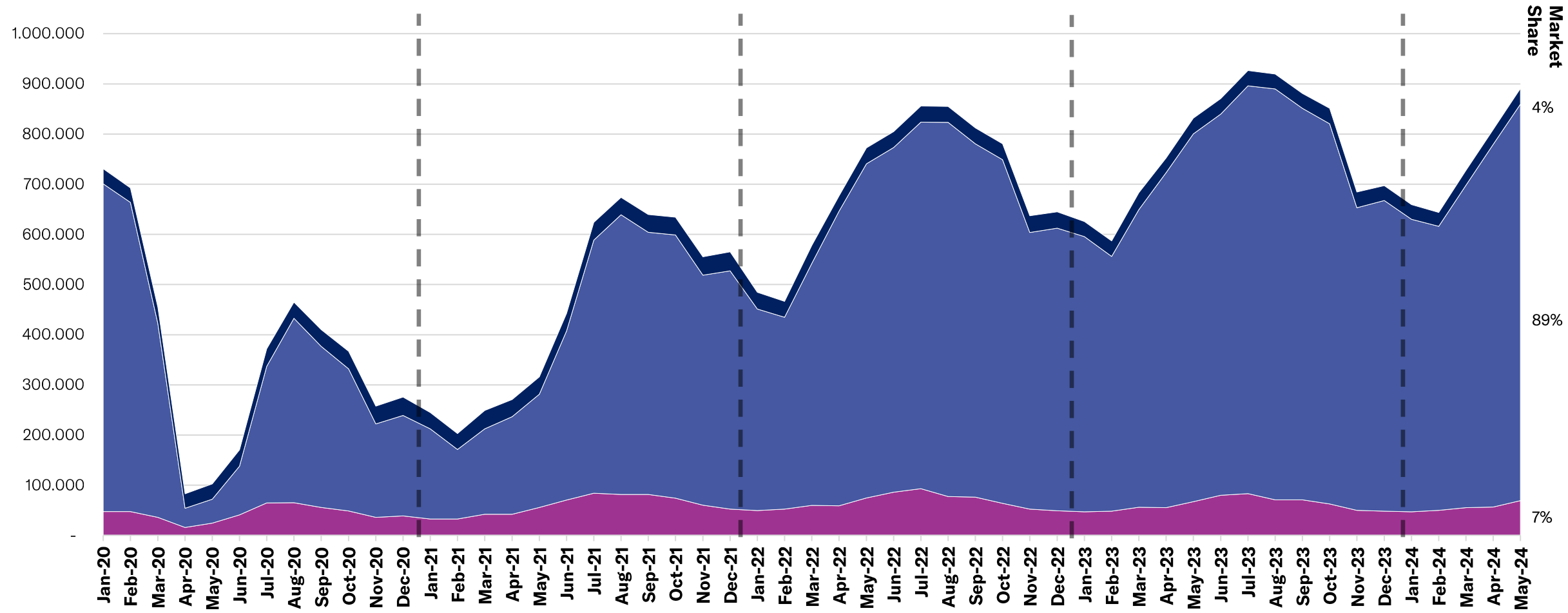


BUSINESS AVIATION VS. AIRLINES & CARGO

MONTHLY TRAFFIC MARKET SHARE



EBAA TRAFFIC TRACKER - MAY 2024



 **CARGO**

 **AIRLINES**
Legacy Carriers,
Low Cost Airlines,
Charter Airlines

 **BUSINESS AVIATION**

BUSINESS AVIATION VS. AIRLINES (EUROPE)

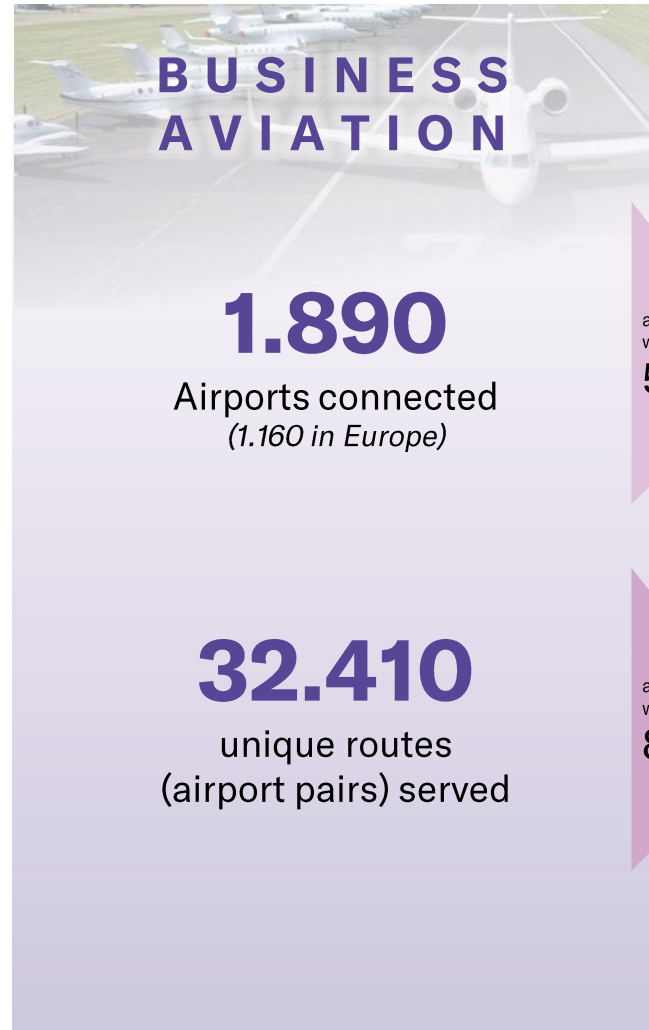
MONTHLY CONNECTIVITY COMPARISON – YTD 2024



Airports connected

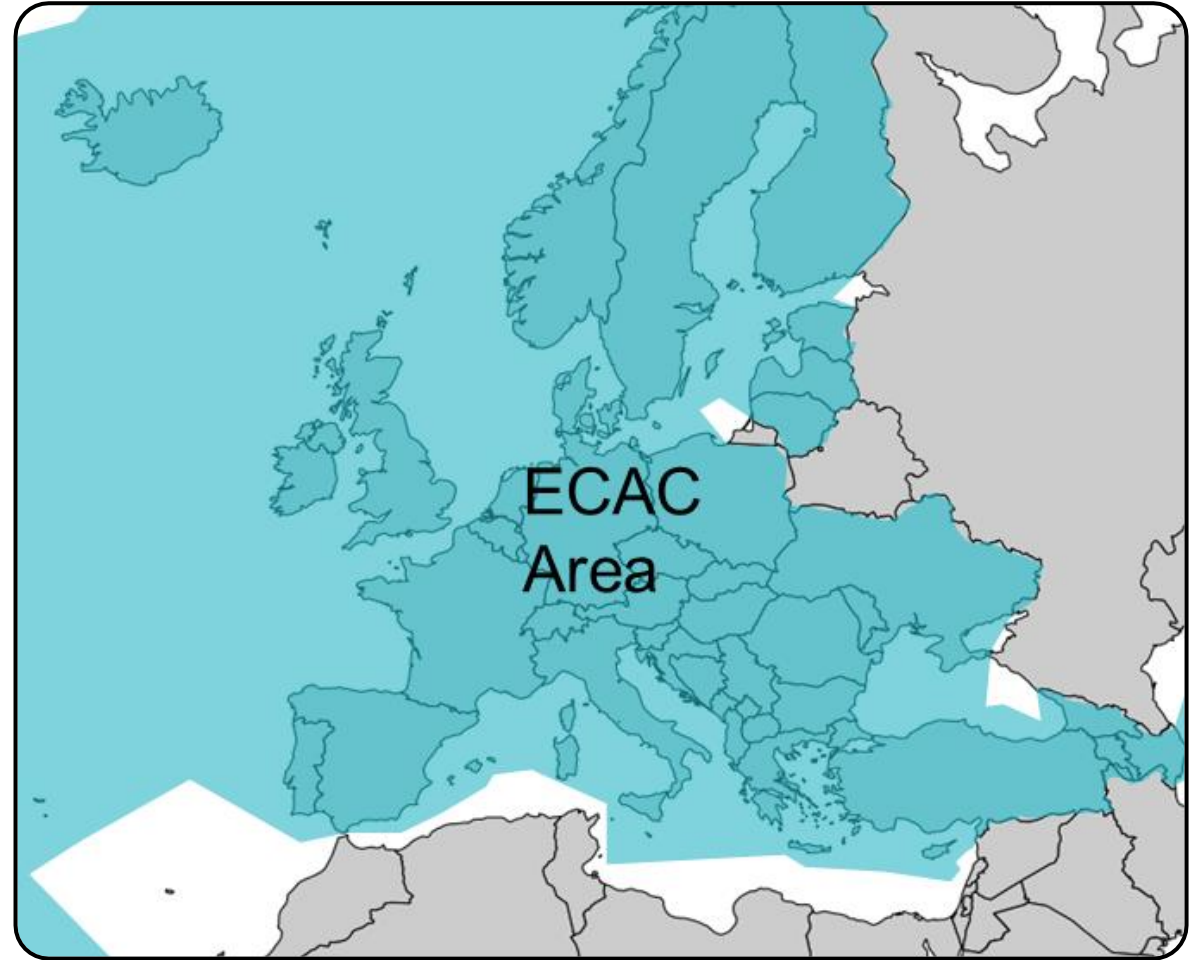
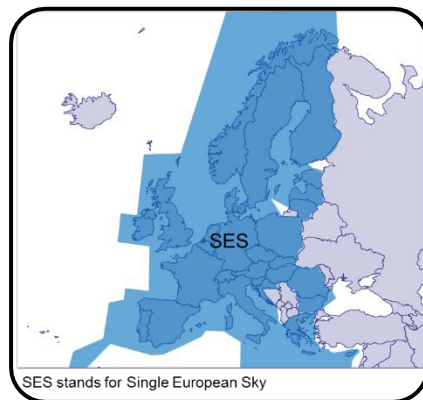
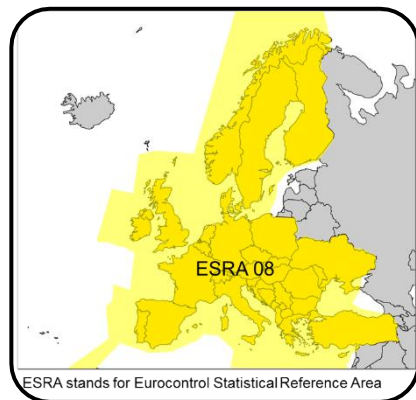
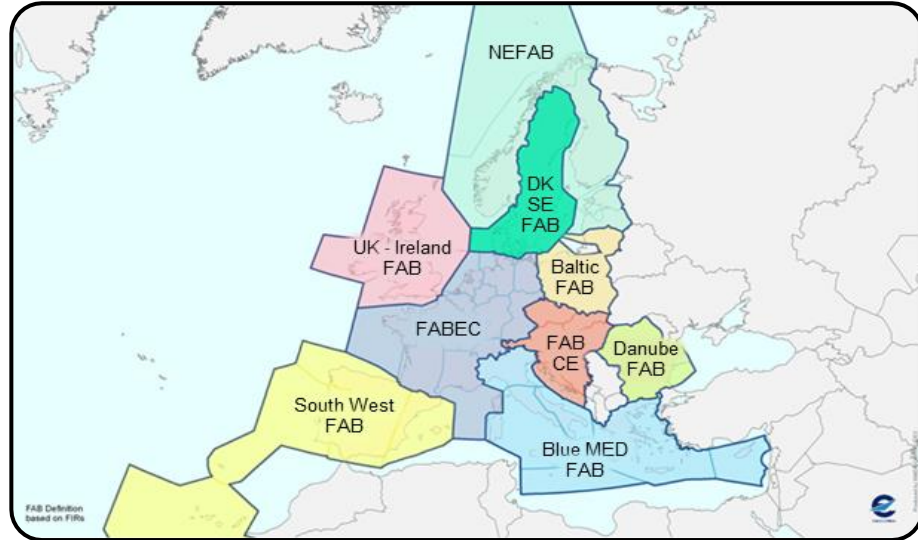


Unique routes served



- Airlines categories are defined by EUROCONTROL as : « mainline, low cost airlines and regional airlines)
- For airlines, routes below at least 1 connection a week are excluded from the analysis (*it is assumed that below at least 1 weekly connection, a route cannot be considered as a part of the scheduled air transport offer).*

AREAS



ECAC stands for European Civil Aviation Conference

The « Business Aviation » segment is defined by Eurocontrol as follows :

A318	Airbus A318	Airbus	Bizliner	flight type G only
A319	Airbus A319	Airbus	Bizliner	flight type G only
A320	Airbus A320	Airbus	Bizliner	flight type G only
ASTR	Gulfstream G100	Gulfstream	Midsize Jet	
B350	King Air 350	Hawker Beechcraft	Turboprop	flight type G and N only
B737	Boeing 737-700	Boeing	Bizliner	flight type G only
B738	Boeing 737-800	Boeing	Bizliner	flight type G only
B739	Boeing 737-900	Boeing	Bizliner	flight type G only
B748	Boeing 747-8I	Boeing	Bizliner	flight type G only
B77L	Boeing 777-200 Freighter	Boeing	Bizliner	flight type G only
B77W	Boeing 777-300ER	Boeing	Bizliner	flight type G only
B788	Boeing 787-8	Boeing	Bizliner	flight type G only
B789	Boeing 787-9	Boeing	Bizliner	flight type G only
BE10	KingAir 100	Hawker Beechcraft	Turboprop	
BE20	King Air 200	Hawker Beechcraft	Turboprop	
BE30	Super King Air 300	Hawker Beechcraft	Turboprop	
BE40	Hawker Beechjet 400	Hawker Beechcraft	Light Jet	
BE90	King Air 90	Hawker Beechcraft	Turboprop	
BE9L	King Air 90	Hawker Beechcraft	Turboprop	
BE9T	KingAir90	Hawker Beechcraft	Turboprop	
C208	Cessna 208 Caravan	Cessna	Turboprop	
C25A	Cessna Citation CJ2	Cessna	Light Jet	
C25B	Cessna Citation CJ3	Cessna	Light Jet	
C25C	Cessna Citation CJ4	Cessna	Light Jet	
C25M	Cessna M2	Cessna	Light Jet	
C425	Cessna Corsair	Cessna	Turboprop	
C441	Cessna Conquest	Cessna	Turboprop	
C500	Cessna Citation I	Cessna	Light Jet	
C501	Cessna Citation ISP	Cessna	Light Jet	
C510	Cessna Citation Mustang	Cessna	Light Jet	
C525	Cessna Citation CJ1	Cessna	Light Jet	
C550	Cessna Citation II	Cessna	Light Jet	
C551	Cessna Citation IISP	Cessna	Light Jet	
C55B	Cessna Citation Bravo	Cessna	Light Jet	
C560	Cessna Citation V	Cessna	Light Jet	
C56X	Cessna Citation Excel / XLS	Cessna	Light Jet	

C650	Cessna Citation III	Cessna	Midsize Jet	
C680	Citation Sovereign	Cessna	Midsize Jet	
C750	Cessna Citation X	Cessna	Midsize Jet	
CL30	Challenger 300 series	Bombardier	Midsize Jet	
CL35	Challenger 350	Bombardier	Midsize Jet	
CL60	Challenger 600 series	Bombardier	Heavy Jet	
CRJ2	Challenger 800-850	Bombardier	Heavy Jet	flight type G only
E135	Embraer RJ135	Embraer	Heavy Jet	flight type G only
E145	Embraer RJ145	Embraer	Heavy Jet	flight type G only
E190	Embraer 190	Embraer	Bizliner	flight type G only
E35L	Legacy 600 series	Embraer	Heavy Jet	
E50P	Embraer Phenom 100	Embraer	Light Jet	
E545	Legacy 450 / Praetor 500	Embraer	Midsize Jet	
E550	Embraer Legacy 500	Embraer	Midsize Jet	
E55P	Embraer Phenom 300	Embraer	Light Jet	flight type G and N only
E75L	Embraer RJ175	Embraer	Bizliner	flight type G only
EA50	Eclipse 500	Eclipse	Light Jet	
F2TH	Dassault Falcon 2000	Dassault	Heavy Jet	
F900	Dassault Falcon 900	Dassault	Heavy Jet	
FA10	Dassault Falcon 10/100	Dassault	Light Jet	
FA20	Dassault Falcon 20/200	Dassault	Midsize Jet	
FA50	Dassault Falcon 50	Dassault	Midsize Jet	
FA6X	Dassault Falcon 6X	Dassault	Heavy Jet	
FA7X	Dassault Falcon 7X	Dassault	Heavy Jet	
FA8X	Dassault Falcon 8X	Dassault	Heavy Jet	
G150	Gulfstream G150	Gulfstream	Midsize Jet	
G280	Gulfstream G280	Gulfstream	Midsize Jet	
GA5C	Gulfstream G500/550	Gulfstream	Heavy Jet	
GA6C	Gulfstream G600/650	Gulfstream	Heavy Jet	
GALX	Gulfstream G200	Gulfstream	Midsize Jet	
GL5T	Global 5000	Bombardier	Heavy Jet	
GL6T	Global 6000	Bombardier	Heavy Jet	
GLEX	Global Express / 6000	Bombardier	Heavy Jet	
GLF2	Gulfstream 2	Gulfstream	Heavy Jet	
GLF3	Gulfstream 3	Gulfstream	Heavy Jet	
GLF4	Gulfstream G300/450	Gulfstream	Heavy Jet	
GLF5	Gulfstream G500/550	Gulfstream	Heavy Jet	

GLF6	Gulfstream G600/650	Gulfstream	Heavy Jet	flight type G and N only
H25B	Hawker 700-900	Hawker Beechcraft	Midsize Jet	
H25C	British Aerospace 125-1000	British Aerospace	Light Jet	
HA4T	Hawker 4000	Hawker Beechcraft	Midsize Jet	
HDJT	HondaJet	Honda	Light Jet	
HF20	Hansa Jet	Hamburger Flugzeugbau	Light Jet	
LJ23	Learjet 23	Bombardier	Light Jet	
LJ24	Learjet 24	Bombardier	Light Jet	
LJ25	Learjet 25	Bombardier	Light Jet	
LJ28	Learjet 28	Bombardier	Light Jet	
LJ31	Learjet 31	Bombardier	Light Jet	
LJ35	Learjet 35	Bombardier	Light Jet	
LJ40	Learjet 40	Bombardier	Light Jet	
LJ45	Learjet 45	Bombardier	Light Jet	
LJ55	Learjet 55	Bombardier	Midsize Jet	
LJ60	Learjet 60	Bombardier	Midsize Jet	
LJ70	Learjet 70	Bombardier	Midsize Jet	
LJ75	Learjet 75	Bombardier	Midsize Jet	
P180	Piaggio P180 Avanti	Piaggio Aerospace	Turboprop	
PAY2	Piper Cheyenne 2	Piper Aircraft	Turboprop	
PAY3	Piper Cheyenne 3	Piper Aircraft	Turboprop	
PAY4	Piper Cheyenne 400	Piper Aircraft	Turboprop	
PC12	Pilatus PC-12	Pilatus	Turboprop	
PC24	Pilatus PC24	Pilatus	Light Jet	
PRM1	Premier 1	Hawker Beechcraft	Light Jet	
SBR1	Sabreliner	NA Rockwell	Light Jet	
SBR2	Sabreliner	NA Rockwell	Light Jet	
SJ30	Syberjet SJ30	SyberJet	Light Jet	
TBM7	Socata TBM 700	Daher-Socata	Turboprop	
TBM8	Socata TBM 850	Daher-Socata	Turboprop	
TBM9	Socata TBM 900 series	Daher-Socata	Turboprop	
WW23	1123 Westwind	IAI	Midsize Jet	
WW24	1124 Westwind	IAI	Midsize Jet	
EA50	Eclipse 500	Eclipse	Light Jet	

The list is permanently updated ...

DISCLAIMER

This report is provided by EBAA for information purposes only and no representation, warranties or other assurances, express or implied, are given as to the quality, accuracy, or completeness of the information contained in, or provided in connection with the report.

Recipients of this report must determine for themselves whether any matters referred to are suitable for their purposes. Neither EBAA nor any of their affiliates, agents, partners, representatives, consultants or any other company, firm or organisation involved in producing this report, nor any of their successors or assign or any employees, officer or director of any of them shall have any liability with respect to the use or reliance on the report by any person, irrespective of any negligence, omission or default, on the part of the foregoing persons.

Any reproduction or publication of this report, in whole or in part, is strictly forbidden without the written consent of EBAA. Please write to communications@ebaa.org for questions related to the use of this report.

For more information, please contact:

Square de Meeûs 37
BE - 1000 Brussels - Belgium

Phone: +32 2 318 28 00
Fax: +32 2 318 28 01

Follow us



@EUROPEANBUSINESSAVIATIONASSOCIATION



@EBAAORG



EUROPEAN BUSINESS AVIATION ASSOCIATION



@EUROPEAN_BUSINESS_AVIATION

www.ebaa.org

