

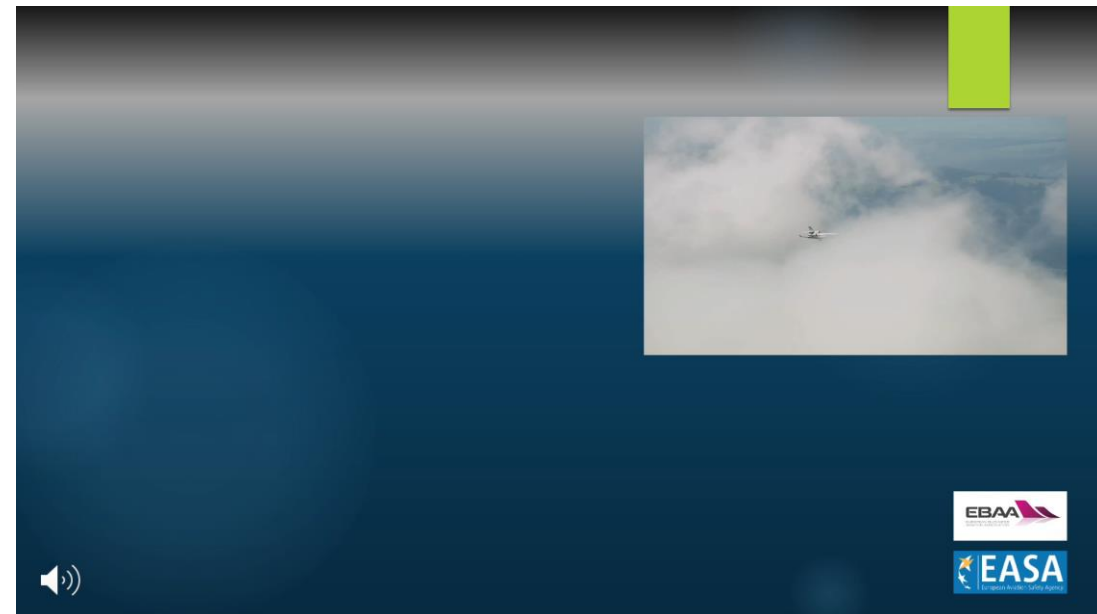
Introduction RRLD

EASA CAT.POL.A.255

Dispatch to destination with a 80% landing distance factor.

Advantages:

1. More payload
2. More destinations
3. More safety
4. More happy customers



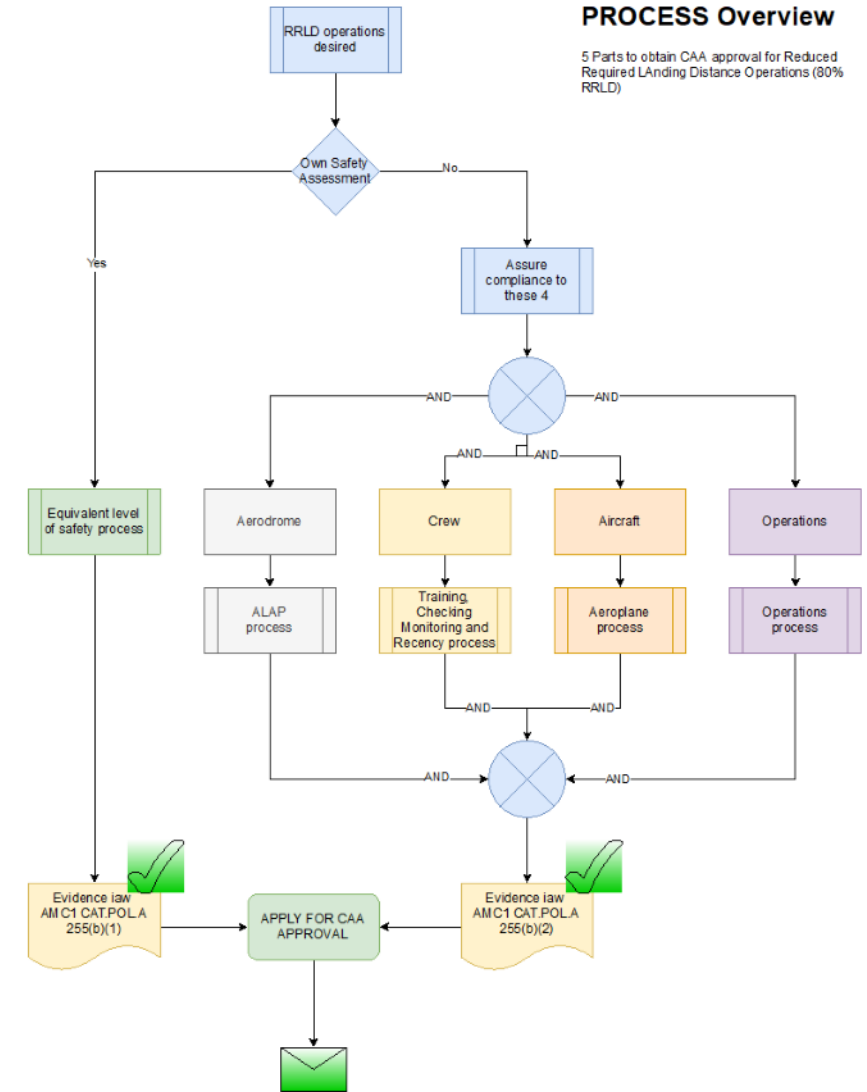
Disadvantages

1. Prior approval required
2. Compliance might be challenging
3. Investments needed, time consuming

RRLD application & compliance process

PROCESS

1. Need to DEMONSTRATE an equivalent level of safety to CAT.POL.A 230 (60%)
2. Two methods:
 - Do your own risk assessment –or–
 - Provide compliance to a set of EASA requirements.
3. Get 80% approval from your CAA/NAA.



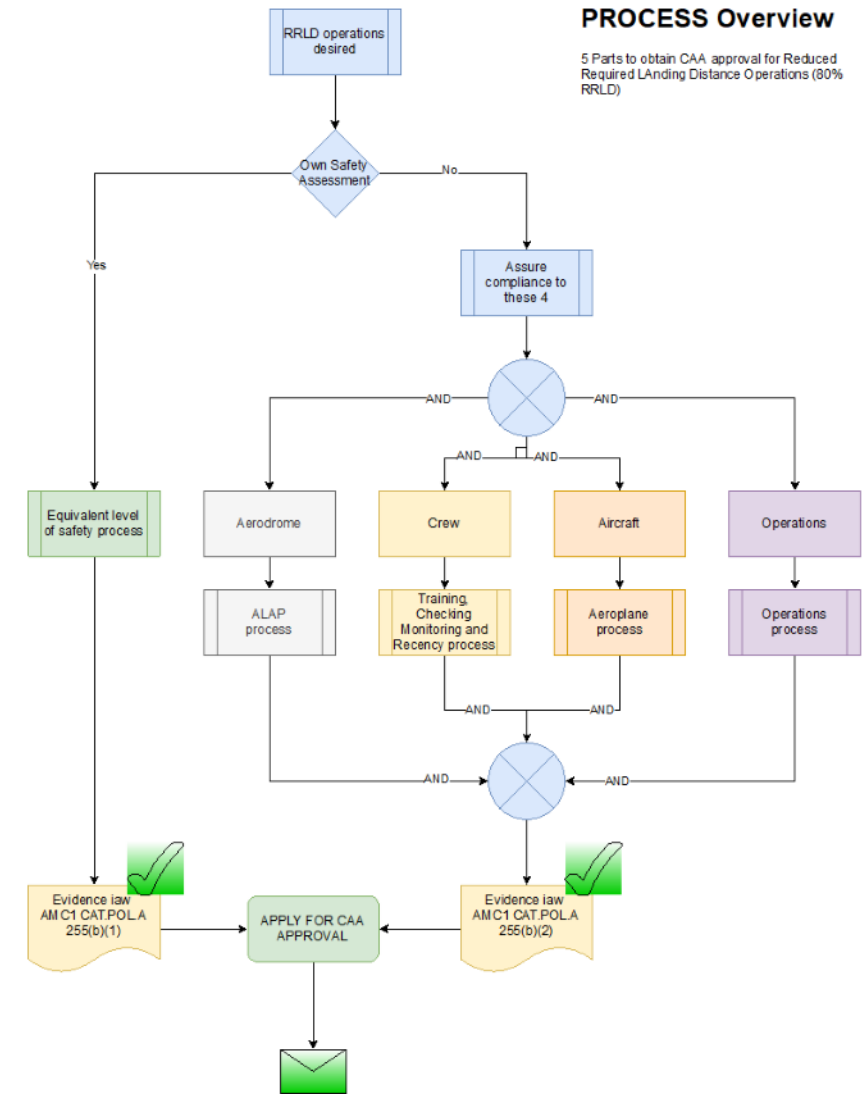
RRLD application & compliance process

PROCESS

1. Need to DEMONSTRATE an equivalent level of safety to CAT.POL.A 230 (60%)
2. Two methods:
 - Do your own risk assessment –or–
 - Provide compliance to a set of EASA requirements.
3. Get 80% approval from your CAA/NAA.

AVOID

1. Incorrect, Incomplete or unsatisfactory application by operator
2. Correct, complete application denied by CAA/NAA
3. Time, effort and money spent at application >> 80% advantages.



RRLD application

Align application with approval processes

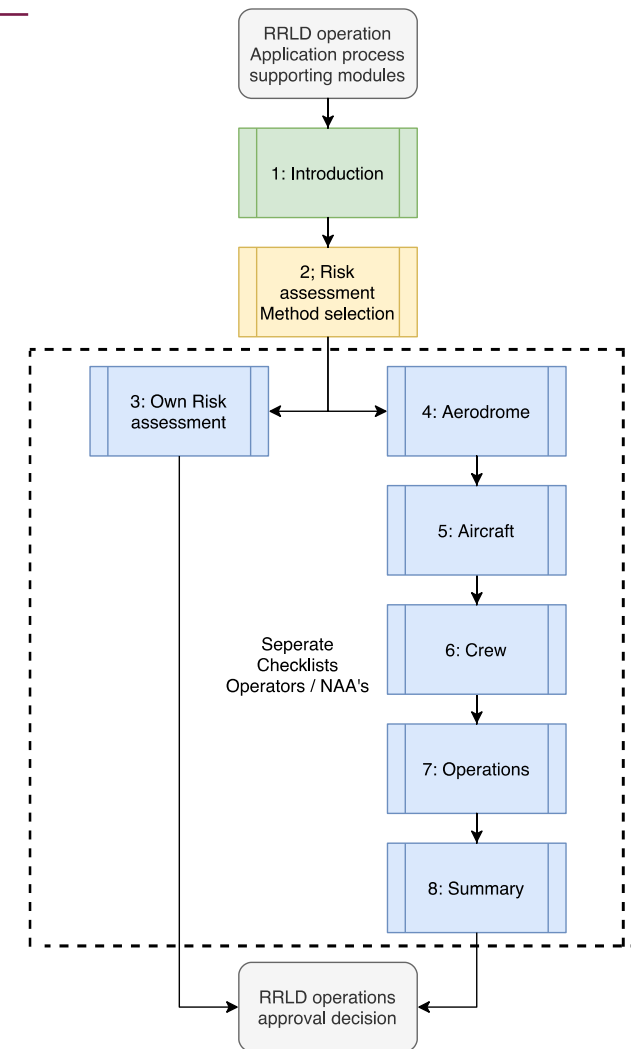
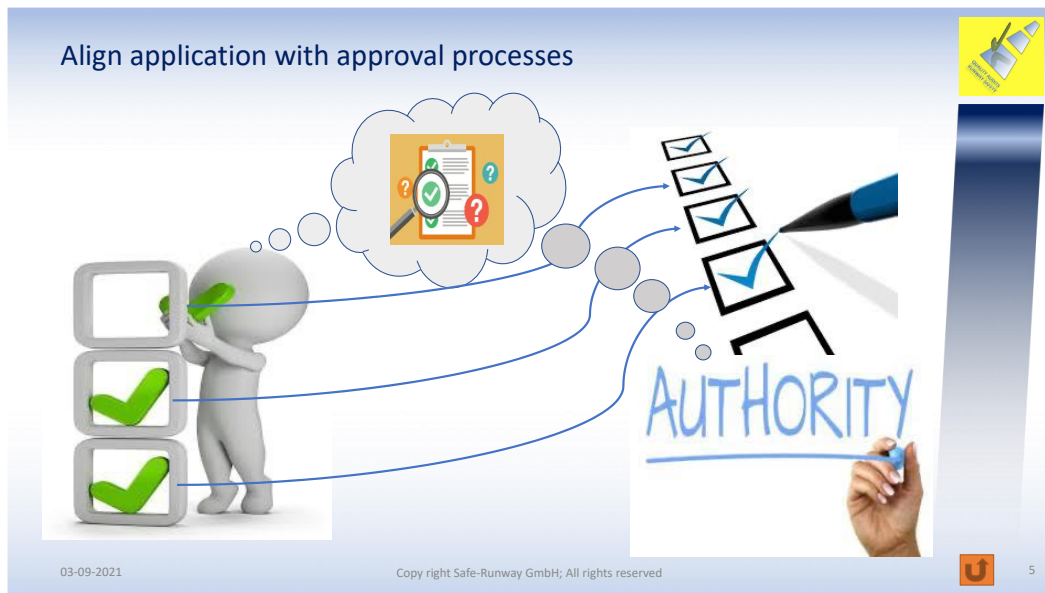
03-09-2021

Copy right Safe-Runway GmbH; All rights reserved

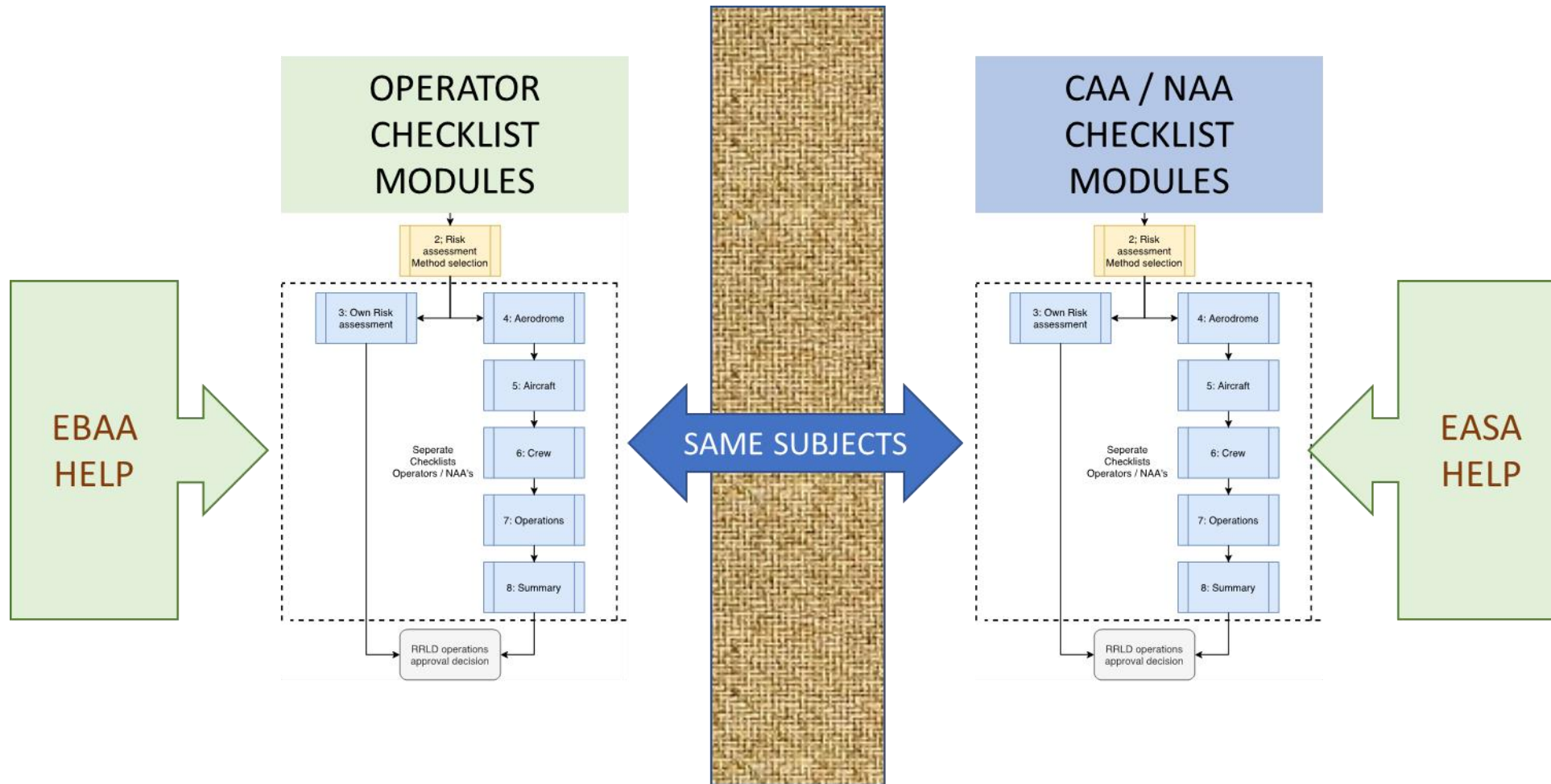
5

RRLD application Checklist

- Interactive checklist with modules
- To-the-point
- Focus only on RRLD compliance
- Time efficient
- Easy and user friendly



RRLD application checklist: Separated & Aligned



Flow process for operator RRLD application

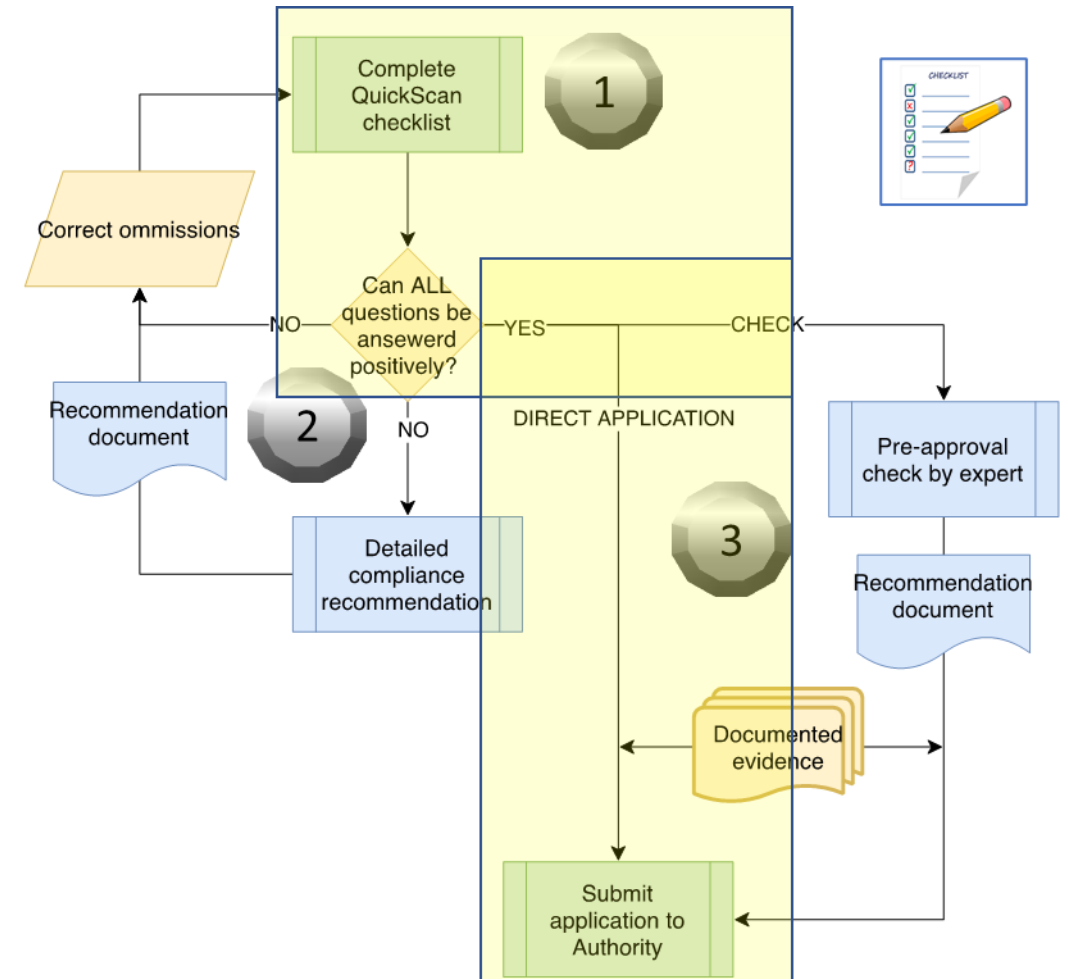
Step 1: Complete the operator [QuickScan checklist](#).

Step 2: If one or more question have not been answered positive (or unclear): Choose:

- Correct the omission by yourself and goto step 3 –or–
- Request a detailed [compliance recommendation](#) on the topic(s) at hand. Correct the omission and proceed to step 3

Step 3: When All question have been answered positively AND documented evidence is provided to support compliance: Choose:

- Submit your application directly to your NAA/ CAA –or–
- Request a [pre-approval check](#) and then submit your application



Flow process for operator RRLD application

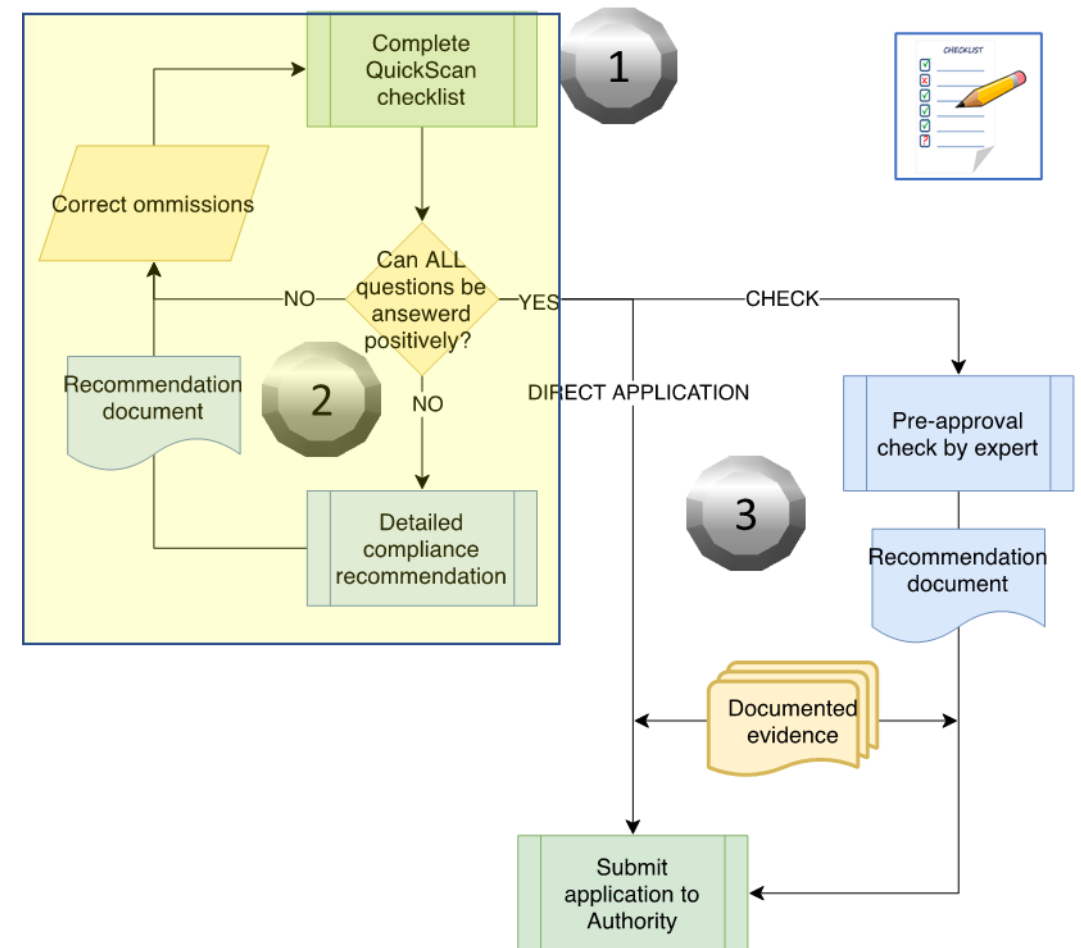
Step 1: Complete the operator QuickScan checklist.

Step 2: If one or more question have not been answered positive (or unclear): Choose:

- Correct the omission by yourself and goto step 3 –or–
- Request a detailed compliance recommendation on the topic(s) at hand. Correct the omission and proceed to step 3

Step 3: When All question have been answered positively AND documented evidence is provided to support compliance: Choose:

- Submit your application directly to your NAA/ CAA –or–
- Request a pre-approval check and then submit your application



Flow process for operator RRLD application

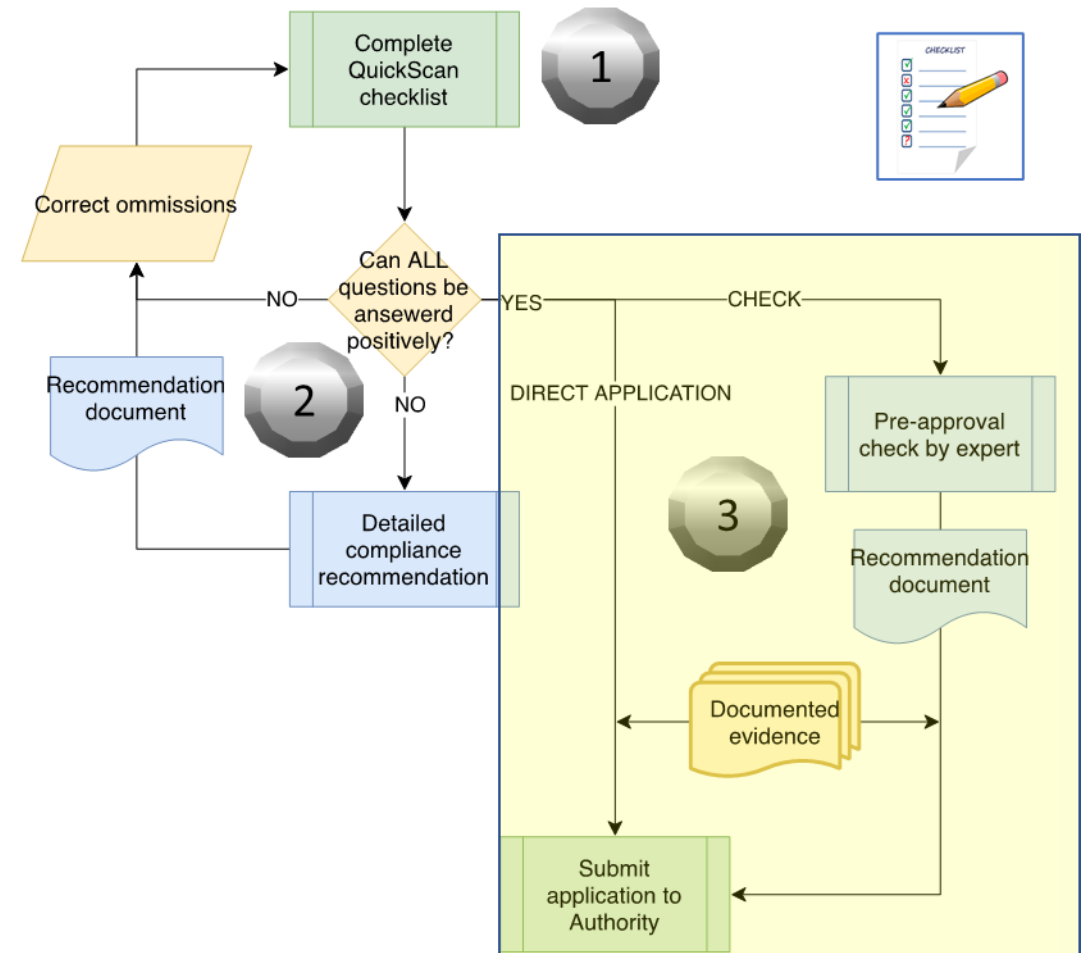
Step 1: Complete the operator QuickScan checklist.

Step 2: If one or more question have not been answered positive (or unclear): Choose:

- Correct the omission by yourself and goto step 3 –or–
- Request a detailed compliance recommendation on the topic(s) at hand. Correct the omission and proceed to step 3

Step 3: When All question have been answered positively AND documented evidence is provided to support compliance: Choose:

- Submit your application directly to your NAA/ CAA –or–
- Request a pre-approval check and then submit your application



RRLD Flightplanning



Crew and dispatch RRLD checklist

- RRLD Checklist for daily use for available flight crews.
 - Time saving, user-friendly and complete (26 items)
 - To be used RRLD flightplanning.
 - Unlimited use within your organization.
 - ALAP, OPS, Crew & Aircraft RRLD subjects
- Usage demonstrates operators compliance.
- Info@safe-runway.com Tel: +31 6 125 90 997

Safe-Runway GmbH

Route de Nendaz 438
Besse Nendaz, Valais CH 1996
Mobilier: 0041 (0) 125 90997
E-mail: info@safe-runway.com
Website: <https://www.safe-runway.com>



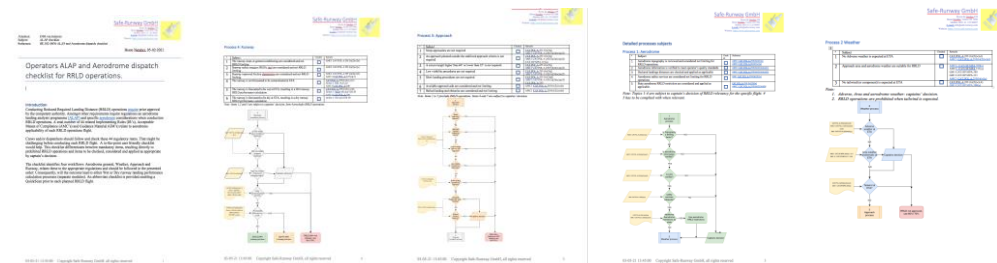
Abbreviated RRLD ALAP checklist

RRLD 80% operations: AERODROME and ALAP checklist		
#	Subject	Decision
Aerodrome general		
1	Aerodrome topography is reviewed and considered not limiting for RRLD operations.	Captain
2	Aerodrome information is verified to meet operator's quality standards	Captain
3	Declared landing distances (LDA) are checked and applied as applicable	Captain
4	Aerodrome safety services are considered and not limiting to RRLD operations	Captain
5	State aerodrome RRLD restriction are considered and applied as applicable.	Mandated
Weather		
6	No Adverse weather is expected at ETA (info adverse).	Mandated
7	Approach area and aerodrome weather are suitable for RRLD	Captain
8	No tailwind (or component) is expected at ETA	Mandated
Approach		
9	Steep approaches are not required	Mandated
10	An approach planned outside the stabilized approach criteria is not required	Mandated
11	A screen height higher than 60' or lower than 35' is not required	Mandated
12	Low visibility procedures are not required	Mandated
13	Short landing procedures are not required	Mandated
14	Available approach aids are considered and not limiting	Captain
15	Balked landing and obstacles are considered and not limiting	Captain
Runway		
16	The runway slope or general conditioning are considered and not RRLD limiting	Captain
17	Runway safety margins (RESA, etc.) are considered and not RRLD limiting	Captain
18	Runway improved friction characteristics are considered and not RRLD limiting	Captain
19	The runway is not forecasted to be contaminated at ETA	Mandated
20	The runway is forecasted to be wet at ETA, resulting in a Wet runway RRLD performance calculation	WET
21	The runway is forecasted to be dry at ETA, resulting in a dry runway RRLD performance calculation	DRY

[Click for details](#)

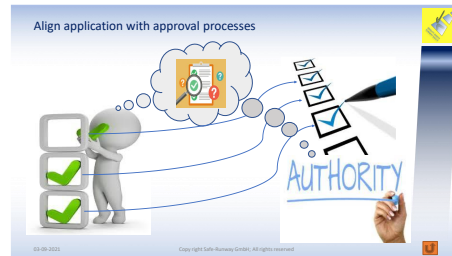
03-05-21 13:45:00 Copyright Safe-Runway GmbH, all rights reserved

2



Summary

- RRLD
 - More destinations
 - More payload
 - More safety
 - More happy customers
- APPLICATION
 - Prior approval required
 - RRLD application complicated
 - Application checklist
 - Application process
- DAILY USE
 - Compliance
 - Crew RRLD checklist includes all items



HELP AVAILABLE
Contact EBAA